



BUCKINGHAM
BUCK
1896



For over 120 years, Buckingham Manufacturing has been the world's leading and most trusted manufacturer of equipment and tools for major electric utilities, telecommunications companies, wireless and cable providers, and arborists. Our

customers work both above and below ground and we pride ourselves in manufacturing the highest quality and most innovative products on the market.

BUCK TOUGH

Knowing the dangers of these industries, we make our products Buck Tough. They are designed for rough use and no product is made without thorough

testing and inspection. This includes the raw materials, inprocess manufacturing and the finished product.

BUCK TESTED

When multiple standards can be applied to a product, Buckingham uses the most stringent standard for compliance. And to make sure we are up to date on standards, we are active and voting members of ANSI, ASTM and CSA. Buckingham is committed to develop new products for our

customers that are top quality and safe. We will continue to listen to our customers to improve existing products and develop new. Our products will be produced with the utmost attention to quality and safety providing our customers assurance of being Buck Tough and Buck Tested.

PRODUCT APPLICATION

To help you use this catalog, most products are accompanied by a symbol that indicates whether

the product is intended for fall arrest, work positioning, suspension, retrieval, or fall restraint.



FALL ARREST SYSTEM
A product specifically designed to arrest a fall from an elevated position.



RETRIEVAL SYSTEM
Equipment used to evacuate a person from an area in an upright position. Not intended to arrest a fall unless also equipped for fall arrest.



WORK POSITIONING SYSTEM & WOOD POLE FALL RESTRICTION
Device allows climber to remain at the work position with hands free. It performs a fall restriction function if climber loses contact between gaffs and pole.



SUSPENSION SYSTEM
Equipment designed to suspend or lower a person to a work site. Not intended to arrest a fall.



FALL RESTRAINT SYSTEM
Equipment designed to prevent the worker from reaching an area where a free fall could occur.

MEMBERSHIP IN PROFESSIONAL TRADE ASSOCIATIONS & COMMUNITY INVOLVEMENT

- American National Standards Institute (ANSI)
- American Society for Testing and Materials (ASTM)
- American Society of Safety Engineers (ASSE)
- Greater Binghamton Chamber of Commerce
- International Safety Equipment Association (ISEA)
- International Society of Arboriculture (ISA)
- National Association of Manufacturers (NAM)
- National Association of Tower Erectors (NATE)
- Northeast Public Power Association
- Tree Care Industry Association (TCIA)
- United Way
- Canadian Standards Association (CSA)



QUALITY

Buckingham's definition of quality is giving the customer exactly what they order and expect. In support of our definition of quality, Buckingham and its employees are committed to:

- Manufacturing products that are high-quality, reliable, and with ZERO defects.
- Listening to and working closely with our customers to improve upon quality, service, and product development.
- On time delivery
- Consistently increasing performance across every aspect of our company.
- Continuously challenging ourselves to improve the quality management system to guarantee product quality and eliminate defects through the review of a series of objectives and results.

Commitment to this policy starts at the top – starting with our President and General Manager – and is embodied across every facet of Buckingham and its employees.

SAFETY STANDARD & REGULATIONS

OSHA:

Title 29, CFR Chapter XVII, Parts 1910 and 1926. The Occupational Safety and Health Administration (OSHA) has spelled out certain requirements for equipment used in the construction (including power line construction) and telecommunications industries.

- Part 1910.67 (c) (2) (iii); (c) (2) (v); (c) (2) (x) apply specifically to extensible and articulation boom platforms — belting requirements.
- Part 1910.268 (g) applies specifically to telecommunications and personal climbing equipment for use in that industry.
- Part 1910.269 (g) applies to electric power generation, transmission and distribution, Personal Protective Equipment.
- Part 1926.104 applies to safety belts, lifelines and lanyards used primarily in the construction industry.
- Part 1926.453 (b) (2) (iii); (b) (2) (v); (b) (2) (x) apply specifically to aerial lift - belting requirements.
- Part 1926.502 fall protection system criteria and practices.
- Part 1926.954 Electric Power Transmission and Distribution - Personal Protective Equipment.

ASTM F887

The American Society for Testing and Materials (ASTM).

ASTM F887, "Standard Specifications for Personal Climbing Equipment."

- Pole and Tree Climbers and Accessories
- Body Belts
- Positioning Devices (Positioning Straps, Adjustable Positioning Lanyards, Nonadjustable Positioning Lanyards)
- Wood Pole Fall Restriction Devices (WPFRD)
- Arborist Saddles
- Electric Arc Performance Qualification Testing (Harnesses, Energy Absorbing Lanyards)

ANSI Z359

The American National Standards Institute (ANSI) in Z359 establishes requirements for the performance, design, marking, qualification, instruction, training, use, maintenance and removal from service of connectors, full body harnesses, lanyards, energy absorbers, anchorage connectors, fall arresters, vertical lifelines, and self-retracting lanyards comprising personal fall arrest systems. The ANSI Z359 Fall Protection Code currently includes nine standards:

- Z359.0 "Definitions and Nomenclature Used for Fall Protection and Fall Arrest"
- Z359.2 "Minimum Requirements for a Comprehensive Managed Fall Protection Program"
- Z359.3 "Safety Requirements for Positioning and Travel Restraint Systems"
- Z359.4 "Safety Requirements for Assisted-Rescue and Self-Rescue Systems, Subsystems and Components"
- Z359.6 "Specification and Design Requirements for Active Fall Protection Systems"
- Z359.7 "Qualification & Verification Testing of Fall Protection Products"
- Z359.11 "Safety Requirements for Full Body Harnesses"
- Z359.12 "Connecting Components for Personal Fall Arrest Systems"
- Z359.13 "Personal Energy Absorbers and Energy Absorbing Lanyards"
- Z359.14 "Safety Requirements for Self-Retracting Devices for Personal Fall Arrest & Rescue Systems"
- Z359.15 "Requirements for Single Anchor Lifelines and Fall Arresters for Personal Fall Arrest Systems"
- Z359.16 "Safety Requirements for Ladder Fall Arrest Systems"

CSA Z259

CSA International is a provider of third party product testing and certification services for compliance to national and international standards. The CSA Certification mark, generally required by the Canadian market, indicates that a product has been evaluated by their process (examination, testing and follow-up inspection) and complies to the requirements of the applicable standard for which the product is labeled.

- CSA-Z259.1 - Body belts and saddles for work positioning and travel restraint
- CSA-Z259.2.2 - Self retracting devices for personal fall-arrest system
- CSA-Z259 - Full Body Harness
- CSA-Z259 (R2015) - Energy Absorbers and Lanyards
- CSA-Z259.12 - Connecting Components For (PFAS)
- CSA-Z259.14 - Fall Restrict Equipment For Wood Pole Climbing.

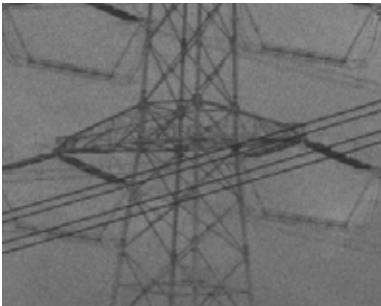
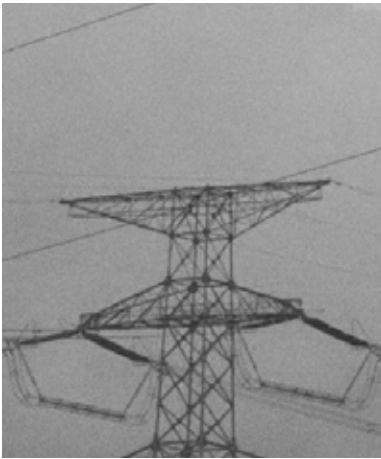
ANSI A10.32

- A10.32- "Personal Fall Protection Used in Construction & Demolition Operations"

ANSI Z133

- Z133 "Safety Requirements for Arboricultural Operations"





BUCKINGHAM
BUCK
1896

Buckingham MFG
1-11 Travis Avenue
Binghamton, NY 13904, USA

+1 800 937 2825

buckinghammfg.com

sales@buckinghammfg.com

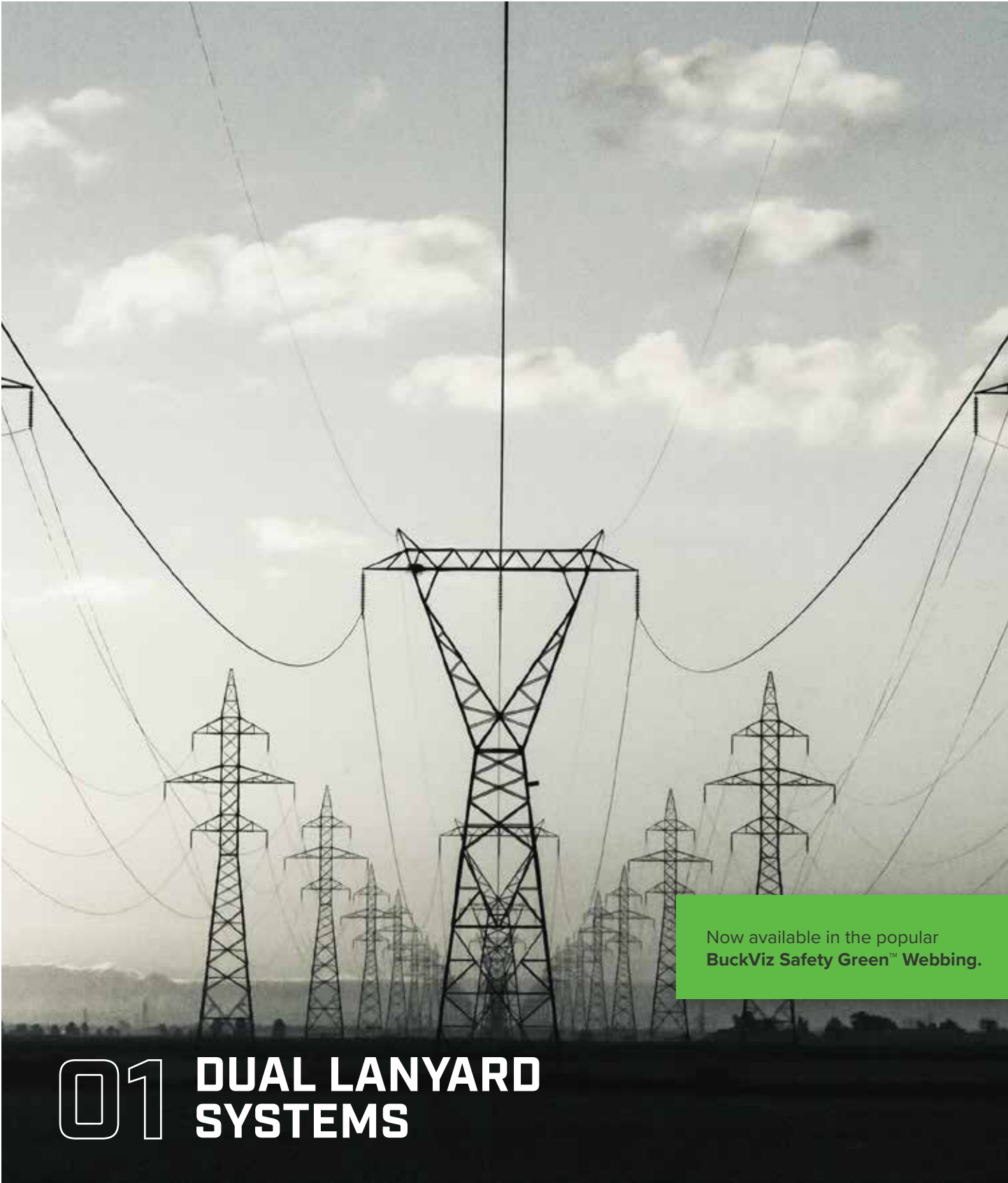
facebook.com/buckinghammfg
instagram.com/buckingham_mfg
twitter.com/buckingham_mfg
youtube.com/buckmfg
google.com/+buckinghammfg



CONTENTS

06	DUAL LANYARD SYSTEMS
10	BUCKHOOK™ SYSTEM
12	LIFELINE SYSTEMS
13	TOWER HARNESSSES
18	POSITIONING LANYARDS & CONNECTORS
22	PERSONAL FALL LIMITERS & SELF-RETRACTING LIFELINES
24	HORIZONTAL LIFELINES & RESCUE SYSTEMS
26	OX BLOCK™ & ACCESSORIES
30	EQUIPMENT BAGS & ROPE BAGS





Now available in the popular
BuckViz Safety Green™ Webbing.

01 DUAL LANYARD SYSTEMS

BUCK COMBOYARD™



Meets ASTM F887 Electric Arc Performance Requirements.



FALL ARREST

The ComboYard™ combines the best features of multiple common lanyards, accommodating any size angle iron. Features a 5' dual tie-back lanyard with wear guard and a 12' fall (Force Factor II) ANSI rated shock absorber and rescue loops for quick,

easy and safe rescue. Includes Tie Back Snaps with 5,000 lb. rated gate, two ANSI 3,600 lb. gate Big BuckSnaps™ that attach around angle iron up to 4". Weighs 9.2 lbs. Meets OSHA 1926.954, ANSI Z359.13 and ASTM F887 Arc Flash Requirements.



Big Buck Snaps™
Fits angle iron up to 4".

Red Rescue Loops

BuckViz™
ComboYard™
5V67FQ1

HOW TO

1. Attach end of the dual lanyard to the anchor step bolt/flange with the tie back snaps (Figure A), or existing lattice by either the Big BuckSnaps™ (Figure B) or by wrapping the lanyard leg around lattice and then attaching the tie back snaps back to lanyard (Figure C). Step up until attachment point is at waist level.
2. Take the other end of the dual lanyard, connecting to the anchor above
3. Once secure, disconnect the connection at the waist and ascend until the connection above is at the waist. Repeat the process until desired height is reached.

Figure A



Tie Back Snaps can be used to snap over step bolts.
Note: Step Bolts must have a large enough head to prevent snap from sliding off.

Figure B



Tie Back Snaps can attach to ring of ANSI rated Big BuckSnaps, hooking directly over tower lattice.
Note: ComboYard™ becomes 6' dual shock absorbing lanyard with Big BuckSnaps™ added.

Figure C



Tie Back Snaps can be attached back to the lanyard. This allows climber to continue to use the lanyard in the event of larger attachment points.





**BuckViz™ Versa-Yard™
5U67DQ1**

Lightweight aluminum hardware option. Only weighs 2lbs!

A versatile lanyard featuring all aluminum alloy hardware, reducing the weight to only 2.4 lbs. Elastic core reduces the length of each leg when not in use and has rescue loops for quick and safe rescue. The 12' fall (Force Factor II) energy absorbing pack keeps the impact force to the allowable parameters

when anchored at foot level. Weighs 2 lbs. 4oz.

Meets/Exceeds OSHA 1926.954, ANSI Z359.13, ASTM F887 and Electric Arc Performance Requirements.

The triple action, auto-locking captive eye carabiners can be connected to:



**Big Buck Snap™
30342**

See page 21 for specs.



**Aluminum Pelican Snap
1720**

See page 21 for specs.



**Step Bolt Snap
1719**

3600lb rated gate. Meets ANSI Z359.12.



**BuckViz™ Stepclimb™
Lanyard
5+R67D15RD3S1**

Ideal for the user climbing on step bolts. 3lbs.

Provides a safe, easy way to ascend and descend a tower using the existing step bolts. 5' overall length. Overall weight is only 3 lbs. Aluminum snap hook connects to harness dorsal attachment.

Ergonomically designed aluminum snaps attach onto 5/8" or 3/4" diameter step bolts. Weighs 3lbs.

Meets OSHA 1926.954, ANSI Z359.13 and ASTM F887 Arc Flash Requirements.

The triple action, auto-locking captive eye carabiners can be connected to:



**Big Buck Snap™
30342**

See page 21 for specs.



**Aluminum Pelican Snap
1720**

See page 21 for specs.



BuckViz™ Lightweight "Y" Lanyard
5+R67D16RD1S1

All aluminum hardware. Great for climbers needing to attach to lattice. 5lbs.

The Lightweight "Y" Lanyard features all aluminum alloy hardware, reducing the weight to only 5lbs. Aluminum Pelican Hooks have 2 ½" gate opening to attach over lattice. Elastic core reduces the length of each leg when not in use to reduce trip hazards, and

has rescue loops for quick, easy rescue. Weighs 5lbs.

Meets/Exceeds OSHA 1926.954, ANSI Z359, ASTM F887, and OSHA Electric Arc Performance Requirements.



BuckViz™ BuckStop™ Dual Lanyard
5V67D16RD+HS1

Ideal for use on towers with angle iron up to 4".

Features two **30342** Big BuckSnaps™. Attaches over angle iron up to 4". Elastic core reduces the length of each leg when not in use to reduce trip hazards. Weighs 6.5 lbs.

*Meets OSHA 1926.954, ANSI Z359.13 and ASTM F887 Arc Flash Requirements. For web loop dorsal attachment, order Model **546716RD+HS1**.*



Dual Tough Rope™ Energy Absorbing Lanyard w/Bucksorber2™
400000X12Q1

A dual lanyard fall-arrest system that allows the user to be continually attached to the structure starting from the ground, all the way to the top, and back down to the ground. Keeping you safe every step of the way. Constructed from Buckingham's patented Tough Rope™, is equipped with Bucksorber2™ energy absorbing pack, and features

two locking ladder snaps for attachment. Buckingham's patented Tough Rope™ is constructed with an energy-absorbing nylon core, red braided polyester inner core cover (red wear indicator) and an abrasion and heat resistant Technora outer jacket that eliminates the need for a wear guard.

Features:

- Bucksorber2™
- One 1718 aluminum locking snap hook
- Two 1720 aluminum locking ladder snap
- Tough Tope™ lanyard legs measuring 6' in length.
- Petzl Open Ring.





02 BUCKHOOK™ SYSTEM

BUCKHOOK™ CLIMBING KIT



INCLUDES:

- **50371U** BuckHook™
- **45400R2-18** 18" Utility Bag
- **39S2Q2-16** 7/16" - 1/2" Semi Static Kernmantle 16' lifeline
- **5004L3** Mobile Fall Arrestor
- **5005** Auto Lock Steel Carabiner w/360 Rated Gate Keeper



BuckHook™ Climbing Kit KIT9-18

TO ASCEND & DESCEND

The BuckHook™ system uses a shepherd's hook attached to a fiberglass pole to fit over steel lattice. User would attach a lifeline with a mobile fall arrester to the BuckHook™ and then attach the mobile fall arrester to oneself for fall protection.

1. Attach a short lifeline and mobile fall arrester to sternal attachment on harness. For connecting lanyards longer than 12" a shock pack should be attached to the dorsal attachment.
2. Using the extension pole with BuckHook™ and 7/16" or 1/2" non-stretch rope attached, lift and secure hook onto lattice so that the end of the pole is below foot level.
3. Once in place, climb up near BuckHook™.
4. Secure secondary positioning lanyard around tower leg. Once secure, move BuckHook™ to next highest point making sure end of the pole is below user's feet.
5. Once at the work site user should secure an anchor sling to a suitable anchorage point. The primary vertical lifeline can then be attached to the anchor sling.
6. Once the lifeline is installed, other climbers can connect their harness to a mobile fall arrester and ascend and descend the lifeline.





**Lifeline
39S2Q2-16**

7/16" Kernmantle 16' lifeline. Stitched eye with steel thimble at one end. Tight eye with weighted bag on the other end. Use with Mobile Fall Arrestor Model **5004L3** or **5004L4** mobile fall arrestors.



**BuckHook™
50371U**

Offers fall protection from ground to elevated heights back to ground. Used in conjunction with: Model **39S2Q2-16** lifeline, models **5004L3/5004L4** mobile fall arrestors, or retractable lifeline. The universal head connects to a standard fiberglass stick.



**BuckSorber™ 2
400000X12**



The BuckSorber™ 2 is compatible with mobile fall arrest devices and designed to keep peak impact forces below 1350lbs during a 2.5' max fall. The BuckSorber™ 2 has a max user rating of 350 lbs. or two person rating of up to 620 lbs. when used for rescue.

Rubber lined eyes keep BuckSorber2™ properly oriented on carabiners.

The BuckSorber2™ meets/exceeds ANSI Z359.13 requirements, ASTM F887, OSHA 1926.502 & 1926.954.

- Arc Flash tested to 40cal/cm², manufactured with Kevlar Webbing
- Cover can be opened for easy inspection
- Specially designed eyes on the BuckSorber™ 2 keeps the carabiners properly oriented to prevent cross loading the gate
- Can be ordered already attached to Mobile Fall Arrestor **5004L4** (see below) or connected between anchor and lifeline



Designed to facilitate manipulations during rope ascents. Used in conjunction with a BuckSorber™2 to work at a distance from the rope. Connection arm makes system loss-resistant when passing intermediate anchors. The Mobile

Fall Arrestor locks on rope and stops user. Integrated locking function allows user to immobilize device to reduce length of fall. Moves freely along rope without any manual intervention. *To be used with the BuckSorber™ 2.*

**Mobile Fall Arrestor
Lock w/BuckSorber™2
5004L4**



**BuckSorber1™ Kit
KIT39Q1**

The BuckSorber1™ Kit was designed specifically to facilitate manipulations during rope ascents. The kit is equipped with a Petzl ASAP® Lock that is used in conjunction with a BuckSorber1™ that allows the user to work at a distance from the rope. The connection arm between the ASAP® Lock and BuckSorber1™ makes the system loss-resistant when passing intermediate anchors. The BuckSorber1™ Kit features a **5555S4** carabiner that serves as a connection point to your harness's sternal connection point. The integrated locking function allows the user to immobilize the device to reduce the length of fall. In the event of a slip or fall the ASAP® Lock will lock on the rope and stops the user instantly. Moves freely along any rope without any manual intervention.





TOWER VERTICAL LIFELINE KIT



This Vertical Lifeline Kit contains all the components necessary to safely allow climbers vertical access to a structure while keeping them 100% fall protected. The small diameter rope allows for more compact storage and weight reduction.



Temporary Vertical Lifeline Kit
109-300

INCLUDES:

- 300' of 7/16" abrasion resistant static rope with stitched eyes and metal thimbles on each end (**39S2Q1-300**)
- 2 easy to install mobile fall arrest devices, move smoothly along the rope and will arrest the user in the event of a fall (**5004L4**)
- Lifeline anchor strap (**3902-6**) with ANSI rated carabiner (**5005**)
- 6 Redirect slings (**3905E-24**) & carabiners (**5005T**) allow the user to position the lifeline so it conforms to the shape of the structure.
- Storage Bag marked "Vertical Lifeline" for easy identification (**4569PQ5-150**)

AVAILABLE LENGTHS

LENGTH	150'	300'
MODEL NO.	109-150	109-300

BUCKLINK™ SLING

Each loop is rated to 5,000 lbs.



Whether it's using the BuckLink™ Sling to rig an OX BLOCK™ or pulling wire and holding it up on a cross arm, this product is the ultimate daisy chain style anchor sling that should be found on every truck across America due to its endless uses. The BuckLink™ is made of lightweight Spectra material and each loop is rated to 5,000 lbs. With 16 loops, users can adjust the BuckLink™ sling to form a rated anchor of any size and help tackle any situation or need they encounter while in the field.

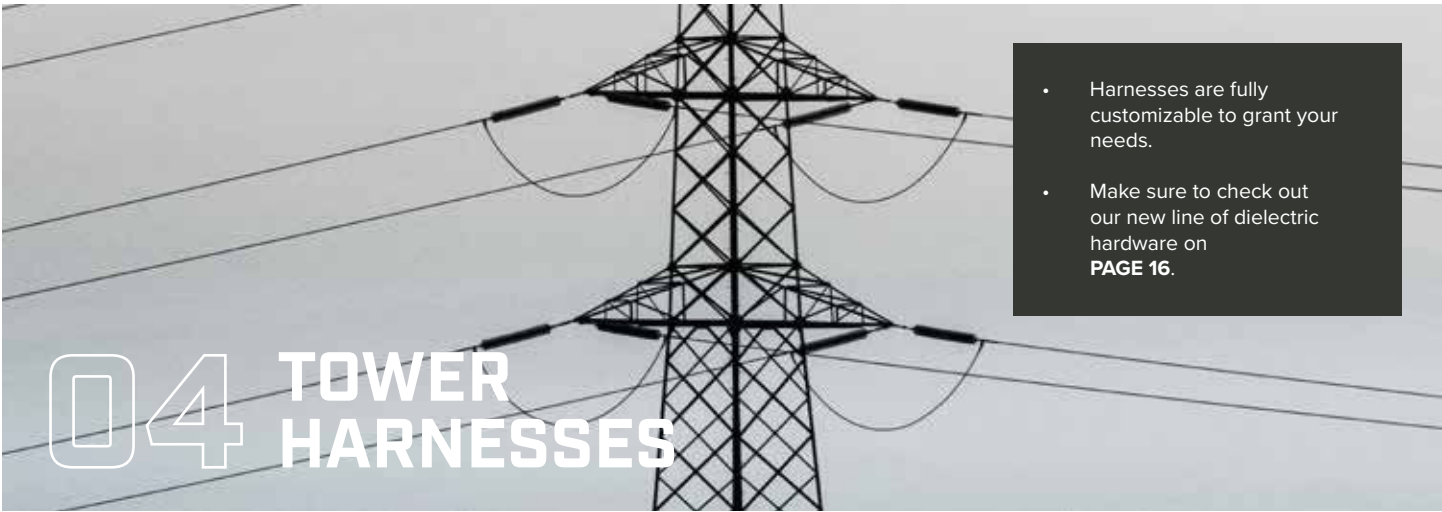


BuckLink™ Sling
3903S-6



BuckLink™ Sling Without Carabiner
3903SQ2-6





- Harnesses are fully customizable to grant your needs.
- Make sure to check out our new line of dielectric hardware on **PAGE 16**.

04 TOWER HARNESSSES



BuckArticulator™ Dielectric "Y" Style Harness 69B9DQ6

The BuckArticulator™ articulates in three places making it ideal for anywhere that requires the user to bend, reach, twist, and climb at heights. Perfect for fall arrest, work positioning and rescue.

This harness can be used by itself or the user can easily attach a lineman's body belt. The BuckArticulator™ harness floats freely through the waist straps, while the body belt stays in

Perfect for someone with their own belt and looking for maximum mobility.

position allowing for freedom of movement. This BuckArticulator™ has a 5,000 lb. rated D-Ring at the sternum (better for rescue) and a 5,000 lb. rated nylon loop dorsal attachment that can be used for fall arrest or rescue. Color coded leg straps with quick connect buckles makes donning easy. Leg straps with aluminum quick connect buckles help reduce weight. *Meets ANSI Z359.11 and ASTM-F887 Arc Flash Requirements.*



Dielectric hardware eliminates the potential of static electricity being transferred through steel hardware if working around an energized conductor in wet or damp conditions. Also, Dielectric hardware has a better resistance to corrosion in extreme conditions (hot or salty air environments).

TOWER CLIMBING KITS

These Tower Climbing Kits offer top-notch comfort, durability, and safety by combining many of our top-of-the-line tower climbing & accessory products.



Premium Tower Climbing Kit KIT146

- Kit Includes:**
- One **68K966K6** BuckTech™ FR Tower Harness
 - One **47333G9L3R5SW1** Lockable Buck Big Mouth Bag
 - One **92CM8-8** Buck LeverJust™ w/Tough Rope™
 - One **5004LQ5** Mobile Fall Arrestor w/BuckSorber 2™
 - One **5555S4** Aluminum Triple Action Carabiner
 - Two **9442C13** Tough Rope™ Sling



Deluxe Tower Climbing Kit KIT146Q1

- Kit Includes:**
- One **68K966K6** BuckTech™ FR Tower Harness
 - One **47333G9L3R5SW1** Lockable Buck Big Mouth Bag
 - One **92CM8-8** Buck LeverJust™ w/Tough Rope™
 - One **5004L4** Mobile Fall Arrestor w/BuckSorber 2™
 - Two **39021J12-2** Lightweight Suspension Sling
 - Two **5555S4** Aluminum Triple Action Carabiner
 - Two **9442C13** Tough Rope™ Sling
 - Three **5005** Steel Auto Lock Carabiner
 - One **3032L** Locking Spreader Snap

BUCK OHM™ TRUEFIT™

DIELECTRIC UNIVERSAL FIT HARNESSES

The unique value of Buckingham's new BuckOhm™ TrueFit™ Harnesses, is that they truly are a universal harness. No one else on the market can say that. Competitors say they have a universal harness but its wildly out of adjustment, doesn't fit properly, and is unsafe to the end user. At best, our competitors can say "one size fits many," but Buckingham's unique design allows for these TrueFit™ harnesses to be the ONLY universal harness on the market. One size will fit anyone from a small up to a 3XL! Whether your 5' 1" and 130 lbs. or 6' 6" and 325 lbs., this harness will fit you. We haven't seen anyone that it won't fit, but we also haven't taken it to the carnival yet! Unique adjustment features both on the front and back of the harness make this a perfect choice if you are looking for a universal harness.



BuckOhm™ TrueFit™ w/Pigtail U68L7NQ1

Features include:

- 9KV rated Dielectric hardware.
- Dielectric quick connect chest buckle.
- 18" Dorsal Pigtail w/9KV Dielectric D-Ring
- Lightweight back pad.
- Dielectric quick connect leg strap buckles for easy donning.
- Frontal rescue loops
- Dual trauma straps.
- Harness comes w/energy absorbing lanyard breakaway attachment (ensure ANSI compliance if removing back pad) & leg strap retainers to use if needed.
- Also available in BuckViz Safety Green; use Model **U68L7NQ4**



BuckOhm™ TrueFit™ w/Dielectric D-Ring U68L7NQ2

Features include:

- 9KV rated Dielectric hardware.
- Dielectric quick connect chest buckle.
- 9KV rated Dielectric dorsal D-Ring.
- Lightweight back pad.
- Dielectric quick connect leg strap buckles for easy donning.
- Frontal rescue loops
- Dual trauma straps.
- Harness comes w/energy absorbing lanyard breakaway attachment (ensure ANSI compliance if removing back pad) & leg strap retainers to use if needed
- Also available in BuckViz Safety Green; use Model **U68L7NQ5**



BuckOhm™ TrueFit™ w/Web Loop U68L7NQ3

Features include:

- 9KV rated Dielectric hardware.
- Dielectric quick connect chest buckle.
- Web loop dorsal attachment.
- Lightweight back pad.
- Dielectric quick connect leg strap buckles for easy donning.
- Frontal rescue loops
- Dual trauma straps.
- Harness comes w/energy absorbing lanyard breakaway attachment (ensure ANSI compliance if removing back pad) & leg strap retainers to use if needed.
- Also available in BuckViz Safety Green; use Model **U68L7NQ6**



BUCKTECH™ HARNESSES

Introducing the newly redesigned BuckTech™. Now featuring a redesigned seat attachment, providing more comfort and less pressure on the hips when suspending. With the seat, the BuckTech™ is perfect for flying and suspension. Remove the seat and you gain the mobility for the jobs that require a lot of movement. The BuckTech™ is taking tower safety to the next level. The BuckTech's™ removable seat, lightweight aluminum D-Rings, quick connect buckles and much more make this harness one of the most versatile harnesses on the market.

Features Include:

- Now features a redesigned seat attachment that provides more comfort and less pressure in the hips when suspending. With the seat, the BuckTech™ is perfect for flying/helicopter work and suspension.
- Remove the seat and you gain the mobility for the jobs that require a lot of movement.
- Low profile sternal D-Ring for use w/mobile fall arrestors & rope grabs.
- Chest strap adjustment buckles allow user to properly position sternal D-Ring to prevent sliding during fall.
- The seat attachment is now lower on the belt portion, making the harness more comfortable and easier to change out.
- Different color D-Rings allow to easily differentiate between the four.
- Aluminum hip & seat D-Rings reduce overall weight for added comfort.
- Adjustable shoulder straps allow for proper position of dorsal D-Ring.
- Quick connect chest and leg straps make donning a breeze.
- The Belt strap can easily be removed to add tool or bolt bags.
- The dual breakaway loops at waist level provide storage for lanyard hooks when not in use.
- Storage for gear and tools is also located on the rear gear loops.
- Padded shoulder straps & lumbar support provided for all day comfort.
- Padded broad shoulder strap to more evenly distribute weight of gear.
- Gear loops are rated to 100 lbs.
- Full floating suspension D-Ring on web bridge eliminates use of a spreader snap and allows for more mobility when working off the floating D-Ring on bridge.
- Removable bridge for extra mobility.
- Fully padded 7" Drilex back pad.



Arc Tested BuckTech™ Tower Harness
68K966K6

Made from FR (FLASH Resistant) fabric meeting all ASTM-F887 Arc Flash Requirements.





**Adjustable 6-d Body Belt™ X-Style Harness Combo
66996Q7**

A sliding 'X' style, body belt/harness combo designed with comfort and convenience in mind. The body belt/harness combo features an ultra-soft, adjustable 6-D body belt™ that has the low-profile construction of a 2-D Body Belt, with the functionality of a 4-D stacked Body Belt, reducing surface area and weight overall!

Features include:

- Revolutionary patented multi-hole D-ring provides numerous points of connection for both your primary and secondary lanyard (s) allowing the user to climb, work, and transition in several different configurations.
- 2 ½" offset connection points.
- Center connection point provides the user with a larger area to connect and disconnect a secondary lanyard.
- Adjustable man-rated belt strap and adjustable work positioning D-piece that allows the user to customize the size and feel of the belt.
- Low profile construction of a 2-D Body Belt, with the functionality of a 4-D stacked Body Belt, reducing surface area and weight overall.
- Y2 adjustment buckles on D-rings & belt strap eliminate slippage during use.
- Features pouch tabs, accessory ring and snap, and a tape thong.
- Dorsal d-ring for lanyard attachment for fall protection / fall arrest.
- QC buckle chest and leg straps.
- Padded shoulder/back pad for added comfort.



**Access™
Tower Harness
61992**

Lightweight, fits like a glove, is compact and has functional features like frontal attachments and tool loops. Best for those spending time on their feet, the occasional repelling or suspension, and flying.

The Buck Access™ tower harness is perfect for a climber who is new to tower fall protection with its user friendly design and is good for light suspension work. This harness wears like a traditional line belt and features attachments similar to traditional line belts. We recommend the Access harness for those who are on their feet and moving around on structures and who may need to occasionally repel or suspend. Harness-body belt combination featuring five D-Rings (one at the dorsal, one at the sternum, one at the waist, and two for work positioning). 5,000 lb. rated loop at the waist. Arc flash rated shoulder pads, and

wide leg pads. Patented quick connect buckles for added comfort. Neck features a 'U' designed stitch pattern making the opening wider eliminating neck irritation. The adjustment buckles front and back adjust height to create a snug fit. Body belt features tool loops, accessory snap and rings. Quick connect leg straps for easy donning. Belt tightens using two friction buckles in front of the work positioning dees. Meets all applicable OSHA, ASTM and ANSI standards.

For 4 dees on the body belt, order **62992**.



**Access™ Tower Harness w/Arc Tested Gear Lops
61992Q14**

All the features of the Buck Access™ tower harness (61992), now modified with added features!

Features include:

- Strap keepers added behind work positioning D-rings to store excess waist straps.
- Semi-rigid leg pads.
- Second breakaway loop.
- Arc Flash Tested Black Technora Gear Loop
- Steel rings stitched to shoulder pads (non-breakaway / not for lanyard attachment).
- The Access™ is a 'Y' style harness.
- Designed for suspension work.
- Easy to Repel.
- Great for work that requires a lot movement around structures
- 2 Work Positioning D-Rings
- 2 Dorsal D-Rings
- 1 Sternum D-Ring
- 1 Waist D-Ring.





2-D TrueFit™ Belt

A patent-pending, fully adjustable, 2-D TrueFit™ belt that allows your dee size to be adjusted between sizes 20-30. This adjustable 2-D belt offers an adjustable dee piece/gut strap that allows the user to customize the size of the belt at any given moment.

Features:

- Lightweight, just 2.5 lbs.!
- Interlocking (1998C) or Quick Connect Buckles (1998CQ2) to retrofit the belt to a harness.



w/ Interlocking Buckles
1998C



w/ Quick Connect Buckles
1998CQ2

OUR LIGHTEST HARNESS EVER MADE!



**Featherweight Harness w/ Dielectric Buckles
68L98Q1**

- Buckingham's ACT (Anti Chafe Technology) Collar™ features folded, stitched, and leather lined shoulder straps to reduce neck chafing while working overhead, creating a much more comfortable day on the job.
- Lightweight – just 3.1 lbs.
- Torso adjustment features no cumbersome web tails.



**Featherweight Harness
6398JQ1**

- Buckingham's ACT (Anti Chafe Technology) Collar™ features folded, stitched, and leather lined shoulder straps to reduce neck chafing while working overhead, creating a much more comfortable day on the job.
- Lightweight – just 2.8 lbs.
- Features a hook and loop chest strap and aluminum quick connect leg strap buckles for quicker and easier donning.
- Torso adjustment features no cumbersome web tails.



**Gated Handline Carrier
2402G**

Buckingham's Gated Handline Carrier © is made of Polymer and includes a hole to easily secure it to the body belt with a bolt or zip tie (zip tie included). The carrier will straighten when approximately 25 pounds of pressure is applied and up to 35 pounds when the handline gate is closed, allowing the handline to pull free. Ideal when using the Ox Block® and related accessories.



**Heavy-Duty Gated Handline Carrier
2402GH**

Buckingham's Heavy-Duty Gated Handline Carrier © is a rigid handline carrier designed to breakaway when approximately 33 pounds of pressure is applied. With the gate locked, the breakaway strength increases by 10 lbs. Ideal for transmission linemen or when using the Ox Block® and related accessories.



**Magnet Pouch
M4**

The Magnet Pouch was designed to wrap onto 1 3/4" harness webbing or the belt strap on a body belt to allow the user to add on a magnet.

Uses:

- As a lanyard parking attachment point for a lanyard hardware when not in use.
- Store nuts and washers while working.
- In conjunction with PN 600071, 600072, and 600073 Tool Tethers to hold small tools that are tethered to the user out of the way.





NEW

**Buck LeverJust™
w/Black Tough Rope
92EM8-8**

A light weight Adjustable Positioning Lanyard (APL) designed specifically to allow users to lengthen without removing weight from the lanyard with the use of Buckingham's all new LeverGrab™ Length Adjusting Device (LAD), aluminum hardware and a wear resistant TrebleKern rope. Buckingham's new wear-resistant Tough Rope is constructed with an energy absorbing nylon core, red braided polyester inner core cover (red wear indicator) and an abrasion and heat resistant Technora outer jacket that eliminates the need for a wear guard. No more jamming of your wear guard! The new Buckingham LeverGrab™ LAD allows for easy one-handed adjustment of your APL. This lightweight APL is easy to use and specially designed for use on Towers, Substation and any structure where wear is an issue. Key features include:



- 11.65mm. Black TrebleKern Tough rope™ with a red wear indicator to alert the user of excessive wear.
- The New Buck LeverGrab™ LAD easily adjusts with one hand and is fully adjustable while under load, making length adjustment easier. Meets ANSI Z359.3 standard.
- This versatile lanyard can be used for positioning, suspension, or rescue.
- For use by right or left-handed users.
- A stitched eye on the tail of the rope allows the user to easily stow the excess tail on either the BuckTender (2404) or Gated Handline Carrier (2402G).
- The ANSI Z359.12 3,600 lbf. rated gate aluminum hardware reduces the overall weight.
- Maximum user weight of 350 lbs. when fully equipped.
- Meets applicable OSHA regulations, ASTM F887, and ANSI standards.



Available sizes: 6', 7', 8', 9', and 10'. Please contact Buckingham for additional sizes or styles.

The Buck LeverGrab™ is only to be used on Buckingham supplied 11.65 MM TrebleKern and ½" Kernmantle rope.

BUCKADJUSTER™



BuckAdjuster™
w/All Steel Components & Super Fabric
8' : 9A4-8
7' : 9A4-7
6' : 9A4-6

Steel snaphook and carabiner made with Super Fabric to protect rope from excessive wear. *Meets applicable ANSI, OSHA and ASTM standards.*



BuckAdjuster™
w/Black Tough Rope
92E+R-8

A new tough and lightweight version of Buckingham's popular 9-8 secondary lanyard. Features all aluminum hardware and a wear resistant black TrebleKern rope. Buckingham's wear-resistant Tough Rope is constructed with energy absorbing nylon core, red braided polyester inner core cover (red wear indicator) and an abrasion and heat resistant Technora outer jacket that eliminates the need for a wear guard. No more jamming of your wear guard!



BuckAdjuster™ w/All Aluminum Components & Super Fabric
8' : 9A4+R-8
6' : 9A4+R-6

Aluminum snap hook and carabiner meet ANSI requirements for 3,600 lb. gates. Twisted eye length adjusting device for proper orientation on the user's body belt. *Meets applicable ANSI, OSHA and ASTM standards.*

With a Super Fabric sleeve for protection from excessive wear. Helps rope slide easier on pole or ladder.

SUPERSTRAP



The SuperStrap is a lightweight work positioning strap that can be used for work positioning or transitioning or when secondary connecting device is needed. The SuperStrap features Buckingham's specially designed WebGrab which makes adjusting the lanyard in and out easy.

LENGTH	6'	7'	8'
WEB MODEL NO.	48129W2Y-6	48129W2Y-7	48129W2Y-8

Benefits of web combined with easy adjustment of rope. Patent pending WebGrab for easy adjustment. Overall length is 8'. See chart above for additional lengths. *Meets applicable ANSI, OSHA and ASTM standards.*

Ideal for use on towers or ladders.



SuperStrap
48129W2Y-8





Steel Locking Snap Hook 1706
 Gate Opening: 1⁵/₁₆"
 Eye Opening: 1" (25mm)
 Length: 6" (152mm)
 Rated to 5,000 lbf (22kN)

Lightweight Aluminum Option available: 1718



Steel Carabiner 5005L1
 Length: 7.6" (193.5mm)
 Opening: 2.04" (52mm)
 Breaking Strength: 9,000 lbs. (40kN)



Aluminum Carabiner 5555S2
 Length: 4.80" (122mm)
 Opening: .78" (20mm)
 Breaking Strength: 6,730 lbs. (30kN)

DOUBLE ACTION GATES

All gates rated to 3,600 lbs./ Meets ANSI Z359.12 Requirements



Steel Carabiner 5005T
 Length: 4.38" (111.3mm)
 Opening: .94" (24mm)
 Breaking Strength: 9,216 lbs. (41kN)



Aluminum Carabiner 5555S3
 Length: 4 7/8" (123.83mm)
 Opening: 3/4" (19.05mm)
 Breaking Strength: 6,750 lbs. (30kN)



Steel Carabiner 5005
 Length: 4.88" (124mm)
 Opening: .94" (24mm)
 Breaking Strength: 9,217 lbs. (41kN)



Aluminum Carabiner w/Eye 5005SAE
 Length: 5.25" (133mm)
 Opening: .71" (18mm)
 Breaking Strength: 5,620 lbs. (25.5kN)

TRIPLE ACTION GATES

All gates rated to 3,600 lbs./ Meets ANSI Z359.12 Requirements





BigBuck™ Locking Snap Hook 30342

Length: 13" (330mm)
Gate Opening: 3 3/4" (95mm)
Eye Opening (ID): 1 5/16" (24mm)
Rated to 5,000 lbs.
Gate rated to 3,600 lbs.



Locking Ladder Snap 30351

Length: 9.5" (241mm)
Gate Opening: 2.5" (64mm)
Eye Opening (ID): 1" (25mm)
Rated to 5,000 lbs.
Gate rated to 3,600 lbs.



Aluminum Locking Ladder Snap 1720

Length: 10" (241mm)
Gate Opening: 2.4" (60.96mm)
Eye Opening (ID): 1.2" (30mm)
Rated to 5,000 lbs.
Gate rated to 3,600 lbs.



Temporary Anchor 3902-3

Small dee to pass through a larger dee making a secure anchor. Available in any length; (e.g. for 4' length use model number **3902-4**). Rated to 5000lbs.



Temporary Anchor 3902S-4

Tie back snap that allows the user to easily attach to a lattice structure. Available in any length; (e.g. for 4' length use model number **3902S-4**). Rated to 5,000 lbs.



Wire Sling 3909-3

3/8" eye-to-eye wire sling. Protective rubber coating. 3' overall length. Rated to 5,000 lbs.



Lightweight Suspension Sling 39021J12-2

For use as a personal anchor for human support. Can be choked or basket hitched. One 2" steel D-Ring & one 1" steel D-Ring. Wear protector for wrapping around sharp objects & increasing life of the sling. Rated to 5,000 lbs.



BuckLoop™ Personal Anchor Sling 39001EG

Endless loop sling with outer tubing (acts as a built-in wear guard) over inner red 1" webbing. If outer webbing wears or is cut, inner red webbing becomes visible. Use as a personal anchor, line re-direct, foot loop or handle.



Personal Fall Arrest Sling 3702-3

Features a stitched eye on each end, one larger than the other to allow it to pass through the other. Can be girth hitched to larger angle iron while ascending a tower and used as a personal fall arrest anchor while working.

NEW

BUCKBOLTS & FLANGES



BuckBolts meet new OSHA standards as of January 17, 2017.

Features a Zinc coating that protects against corrosion in the field. Designed with a large head at the end of the step bolt to prevent foot slippage, which meets or exceeds OSHA standard 1910.24(a)(2). Has a 5" clear width, which exceeds OSHA standard 1910.24(a)(7). Rated at 5,000 lbs.

BUCKBOLT W/ANCHOR



MODEL	THREAD DIAMETER	THREAD LENGTH
3058	5/8"	2 7/16"
3075	3/4"	2 7/16"
3010Q	1"	2 7/16"
3010Q-4.5	1"	4 1/2"
3058Q3-4.5	5/8"	4 1/2"
3075Q5-4.5	3/4"	4 1/2"
3078Q	7/8"	2 7/16"
3078Q-4.5	7/8"	4 1/2"

RIGHT FLANGES



MODEL	BOLT HOLE
30R-F1	5/8"
30R-F2	7/8"
30R-F3	3/4"
30R-F4	1"

LEFT FLANGES



MODEL	BOLT HOLE
30L-F1	5/8"
30L-F2	7/8"
30L-F3	3/4"
30L-F4	1"



06

PERSONAL FALL LIMITERS & SELF-RETRACTING LIFELINES

BUCKLIMITER™

The all-aluminum BuckLimiter™ retractable features a braking system that is designed for smooth and consistent operation while eliminating that jerky feeling or lock-ups. The BuckLimiter™ is accompanied with 3,600lbs gate rated hardware and a tangle-free swivel top that increases overall mobility when working. Available in either Kevlar webbing or Dyneema polymer fiber webbing. Rated to 350lbs, with an option for a 420lbs rated unit. *Meets ANSI Z359.12.*



7' Kevlar BuckLimiter™ w/Shock Absorbing Pack
6008KQ10
 7' Extension
 Rated: 310 lbs.
 Weighs 4 lbs.
 Kevlar Webbing



7' BuckLimiter™
6008-74AA
 7' Extension
 Rated 310 lbs.
 Weighs 4 lbs.
 Dyneema Webbing
FR version available, order model
Order model **6008K-74AA.**



Our
 Smallest
 & Lightest
 Offering!

6' Mini BuckLimiter™
6009-64AA
 6' Extension
 Rated 420 lbs.
 Weighs 2 lbs.
 Dyneema Webbing



6' Mini Kevlar BuckLimiter™
6009K-64AA
 6' Extension
 Rated: 420 lbs.
 Weighs 2 lbs.
 ¾" Kevlar Webbing



10' Kevlar BuckLimiter™
6006K-104AA
 10' Extension
 Rated: 420 lbs.
 Weighs 2 lbs.
 ¾" Kevlar Webbing



TIE BACK
BUCKLIMITER™



Allows the user to "tie back" directly to steel lattice, eliminating the need for an anchor sling. A super fabric wear guard protects webbing from sharp edges. Weighs 3 lbs 2oz. Rated 310 lbs. Overall length: 7'. Meets ANSI Z359.14.



**7' Tie Back BuckLimiter™
6008Q7**

TIE BACK
BUCKLIMITER™



A lightweight 16' webbing Bucklimiter™ yoyo retractable lifeline that has a light yet rugged composite housing. Features an auto-lock steel carabiner (**5005**) as a housing connector and a steel locking snaphook (**1706**) as a webbing connector. The 6007K-164DV meets the ANSI Z359.14-2021 standard and is marked to 310 lbs. with a Class 1 rating. Materials used in this unit are all tested to 40 Cal/CM2 electrical arc exposure.



**16' Kevlar BuckLimiter™
6007K-164DV**

SELF-
RETRACTING
LIFELINES



Light yet rugged composite housing. Housing swivels to minimize twisting during use. Triple Action Steel Carabiner (**5005**) on swivel end and **1706** locking snap hook on webbing end. Rated 310 lbs. Meets ANSI Z359.14. Weighs 4.6lbs. **6007K-164DV** to meet ASTM Arc Flash Requirements.



**BuckLimiter™ w/Steel Carabiner
& Locking Snap
6007-164DV (16' Overall Length)**





07 HORIZONTAL LIFELINES & RESCUE SYSTEMS

TOWER VERTICAL LIFELINE KIT



This Vertical Lifeline Kit contains all the components necessary to safely allow climbers vertical access to a structure while keeping them 100% fall protected. The small diameter rope allows for more compact storage and weight reduction.



Temporary Vertical Lifeline Kit
109-300

LENGTH	150'	300'
MODEL NO.	109-150	109-300

INCLUDES:

- 300' of 7/16" abrasion resistant static rope with stitched eyes and metal thimbles on each end (**3952Q1-300**)
- 2 easy to install mobile fall arrest devices, move smoothly along the rope and will arrest the user in the event of a fall (**5004L4**)
- Lifeline anchor strap (**3902-6**) with ANSI rated carabiner (**5005**)
- 6 Redirect slings (**3905E-24**) & carabiners (**5005T**) allow the user to position the lifeline so it conforms to the shape of the structure.
- Storage Bag marked "Vertical Lifeline" for easy identification (**4569PQ5-150**)

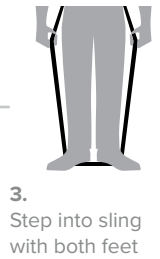
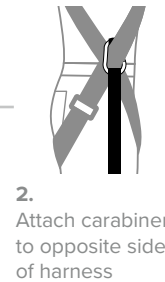
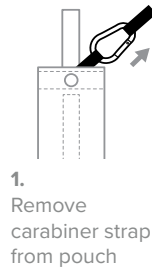




**BuckStep™ 2.0
105RSDK1**

Features Include:

- Two-part design allows for a more compact design and provides easier length adjustments compared to the one-part BuckStep™ system.
- New adjustment buckles located at harness for easier length adjustments and added strength.
- Girth hitches to the harness for easy attachment.
- The ring and connector design aids in connection of the two trauma straps.
- Small/compact pouches, just 4 ½" x 2" in size.
- Lightweight - 3.4 oz. (each), 6.8 oz. (pair).



**Tower Rescue Kit
108Q8-500**

A versatile high angle rescue kit now featuring the popular OX BLOCK™ and all necessary components to safely perform ground, structure-based and self-rescue.

Easily adaptable for different rescue situations and techniques needed, while working on lattice towers or other structures.

INCLUDES:

- Model **39S1Q2-500** – 500' of 7/16" abrasion resistant static rope w/stitched eyes and metal thimbles on each end
- Model **3902-4** – Unique Tie Back Anchor Sling
- Model **5007B1** – The BuckBully™
- Model **5005T** – ANSI Rated Steel Carabiners (Qty 1)
- Model **5005S3** - Steel Carabiner (Qty 2)
- Model **3905E-36** – Endless Loop Slings (Qty 2)
- Model **P9J8V+M-34** – Prusik Loop w/ Aluminum Ring
- Model **50061** – OX BLOCK™ rope snatch block w/integrated friction bar used for:
 - Hurtman/self-rescue
 - Lowering/Raising
 - Snubbing loads
- Model **4569PQ6-200** – Storage Bag marked "Rescue Only" for easy identification



***Only bag material withstands 40 CAL/CM2 electric arc exposure.*

**Self Rescue System
301SRK**

Bag manufactured out of material that will stand up to an electric arc flash, protecting the critical components packed inside. Also available for Two-Man buckets: Model **301SRKQ2**.

50'	75'	100'
301SRK-50	301SRK-75	301SRK-100



**Tower Rescue Blocks w/Progress Capture
3816L**

Lightweight 3/8" line. Specially designed prusik automatically locks when line is released. 4:1 mechanical advantage allows victim to be easily raised/lowered in event of injury. Includes anchor sling & micro grab that can be attached to a lifeline. 10' Lifting Height, weighs 3.75 lbs.



**Dual Rescue Strap
7003S**

Enables user to safely and easily rescue co-worker from elevated position using either our **101SR** or **108** Rescue Systems. Strap requires only one additional carabiner. Keeps the descent device closer to the user for better control.

08 OX BLOCK™ & ACCESSORIES

OX BLOCK™

The OX BLOCK™ is ASME B30 Compliant.

The **OX BLOCK™** (*patented*) is a rope snatch block that features an integrated friction bar that can be used for hurtman rescue, lowering loads, snubbing loads, and raising heavy loads. It allows the rigging professional to handle loads with greater control. When lowering loads force is transferred from the worker to the **OX BLOCK™**. The **OX BLOCK™**, with greater working load limits, is designed to replace standard handline blocks, parted blocks and various snatch blocks.



**OX BLOCK™
W/SWIVEL EYE
50061**



**OX BLOCK™
W/CLEVIS TOP
& HOOK
50062C**



**OX BLOCK™
W/CLEVIS TOP
& OX HORN™
50062D**



**OX BLOCK™
W/PIN
50063**



ULTIMATE OX KIT

FULLY
CUSTOMIZABLE

50061K21

The Ultimate OX Kit is a complete rigging system that puts numerous rigging options at the user's fingertips. For example, the user can create a 4-to-1 mechanical advantage on up to a 50' working height. Similarly, the user can create a 5-to-1 mechanical advantage on up to a 35' working height. The Ultimate OX Kit fits in a small, self-contained bag and can be stored in the back of a truck with ease. *The OX BLOCK™ is ASME B30 Compliant.*

As with most of Buckingham Manufacturing's products, the Ultimate OX Kit is completely customizable. Call customer service to customize or email sales@buckinghammfg.com.



OX BLOCK™ Swivel Eye & Carabiner w/4' Sling
50061A-4
Qty: 1



OX BLOCK™ Swivel Eye
50061
Qty: 1



Buck Side Swivel Single Sheath
50071B1
Qty: 1



Rope Bag
4374
Qty: 1



250' Rope
39SAM27Q2-250
Qty: 1



Steel Double Action Rigging Carabiner
5005S5
Qty: 4



BuckLink™ Sling
3903S-6
Qty: 1
Used for anchorage.



Prusik Loop w/Aluminum Ring
P9J8V-+M-34
Qty: 2
Used for progress capture.



Buck Side Swivel Double Sheath
50071B2
Qty: 2



**OX HOOK™
Handline Assembly**
2406S-80 (80' handline)
2406S-100 (100' handline)

Handline w/OX HOOK™ and
1706 locking snap hook.



**Basic OX™ Kit
50062K28**

The Basic OX™ Kit is a cost-effective alternative to the Ultimate OX™ Block Kit, giving you everything you need to work, lower and lift up to 40'. Packed with two BuckRigger™ pulleys (single & double sheave) opposed to the Ultimate OX™ Kits bigger Buck Side Swivels. The BOK gives you the option of a 2:1, 3:1, & 4:1 pulley system with progress capture giving you numerous rigging options at your fingertips. All this packed in one small, self-contained bag that can be stored in the back of your truck and then easily toted when it's time to put the BOK to work.

OX LINE™/
OX HOOK™ KIT



MODEL NO.	ADJUSTABLE SLING	CARABINER (5005S3)	HANDLINE ASSEMBLY LENGTH
50061K15-7/80	7'	X	80'
50061K15-7/100	7'	X	100'

2406 handline hook is for human support or material handling.

OX LINE™/
OX HOOK™ KIT



MODEL NO.	ADJUSTABLE SLING	CLEVIS TOP & HOOK	HANDLINE ASSEMBLY LENGTH
50062K14-4/80	4'	X	80'
50062K14-4/100	4'	X	100'
50062K14-7/80	7'	X	80'

2406 handline hook is for human support or material handling.



**BuckRigger™
Single Sheave
5007R1**

Single sheave pulley with a swivel side plate and swivel eye. ½" rope capacity.

WLL: 1,800 lbf.



**BuckRigger™
Double Sheave
5007R2**

Double sheave pulley with a swivel side plates and swivel eye. ½" rope capacity.

WLL: 1,800 lbf.



**Buck Side Swivel™
Single Sheave
50071B1**

Heavy duty single sheave aluminum pulley with side swivel plate and swivel eye. Side plates are ideal for use with progress capture Prusik. ⅝" rope capacity.

WLL: 2,500 lbf.



**Buck Side Swivel™
Double Sheave
50071B2**

Same as 50071B1 with double sheave.

WLL: 2,500 lbf.



**Clevis Side Swivel™
Single Sheave
50072B1**

Same features as the regular Buck Side Swivel™ with the clevis top for additional attachment options and easier change out of accessories.

WLL: 2,500 lbf



**Clevis Side Swivel™
Double Sheave
50072B2**

Same features as the Clevis Side Swivel™ single sheave in a double sheave design.

WLL: 2,500 lbf



**Steel Double Action
Rigging Carabiner
5005S5**

Steel double action carabiner.

MBS 12,500 lbs.

WLL: 2,500 lbf



**10 MM Progress
Capture Prusik
705A1-36**

10mm Prusik with an aluminum ring. Ideal for a progress capture when using Buck Side Swivels™ as mechanical advantage.



**OX TAIL™
39078TAG1-4**

4' x ⅝" adjustable sling.

39078TAG1-7

7' x ⅝" adjustable sling.

WLL:

Straight 3,200 lbf.

Choker 2,560 lbf.

Basket 6,400 lbf.



**16" 8MM Progress
Capture Prusik
P9C8V-10-16S**

A 16" long endless loop prusik made of 8mm Dyneema rope.



**30" 8MM Progress
Capture Prusik
P9J8V-10-30S**

A 30" eye to eye Prusik made of 8mm Dyneema rope.





THE BUCKPACK™ PRO

After years of development, we are proud to introduce a truly one of a kind gear bag that has been designed from the ground up to be the most versatile and feature packed gear bag available! Constructed from heavy-duty waterproof vinyl and Cordura material throughout, the BuckPack™ Pro features a removable gear garage for all hardware, devices, carabiners, etc., and a removable separator if you want to keep clothing or other gear away from gear that might be dirty. High-grade zippers throughout and a name tag/company tag pocket. Backpack shoulder straps can be packed away into a separate storage pocket in the back pad. Also, great storage for handsaws, laptops, paperwork/binders/folders, etc.



The BuckBack™ Pro w/out Gear Garage
4377

The BuckBack™ Pro w/Gear Garage
4378

- Features:**
- Constructed from heavy-duty waterproof vinyl and cordura material.
 - High-grade zippers.
 - 12 separates rows of Molle loops throughout the bag.
 - Removable gear garage for all your hardware & devices.
 - Massive front pocket to easily access all your gear.
 - Large upper pocket for helmet, gloves, and other gear you may want to easily access.
 - Rope access pocket allows you to access your rope without having to empty the bag of it contents. Great for access in the rain!
 - Top/upper access pocket with drawstring closure allows you to store/separate gear at top portion of bag.
 - Shoulder strap storage pocket.
 - Large padded back pocket for laptops or documents.
 - Numerous personal pockets throughout.



BUCK BIG MOUTH™ BAG

The Buck Big Mouth Bag is a new and improved equipment bag with an extended wide mouth (15 1/2" x 22") to make it easier and faster for workers to store all of their PPE, gear, tools, and other items in their bag with ease. No more struggling to get your essentials into your bag and no more fighting to get it closed. To order with wheels, add **W1** to P/N.



Buck Big Mouth™ Bag
15 1/2" Opening

Standard Bag
10" Opening

Measures:
22"L x 15.5"W x 19"H



Buck Big Mouth Bag (Safety Green)
47333G9R5S



Buck Big Mouth Bag (Black)
47333B3R5S

Lockable option w/two lock holes at left and right of bag closure for pad lock or cable lock available.

***Pad lock shackle must have height greater than 1 1/4". Pad lock / cable lock not included.*

**Lockable Big Mouth
Bag (Safety Green)**
47333G9L3R5S



*For a Lockable Big Mouth Bag in black, use PN **47333B3L3R5S***

BUCK BIG MOUTH™ BAG W/WHEELS

The same extended wide mouth as our regular Buck Big Mouth™ Bag but with the added features of Buckingham's new wheel design, which adds an additional two wheels and places the wheels farther apart. This product improvement was based on feedback from the field and makes the bag more stable and gives it a smoother ride when using the wheel function. This Buck equipment bag also features:



**Buck Big Mouth™ Bag
w/Wheels**
47333G9R5SW3

BLACK:
47333B3R5SW3

Our W3 option (large wheels) also features our smaller wheels. The larger wheels are removable, so if you are going through an airport, you can take the big wheels off and just have the smaller wheels!

Features Include:

- A heavy vinyl coated nylon construction.
- 2" molded rubber lip that prevents water from seeping into the bottom of the bag.
- Durable for all types of weather conditions.
- Adjustable shoulder strap with pad for comfort.
- Two side pockets with one featuring elastic tool holders for organization.
- Top grain reinforced leather straps that are double riveted.
- Industrial weight nickel plated snaps on pockets.
- Heavy duty nylon web handles sewn around the bag for accessible carrying.
- Measures 24" L x 19" H.



BUCKPACK™/
BIG BUCKPACK™
EQUIPMENT
BACKPACK

The BuckPack™ & Big BuckPack™ Equipment Backpacks are large enough to carry all the equipment of a traditional tool bag. All pockets have hook and loop closures. Features padded shoulder straps with adjustable chest strap. Zipped raw flap is designed to keep water out of bag. Carry handles located at the top of bag.



**BuckPack™
Equipment Backpack
4470G9**



**WOODLAND
CAMO:
4470C12**



**BLACK:
4470B3**



**Big BuckPack™
Equipment Backpack
4471B3**



**ORANGE:
4471O1**



**GREEN:
4471G9**



**Camo Canvas Bag
41333C7R5W3**

Features 6" heavy duty rubber wheels and retractable handle. Ideal for transporting equipment in rough terrain. New nylon side handle. Constructed of a durable Cordura nylon. ¼" double tempered Masonite bottom for durability in all weather conditions. 2" molded rubber lip that prevents water from seeping into the bottom of the bag. Measures 24" L X 11" W X 19" H.



**Utility Bag
45400B4-18**

An 18" utility bag made from water resistant nylon that fits all the necessities in one bag when in the field. Features a nylon zipper closure that won't corrode or bind and large zipper opening that allows easy access and stowage of larger tools/equipment.



POUCHES, NUT & BOLT BAGS, ROPE BAGS



BuckViz™ Vinyl Drawstring Bolt Bag
45703G9S9
9" L x 9" W



BuckViz™ Ditty Bag w/Snaps
45702G4S2
9" L x 9" W



BuckViz™ Nut & Bolt Bag w/Magnetic Strip
4570G4M2
10" L x 9" Top Tapers to 4" Bottom x 10" H



Nut & Bolt Bag w/Magnetic Strip
4570B2M2
10" L x 9" Top Tapers to 4" Bottom x 10" H



Buck Rope Bag
45691G4-150
Fits 150' of ½" Rope



Buck Rope Bag
4569G4-150
Fits 150' of ½" Rope



Bull Pin/Spud Wrench Holder
5186
9" H x 2" W



Heavy Duty Nut & Bolt Bag
4577
10" L x 10 ½" W x 3" D



Belt Mounted Took Bag
45775
5" L x 9" W x 14" H

CANVAS
BUCKETS

Two of Buckingham's most popular buckets. The Large measures 15" height x 12 ½" width with a molded rubber bottom for added durability and the mini measures 7" height x 5 ½" width. These are perfect for loose tools, connectors, nuts, and hardware - basically anything you can think of. Add a magnet strip for easy access to small hardware like nuts and bolts. Use PN **M2-3** or **M2-8**.



Large Hi-Vis Bucket
1215G9



Hi-Vis Mini Bucket
1231G4



DIGITAL CAMO:
1231C9



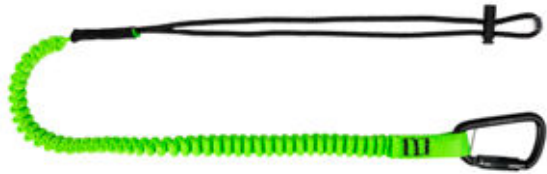
CAMO:
1231C6



TOOL
TETHERS

Dropping tools at height is serious, save yourself the worry of dropping a tool with the Buck Tool Tether lanyard that keeps your tools secured and close to you. Expands smoothly with the user's reach to reduce fatigue and contracts easily to the original length when not in use. Helps workers prevent injury, damage, and lost productivity from dropped tools.

- Stretch cord surrounded by tubular nylon webbing with lock stitching at both ends for extra security.
- Twist locking aluminum carabiner (5005P).
- Adjustable tool loop.
- Conforms to ANSI/ISEA 121-2018
- NOT for fall arrest.



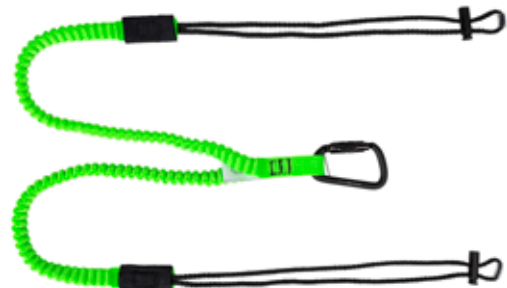
**Buck Tool Tether
600071**

- Maximum safe working capacity: 15 lbs.
- Length: 38 in – 51 in.



**35 lb. Single Leg Tool Tether
600072**

- Maximum safe working capacity: 35 lbs.
- Length: 33 in – 51 in.



**15 lb. Twin Leg Tool Tether
600073**

- Maximum safe working capacity: 15 lbs. per leg.
- Length: 33 in – 51 in.



**Tool Holder Strap
600081**

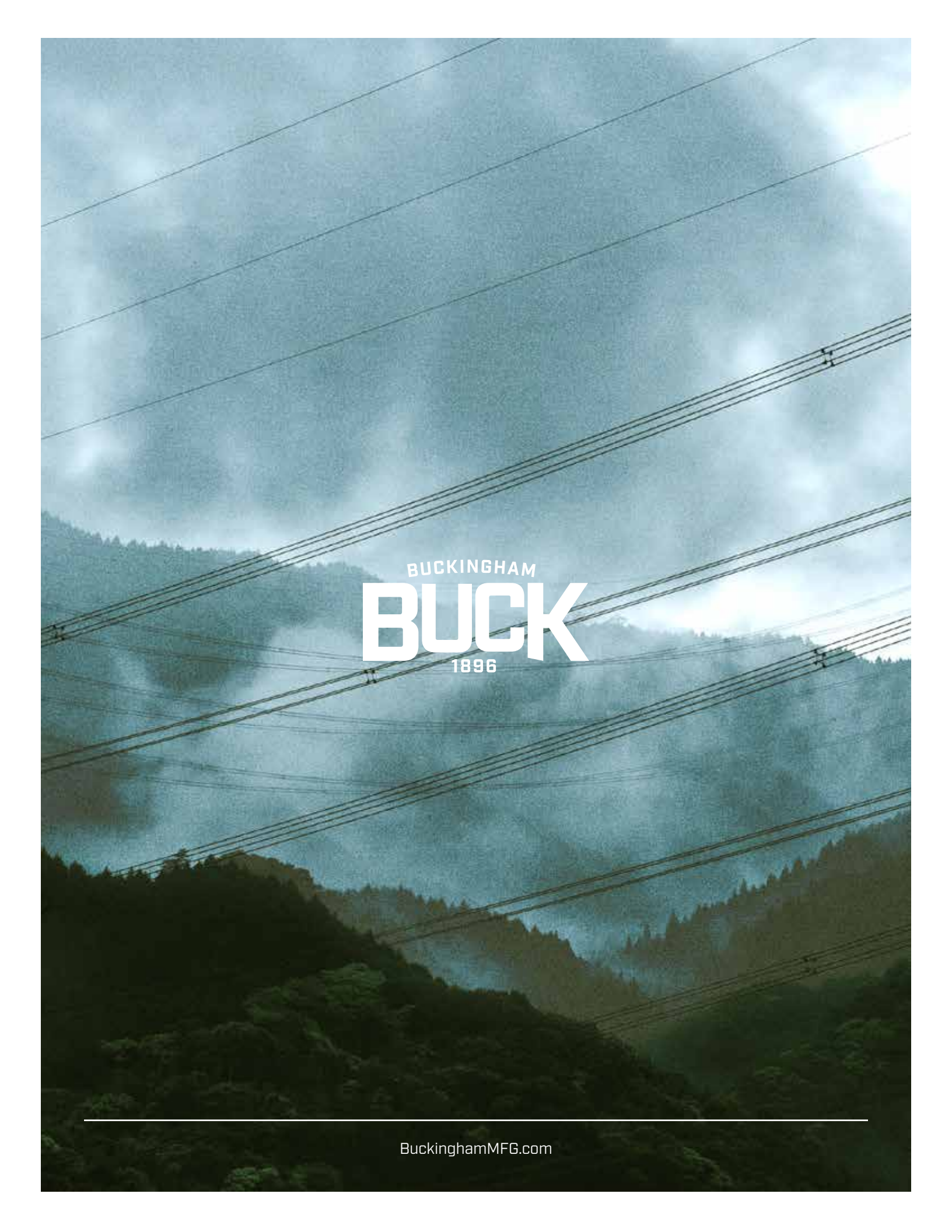
A tool holder strap that is designed to be girth hitched or cinched (using the safety green surgical tube slide) to the handle of a battery-operated tool to allow the tool to be stored on an accessory / bucket hook or used as a wristlet.



**Arc Rated Tool Holder Strap
600081K**

An arc rated tool holder strap that is designed to be girth hitched or cinched (using the pre-tied knot) to the handle of a battery-operated tool to allow the tool to be stored on a bucket hook or used as a wristlet.



A monochromatic, blue-toned landscape featuring a dense forest of evergreen trees. Multiple power lines stretch diagonally across the frame from the top left towards the bottom right. The sky is filled with soft, misty clouds, and a bright light source is visible in the upper right corner, creating a hazy atmosphere.

BUCKINGHAM
BUCK
1896