

A photograph of an electrical substation. In the foreground, a worker wearing a white hard hat and a high-visibility green safety vest is walking away from the camera. The worker is carrying a large green BUCK bag on their back and a smaller green BUCK bucket in their right hand. The substation features a complex network of metal structures, insulators, and power lines. In the background, there are several large white electrical cabinets and transformers. The overall scene is set outdoors with trees visible in the distance.

BUCKINGHAM
BUCK
1896

Summer 2024

Substation Tools & Fall Protection
PN: 492042

VOL. 6



Buckingham Manufacturing has proudly served industries with workers who climb wood poles, trees, towers and substation structures that support electricity, cable and telecommunications equipment for over 122 years. Whether for work above or below ground in these industries, we produce personal protection equipment and specialty tools for work positioning, retrieval, fall restraint, fall arrest and suspension work applications. Most people do

not think about the importance of work performed by those in this industry every day until the power goes out, the TV and computer stop working or a tree falls on a house or power line. Our customers maintain and restore services in all types of weather. This catalog is a tribute to these highly trained workers performing dangerous jobs with little recognition.

BUCK TOUGH

Knowing the dangers of these industries, we make our products Buck Tough. They are designed for rough use and no product is made without thorough

testing and inspection. This includes the raw materials, in-process manufacturing and the finished product.

BUCK TESTED

When multiple standards can be applied to a product, Buckingham uses the most stringent standard for compliance. And to make sure we are up to date on standards, we are active and voting members of ANSI, ASTM and CSA. Buckingham is committed to develop new products for our

customers that are top quality and safe. We will continue to listen to our customers to improve existing products and develop new. Our products will be produced with the utmost attention to quality and safety providing our customers assurance of being Buck Tough and Buck Tested.

PRODUCT APPLICATION

To help you use this catalog, most products are accompanied by a symbol that indicates whether

the product is intended for fall arrest, work positioning, suspension, retrieval, or fall restraint.



FALL ARREST SYSTEM
A product specifically designed to arrest a fall from an elevated position.



RETRIEVAL SYSTEM
Equipment used to evacuate a person from an area in an upright position. Not intended to arrest a fall unless also equipped for fall arrest.



WORK POSITIONING SYSTEM & WOOD POLE FALL RESTRICTION
Device allows climber to remain at the work position with hands free. It performs a fall restriction function if climber loses contact between gaffs and pole.



SUSPENSION SYSTEM
Equipment designed to suspend or lower a person to a work site. Not intended to arrest a fall.



FALL RESTRAINT SYSTEM
Equipment designed to prevent the worker from reaching an area where a free fall could occur.

MEMBERSHIP IN STANDARDS COMMITTEES, PROFESSIONAL TRADE ASSOCIATIONS, & COMMUNITY

- American National Standards Institute (ANSI)
- American Society for Testing and Materials (ASTM)
- American Society of Safety Engineers (ASSE)
- Greater Binghamton Chamber of Commerce
- International Safety Equipment Association (ISEA)
- International Society of Arboriculture (ISA)

- National Association of Manufacturers (NAM)
- National Association of Tower Erectors (NATE)
- Northeast Public Power Association
- Tree Care Industry Association (TCIA)
- United Way
- Canadian Standards Association (CSA)



PREMIUM PARTNERS



PLATINUM PARTNERS

QUALITY POLICY

Buckingham's definition of quality is giving the customer exactly what they order and expect. In support of our definition of quality, Buckingham and its employees are committed to:

- Manufacturing products that are high-quality, reliable, and with ZERO defects.
- Listening to and working closely with our customers to improve upon quality, service, and product development.
- On time delivery
- Consistently increasing performance across every aspect of our company.
- Continuously challenging ourselves to improve the quality management system to guarantee product quality and eliminate defects through the implementation of a series of objectives and results.
- Commitment to this policy starts at the top – starting with our President and General Manager – and is embodied across every facet of Buckingham and its employees.

SAFETY STANDARD & REGULATIONS

OSHA:

Title 29, CFR Chapter XVII, Parts 1910 General Industry and 1926 Construction. The Occupational Safety and Health Administration (OSHA) has spelled out certain requirements for equipment used in telecommunications industries.

- Part 1910.67 (c) (2) (iii); (c) (2) (v); (c) (2) (x) apply specifically to extensible and articulation boom platforms — belting requirements.
- Part 1910.268 (g) applies specifically to telecommunications and personal climbing equipment for use in that industry.
- Part 1910.269 (g) applies to electric power generation, transmission and distribution, Personal Protective Equipment.
- Part 1926.104 applies to safety belts, lifelines and lanyards used primarily in the construction industry.
- Part 1926.453 (b) (2) (iii); (b) (2) (v); (b) (2) (x) apply specifically to aerial lift - belting requirements.
- Part 1926.502 fall protection system criteria and practices.
- Part 1926.954 Electric Power Transmission and Distribution - Personal Protective Equipment.
- Part 1910.140 Support I

ASTM F887

The American Society for Testing and Materials (ASTM).

ASTM F887, "Standard Specifications for Personal Climbing Equipment."

- Pole and Tree Climbers and Accessories
- Body Belts
- Positioning Devices (Positioning Straps, Adjustable Positioning Lanyards, Nonadjustable Positioning Lanyards)
- Wood Pole Fall Restriction Devices (WPF RD)
- Arborist Saddles
- Electric Arc Performance Qualification Testing (Harnesses, Energy Absorbing Lanyards)

ANSI Z359

The American National Standards Institute (ANSI) in Z359 establishes requirements for the performance, design, marking, qualification, instruction, training, use, maintenance and removal from service of connectors, full body harnesses, lanyards, energy absorbers, anchorage connectors, fall arresters, vertical lifelines, and self-retracting lanyards comprising personal fall arrest systems.

- Z359.0 "Definitions and Nomenclature Used for Fall Protection and Fall Arrest"
- Z359.2 "Minimum Requirements for a Comprehensive Managed Fall Protection Program"
- Z359.3 "Safety Requirements for Positioning and Travel Restraint Systems"
- Z359.4 "Safety Requirements for Assisted-Rescue and Self-Rescue Systems, Subsystems and Components"
- Z359.6 "Specification and Design Requirements for Active Fall Protection Systems"
- Z359.7 "Qualification & Verification Testing of Fall Protection Products"
- Z359.11 "Safety Requirements for Full Body Harnesses"
- Z359.12 "Connecting Components for Personal Fall Arrest Systems"
- Z359.13 "Personal Energy Absorbers and Energy Absorbing Lanyards"
- Z359.14 "Safety Requirements for Self-Retracting Devices for Personal Fall Arrest & Rescue Systems"
- Z359.15 "Requirements for Single Anchor Lifelines and Fall Arresters for Personal Fall Arrest Systems"
- Z359.16 "Safety Requirements for Ladder Fall Arrest Systems"

CSA Z259

CSA International is a provider of third party product testing and certification services for compliance to national and international standards. The CSA Certification mark, generally required by the Canadian market, indicates that a product has been evaluated by their process (examination, testing and follow-up inspection) and complies to the requirements of the applicable standard for which the product is labeled.

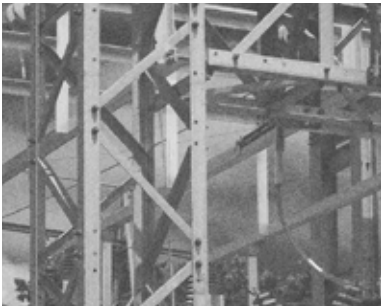
- CSA-Z259.1 - Body belts and saddles for work positioning and travel restraint
- CSA-Z259.2.2 - Self retracting devices for personal fall-arrest system
- CSA-Z259 - Full Body Harness
- CSA-Z259 (R2015) - Energy Absorbers and Lanyards
- CSA-Z259.12 - Connecting Components For (PFAS)
- CSA-Z259.14 - Fall Restrict Equipment For Wood Pole Climbing.

ANSI A10.32

- A10.32- "Personal Fall Protection Used in Construction & Demolition Operations"

ANSI Z133

- Z133 "Safety Requirements for Arboricultural Operations"



BUCKINGHAM
BUCK
1896

This catalog was developed on a recent trip to visit our great friends at SELCAT (Southeastern Line Constructors Apprenticeship & Training) in Newnan, Georgia. Their mission is to keep the Southeast outside electrical industry supplied with the necessary force of highly skilled and qualified workers. We'd

like to specifically thank them for their generous hospitality and use of their beautiful substation training yard to help develop this new catalog. The contents of this catalog were shot in a de-energized substation training facility. For more information, visit SELCAT.com or call (678) 423-1338.

Buckingham MFG
1-11 Travis Avenue
Binghamton, NY 13904-1690, USA

+1 800 937 2825

buckinghammfg.com

sales@buckinghammfg.com

facebook.com/buckinghammfg
instagram.com/buckingham_mfg
twitter.com/buckingham_mfg
youtube.com/buckmfg
google.com/+buckinghammfg

CONTENTS

*This mini catalog is a sampling of the thousands of products we manufacture.
For our full line, please visit BuckinghamMFG.com*

- 06** LADDER STABILIZATION/FALL PROTECTION
- 10** HARNESES/BODY BELTS
- 13** POSITIONING LANYARDS
- 15** DUAL LANYARDS
- 17** PERSONAL FALL LIMITERS/
SELF-RETRACTING LIFELINES
- 19** HORIZONTAL LIFELINES/RESCUE SYSTEMS
- 22** BUCKET TRUCK
- 26** OX BLOCK™ & ACCESSORIES
- 32** EQUIPMENT BAGS



BUCK LADDER TETHER

See the NEW BLT video:
BuckinghamMFG.com/videos

Buckingham Manufacturing is proud to announce the Buck Ladder Tether. The BLT is a ladder mounted lifeline system which allows 100% fall protection for the user while ascending or descending a ladder. The BLT utilizes a specially designed Ladder Lashing System to secure the ladder from the ground, to the structure from which you will be working on. The Ladder FP Anchor Strap attaches to the top of the ladder securing the lifeline to the ladder. Assembled onto the lifeline is the

Patent Pending ANSI Z359.15 rated BuckArrester™ system that connects to the users harness and allows them to ascend & descend the ladder while remaining 100% fall protected. In the event of a fall from the ladder, the BuckArrester™ will arrest the fall while the Ladder Lock System keeps the ladder secured to the structure. The BLT must be used with the sternal attachment point of an ANSI Z359.11 compliant full-body harness.



Buck Ladder Tether (BLT) 128R

GOES WELL WITH:

or or

BLT X-Style Harness w/ BuckStep™ U601A8Q3 **BLT X-Style Harness w/ Work Positioning D-rings U601A3Q1** **BuckArticulator™ "Y" Style Harness 69B9DQ6**

THE BLT LADDER SET UP

The BLT provides ladder fall protection basically anywhere in a substation!



Installing stabilizer strap of BLT over trussing to access the buss.



Front view of BLT attached to trussing.



Rear view of BLT attached to trussing.



BLT attached to transformer (low mount).



BLT attached behind lifting ears of transformer.



Climbing a ladder with the BLT.

LADDER LOCK SYSTEM

Goes great with the BLT!

Unsecured/unstable ladders in substation structures are potentially dangerous combinations. Buckingham offers a safety solution that includes ladder safety straps that can be stored/enclosed

in tough storage bags attached to your ladder for easy access. No more forgetting the safety straps in the vehicle or the garage. The straps are ready for deployment when the ladder goes up.



**Buck Ladder
Lock System
(Bottom & Top)
355BT**



**Buck Ladder
Lock System
(Top)
355T**



**Buck Ladder
Lock System
(Bottom)
355BG9**



INCLUDES

- Each system comes with the complete ladder lock system, top and bottom bags with straps.
- Prevents kick out and excessive rocking.
- Bags do not interfere with climbing space.
- Doesn't interfere with ladder storage.
- Highly visible brightly colored bags to remind technicians of deployment.
- Quick access to straps.
- Weather resistant storage bags.

INSTALLING THE LADDER LOCK SYSTEM



Installing upper stabilizer strap of Ladder Lock (model 355T) w/fall protection. Being used w/BuckHook™ Climbing System. See Pg. 23 for more info.



Ladder Lock (model 355T) used to secure top of ladder prior to working.



Installing stabilizer strap of Ladder Lock (model 355B) to steel.



Ladder Lock (model 355B) used to secure ladder to steel prior to working.



02 HARNESSSES/ BODY BELTS

ADJUSTABLE 4-D BODY BELTS

ADJUSTABLE BODY BELT SIZING CHART				
Belt Size	S	M	L	X
D-Size	20, 21, 22, 23	23, 24, 25, 26	26, 27, 28, 29	29, 30, 31, 32, 33



6-D Adjustable Body Belt 20122CM1

The revolutionary patented multi-hole D-ring provides numerous points of connection for both your primary (WPFR) and secondary lanyard (s). The numerous points of connection allow the user to climb, work, and transition in several different configurations. 2 1/2" offset connection points prevent the WPFR device and secondary lanyard from binding on each other.

Features:

- Offers an adjustable man-rated belt strap and an adjustable work positioning D-piece that allows the user to customize the size and feel of the belt.
- Low profile construction of a 2-D Body Belt, with the functionality of a 4-D stacked Body Belt, reducing surface area and weight overall.

Also available with a Quick Connect Belt Strap!
Model **20122CKM1**



Adjustable TriFit™ Short Back Belt 20192C3M

A truly one-of-a-kind and fully adjustable belt, now equipped with 3 forms of adjustment. The patent pending Adjustable TriFit™ Short Back Belt allows the user to easily adjust both the upper and lower sets of D-rings AND offers an adjustable man-rated upper belt strap.

Features:

- Larger Aluminum upper D-rings reduce the overall weight of the belt and make it easier to connect a secondary lanyard for transitioning.
- Perfect for those who work in areas of the country where there are large temperature swings – when one part of day or season you could be wearing only FR pants and shirt, then next you could be wearing heavy-duty Carhartt's. Having an adjustable belt allows the user to adjust for comfort and practicality.



Adjustable Short Back Belt™ 20192CM-SIZE

- 4 stacked & fully floating D-Rings.
- The 4 D-Rings support and make the use of wood pole fall restriction devices extremely simple. We recommend the EZ Squeeze™.
- Fully padded 7" short back makes long days more comfortable. High-quality and ultra-soft leather makes for that instant "broke-in" feel.
- Features four sizes – small, medium, large, X-Large.



**2-D TrueFit™ Belt
1998C**

A **Patent-Pending**, fully adjustable, 2-D TrueFit™ belt that allows your dee size to be adjusted between sizes 20-30. This belt can be retrofitted directly to any 'H' or 'X' style full-body harness. We suggest pairing this TrueFit™ Belt with one of our popular TrueFit™ harnesses, to create a fully adjustable body belt/harness combo!

Other features:

- Quick connect belt strap buckle for quick and easier donning.
- Interlocking buckles that allow the user to retrofit the belt to a harness.
- Steel d-rings.
- Lightweight, just 2.5 lbs.!
- Narrow back pad measuring 4 ¼" wide features 2 layers of FR material constructed with hook and loop connecting material that aids in the dee size adjustment.



Also available with quick connect buckles to retrofit belt to harness, order model **1998CQ2**

Applications:

- Transmission tower
- Lattice tower
- Ladder
- Bucket truck (when retrofitted to harness)



**Arc Tested
Bucktech™ Harness
68K966K6**

This harness is great for work positioning on a ladder or steel as well as suspension work. Frontal attachment makes it ideal for use with the BLT.

Weighing in at approximately 8lbs and loaded with features. The BuckTech™ is taking tower safety to the next level. The BuckTech's removable seat, lightweight aluminum D-Rings, quick connect buckles, and much more make this harness one of the most versatile harnesses on the market.

Features:

- Low profile sternal D-ring for use with mobile fall arrestors & rope grabs.
- Chest strap adjustment buckles allow user to properly position sternal D-ring to prevent sliding during fall
- Different color D-rings allow the user to easily differentiate between the four.
- Aluminum hip and seat D-rings reduce overall weight for added comfort
- Adjustable shoulder straps allow for proper positioning of rear dorsal D-ring
- Quick connect chest and leg straps make the BuckTech™ a breeze to don.
- The Belt strap can easily be removed to add tool or bolt bags.
- BuckTech™ gear loops are rated to 100lbs.
- Removable bridge for extra mobility.



**Buck Economy™ FR Harness
(Non Step-In Design)
62995K6Q5**

The Buck Economy is perfect for substation and ladder work.

The Buck Economy™ FR harness is an Arc Rated full body tower/substation harness that is an economical choice. Features Interlocking buckles on the chest strap, a steel Dee dorsal attachment, friction buckles for height adjustment, grommet leg straps, lightweight, padded body belt for comfort, work positioning d-rings and a grommet waist strap, and shoulder pads distribute weight of tools. *Meets all applicable OSHA, ASTM, ANSI and ASTM-F887 Arc Flash Requirements.*

Popular Applications: *New construction and maintenance; Great for work on gang operated air switches, great for work on vertical gang operated air switches, static and bonding install to ground grid, station CTPT XFMR's for station power and metering installation, station lighting both on lattice or steel poles; Extension ladders; Climbing when using a lifeline*



**BuckOhm™ TrueFit™ Harness w/Web Loop
U68L7NQ3**

The unique value of Buckingham's new BuckOhm™ TrueFit™ Harnesses is that they truly are a universal harness. One size will fit anyone from a small up to a 3XL! Whether your 5' 1" and 130 lbs. or 6' 6" and 325 lbs., this harness will fit you. Unique adjustment features both on front and back of the harness make this a perfect choice if you are looking for a universal harness.

Features:

- Dielectric quick connect chest buckle.
- Web loop dorsal attachment.
- Lightweight back pad.
- Dielectric quick connection leg strap buckles for easy donning.
- Frontal rescue loops.
- Dual trauma straps.
- Harness comes w/energy absorbing lanyard breakaway attachment (ensure ANSI compliance if removing back pad) & leg strap retainers to use if needed.



**Dielectric 'H' Style
Harness w/Pigtail
68L9EQ17**

All dielectric hardware and padded shoulders makes this harness easy to don and ideal for use on a ladder or steel when used with a body belt.

Same great features as the Dielectric 'H' Style Harness (model **68L9EQ12**), but with a dorsal pigtail with powder coated d-ring attachment.

Features Include:

- 9KV rated Dielectric hardware.
- Ideal for light suspension work.
- Lightweight.
- Dielectric quick connect chest buckle.
- Dorsal pigtail with powder coated D-Ring attachment.

- Dual trauma straps
- FR rated padded shoulder straps.
- Dielectric quick connect leg strap buckles for easy donning.
- Dielectric friction buckles on vertical shoulder straps for height adjustments.
- Optional lightweight, removable body belt available (model **1361Q1**).

Meets all applicable OSHA, ASTM, ANSI and ASTM-F887 Arc Flash Requirements.

Popular Applications: Utility buckets, horizontal surfaces, general fall arrest and restraint.

BUCKTENDER™

See the new video:
[BuckinghamMFG.com/
videos](http://BuckinghamMFG.com/videos)

The BuckTender™ is a lightweight, compact retractable designed to keep excess slack from the tail of the BuckAdjuster™ secondary lanyard or wood pole fall restriction device out of the way while climbing and working. It also allows the user to make length adjustments without having to remove the tail from

a handline hook or ditty bag. The BuckTender™ is available with a single leg or dual leg (if user has the tails of both the secondary lanyard and wood pole fall restriction device on one side). The BuckTender™ will break away when approximately 50 lbs. of force is applied.



**Single Leg
BuckTender™
2404**



**Dual Leg
BuckTender™
2404D**



**Heritage Single Leg
BuckTender™
2404-BH**



**Heritage Dual Leg
BuckTender™
2404D-BH**

PARKING ELEMENTS



**Energy Absorbing Lanyard Parking
Attachment
N14**

ANSI rated and easily installed in the field. Designed to breakaway when a load of more than 120 lbs. is applied.



**Magnet Pouch
M4**

- Wrap onto 1 3/4" harness webbing or body belt strap to add on a magnet to store nuts and washers while working.
- Arc Flash Tested materials meet ASTM F887 requirements.
- Use as a lanyard parking attachment for lanyard hardware when not in use.



03 POSITIONING LANYARDS

BUCK LEVERJUST™

The Buckingham LeverJust™ is a light weight Adjustable Positioning Lanyard (APL) designed specifically to allow users to make one-handed adjustments without removing weight from the lanyard thanks to the new LeverGrab™. *Meets all applicable ANSI, OSHA, and ASTM standards.*

NEW

Buck LeverJust™ 9M8-8

Features a Super Fabric Wear Guard for longevity and rough surfaces.

Key features include:

- ½" Kernmantle rope with a red wear indicator to alert the user of excessive wear.
- The New Buck LeverGrab™ LAD easily adjusts with one hand and is fully adjustable while under load, making length adjustment easier.
- This versatile lanyard can be used for positioning, suspension or rescue.
- For use by right or left handed users.
- A stitched eye on the tail of the rope allows the user to easily stow the excess tail on either the BuckTender (PN 2404) or Hand Line Carrier (PN 2402G).
- The ANSI Z359.12 3,600 lbf. rated gate aluminum hardware reduces the overall weight.
- Maximum user weight of 350 lbs. when fully equipped.



Available sizes: 6', 7', 8', 9', and 10'. Please contact Buckingham for additional sizes or styles.

NEW

Buck LeverJust™ with Tough Rope 92CM8-8

Tough Rope makes this ideal for use in a substation and working on steel structures.

The Buck LeverJust™ with Tough Rope is perfect for those working on steel structures (like a substation or tower) where wear and sharp edges can be an issue. Features new wear-resistant 11.65 MM. TrebleKern Tough Rope, which is nearly indestructible. Buckingham's new wear-resistant

Tough Rope is constructed with an energy absorbing nylon core, red braided polyester inner core cover (red wear indicator) and an abrasion and heat resistant Technora outer jacket that eliminates the need for a wear guard. No more jamming of your wear guard!



Available sizes: 6', 7', 8', 9', and 10'. Please contact Buckingham for additional sizes or styles.

Also available in black! (model **92EM8-8**)



BUCKADJUSTER™
WITH ALL STEEL
COMPONENTS
& CLEAR
RUBBER TUBE

Clear plastic tube protects rope when in use.

A fully adjustable positioning lanyard (APL) that features the BuckGrab™ and a 90 degree twist in the eye of the cam for use with a body belt. The BuckAdjuster™ has a full red core wear indicator. Other features include: user friendly patented Buckingham double locking rope snap, clear protective tube to help provide maximum rope life, and a stitched eye that allows user to minimize length for easy storage. *Meets all applicable ANSI, OSHA, and ASTM standards.*



**BuckAdjuster™ w/Steel Hardware
& Clear Rubber Tube**

- 8' : 9-8
- 7' : 9-7
- 6' : 9-6

BUCKADJUSTER™
WITH ALL STEEL
COMPONENTS
& SUPER FABRIC

With a Super Fabric Wear Guard for protection from excessive wear. Helps rope slide easier on lattice, abrasive surfaces, or ladders.

Features a steel snap hook and carabiner and comes with a Super Fabric Wear Guard to protect from excessive wear and tear. *Meets applicable ANSI, OSHA and ASTM standards.*



**BuckAdjuster™ w/Steel
Components & Super Fabric**

- 8' : 9A4-8
- 7' : 9A4-7
- 6' : 9A4-6

BUCKADJUSTER™
WITH ALL
ALUMINUM
COMPONENTS
& SUPER FABRIC

With a Super Fabric Wear Guard for protection from excessive wear. Helps rope slide easier on lattice, abrasive surfaces, or ladders.

This model features all aluminum components and comes with a Super Fabric Wear Guard to protect from excessive wear and tear. *Meets applicable ANSI, OSHA and ASTM standards.* Also available with Tough Rope (92C+R-8)

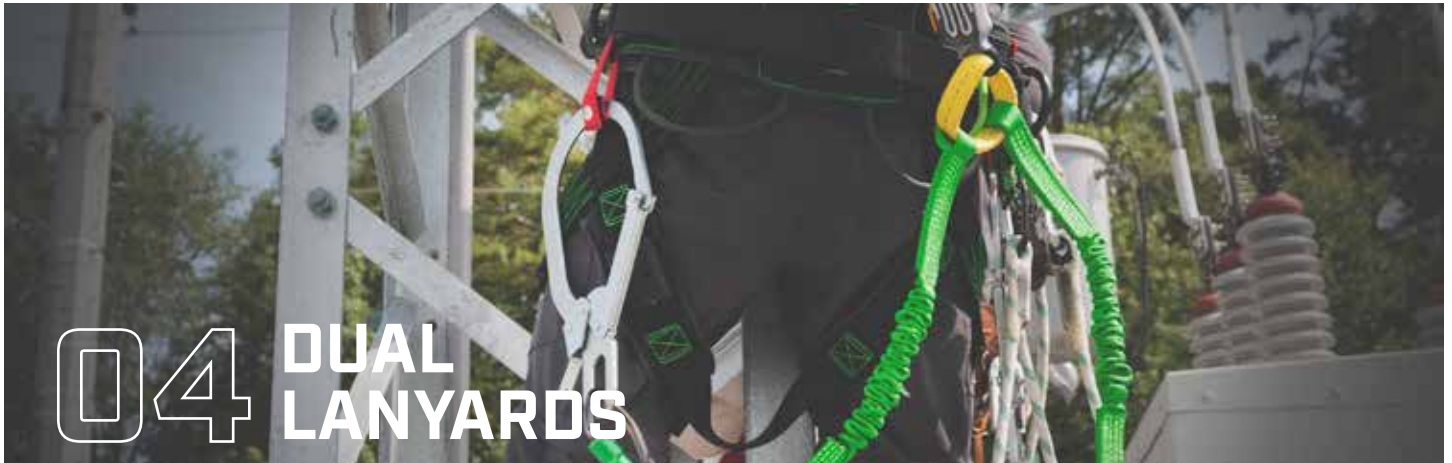


**BuckAdjuster™ w/All Aluminum
Components & Super Fabric**

- 8' : 9A4+R-8
- 6' : 9A4+R-6



Two BuckAdjuster's™ attached to your d-rings and lifting eyes allows for 100% fall protection and great maneuverability.



**BUCK
COMBOYARD™**



Meets ASTM
F887 Electric
Arc Performance
Requirements.

The ComboYard™ combines the best features of various lanyards on the market and can accommodate any size angle iron. Features a 5' dual tie-back lanyard with wear guard and a 12' fall (Force Factor II) ANSI rated shock absorber and rescue loops for quick, easy and safe rescue.

Includes Tie Back Snaps with 5,000 lb. rated gate, two ANSI 3,600 lb. gate Big BuckSnaps™ that attach around angle iron up to 4". Meets OSHA 1926.954, ANSI Z359.13-09 and ASTM F887-13 Arc Flash Requirements.



HOW TO

1. Attach end of the dual lanyard to the anchor step bolt/flange with the tie back snaps (Figure A), or existing lattice by either the Big BuckSnaps™ (Figure B) or by wrapping the lanyard leg around lattice and then attaching the tie back snaps back to lanyard (Figure C). Step up until attachment point is at waist level.
2. Take the other end of the dual lanyard, connecting to the anchor above.
3. Once secure, disconnect the connection at the waist and ascend until the connection above is at the waist. Repeat the process until desired height is reached.

Figure A



Tie Back Snaps can be used to snap over step bolts.
Note: Step Bolts must have a large enough head to prevent snap from sliding off.

Figure B



Tie Back Snaps can attach to ring of ANSI rated Big BuckSnaps™, hooking directly over tower lattice.
Note: ComboYard™ becomes 6' dual shock absorbing lanyard with Big BuckSnaps™ added.

Figure C



Tie Back Snaps can be attached back to the lanyard. This allows climber to continue to use the lanyard in the event of larger attachment points.

BUCK
VERSA-YARD™

A versatile lanyard featuring all aluminum hardware, which reduces the weight to only 2.4 lbs. Elastic core reduces the length of each leg when not in use and has rescue loops for quick and safe rescue. The 12' fall (Force

Factor II) energy absorbing pack keeps the impact force to the allowable parameters when anchored at foot level. Meets/Exceeds OSHA 1926.954, ANSI Z359.13-9, ASTM F887-13, and Electric Arc Performance Requirements.



**BuckViz™
Versa-Yard™
5U67DQ1**



Big BuckSnaps™ attached to the Versa-Yard™ and attached over angle iron.



Climbing angle iron using the Versa-Yard™ and a BuckTech™ harness.

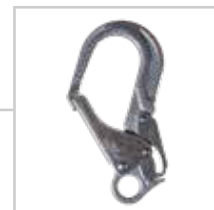
The triple action, auto-locking captive eye carabiners can be connected to:



**Big BuckSnap™
30342**



**Step Bolt Snap
1719**



**Locking Ladder Snap
1720**

05 PERSONAL FALL LIMITERS/ SELF-RETRACTING LIFELINES

BUCKLIMITER™

The all-aluminum BuckLimiter™ retractable features a braking system that is designed for smooth and consistent operation while eliminating that jerky feeling or lock-ups. The BuckLimiter™ is accompanied with 3,600 lb. gate rated hardware and a tangle-free swivel top that increases

overall mobility when working. Available in either Kevlar webbing or Dyneema polymer fiber webbing. Rated to 350 lbs., with an option for a 420 lb. rated unit. Meets ANSI/ Z359.12.



**BuckLimiter™
6008KQ10**
7' Extension
Rated: 420 lbs.
Weighs: 1.9 lbs.



**Tie Back
BuckLimiter™
6008Q7**
7' Extension
Rated: 310 lbs.
Weighs 3.2 lbs.



**BuckLimiter™
6008-74AA**
7' Extension
Rated: 310 lbs.
Weighs 4 lbs.



**Mini BuckLimiter™
6009-64AA**
6' Extension
Rated: 420 lbs.
Weighs 2 lbs.

**Our
Smallest
& Lightest
Offering!**

BUCK PFL HOLDER

The Buckingham PFL Connector Link is designed to be used to attach two separate personal fall limiters (PFL) to dorsal fall arrest attachment of a harness to create a dual retractable lanyard. A dual retractable lanyard is for single person use ONLY. For use with Buckingham 6008 & 6009 series PFL's.



**Buck PFL
Holder
220279C**



**BUCKYARD™ W/
LOCKING SNAP
& WEB LOOP**

Ideal for users with web dorsal loops on their harness & who want a light/compact shock absorber.

For a full body harness w/ a dorsal web loop we recommend a corresponding nylon loop on one end of energy absorber with a 1706 locking snap hook on the other end. To order an energy absorber with locking snaps on both ends: 6': **8VV1D16S1**. *Meets applicable OSHA, ASTM and ANSI Requirements*



BuckYard™

6' : 84V1D16S1
4' : 84V1D14S1



**BUCKYARD™
STRETCH W/2
LOCKING SNAPS**

Ideal for those who want smaller equipment (shrinks to approx. 44" because of elastic bungee). Great for users with metal dorsal D-rings.

Same benefits of the Buckyard™ but with the addition of an elastic bungee (this reduces the size of a 6' lanyard to about 44" greatly reducing the chance of tripping over it). For a full body harness w/steel d-ring dorsal attachment we recommend a corresponding energy absorber with 1706 locking snap hooks on both ends. To order an energy absorber with locking snap on one end and web loop on the other end: 6': **84V1D16S1**. *Meets applicable OSHA, ASTM and ANSI Requirements*



**BuckYard™
Stretch**

6' : 8VV1D16S1
4.5' : 8VV1D14.5S1
4' : 8VV1D14S1



**BUCKYARD™
STRETCH W/
LOCKING SNAP
& WEB LOOP**

Ideal for those who want smaller equipment (shrinks to approx. 44" because of elastic bungee). Great for users with web dorsal loops.

Same benefits of the Buckyard™ but with the addition of an elastic bungee (this reduces the size of a 6' lanyard to about 44" greatly reducing the chance of tripping over it). For full body harness w/web loop dorsal attachment. 1706 locking snap hook on one end and web loop on the other end. *Meets applicable OSHA, ASTM and ANSI Requirements*



**BuckYard™
Stretch**

6' : 84V7D16S1
4.5' : 84V7D14.5S1



**BUCKYARD™
STRETCH W/
LOCKING SNAPS**

Ideal for those who want smaller equipment (shrinks to approx. 44" because of elastic bungee). Great for users with metal dorsal D-rings.

Same benefits of the Buckyard™ but with the addition of an elastic bungee. This reduces the size of a 6' lanyard to about 44" greatly reducing the chance of tripping over it. Use with a full body harness w/steel d-ring dorsal attachment. 1706 locking snap hook on both ends. *Meets applicable OSHA, ASTM and ANSI Requirements*



**BuckYard™
Stretch**

6' : 8VV7D16S1
4' : 8VV7D14S1



BUCKSTOP™

Ideal for users with web dorsal loops.

The BuckStop™ energy absorber utilizes an 8" pack that deploys when a fall exerts force of approximately 650 lbs. Model numbers below are for use with a harness with a nylon dorsal loop. *Meets applicable OSHA, ASTM and ANSI Requirements*



BuckStop™

6' : 54V116S1
4' : 54V114S1

BUCKARREST™

Ideal for users with web dorsal loops.

An energy absorber with a flexible shock pack that duplicates the operation of the BuckStop™. The 16" shock pack is covered by a water resistant nylon tube and the 1" yellow nylon web is adjustable. This model is designed to accommodate a harness with a dorsal web loop. For a 6' model with locking snaps on both ends order: **6VV126S1**. *Meets applicable OSHA, ASTM and ANSI Requirements*



**BuckArrest™
64V126S2**



06 HORIZONTAL LIFELINES/ RESCUE SYSTEMS



**BuckHook™
Climbing Kit
KIT9-18**

Use with a ladder or when climbing steel lattices to ensure 100% fall protection when ascending and descending.

The BuckHook™ system is ideal in “first man up” situations when you cannot access a suitable anchor point from the ground. The system uses a shepherd's hook attached to a fiberglass pole with a lifeline. Simply attached

a fall arrester to the lifeline and the lifeline to sternal harness attachment and you are 100% fall protected.

INCLUDES:

- One **50371U** BuckHook™.
- One **5004L3** mobile fall arrester with triple action carabiner.
- One **5005** auto lock steel carabiner w/3,600 lb. rated gate keeper.
- One **39S2Q2-16** 7/16" - 1/2" semi static Kernmantle 16' Lifeline.
- One **45400R2-18** 18" Utility bag.

Use the BuckHook™ Climbing Kit to climb steel lattices or ladders to access the PT.



1.
Lift the BuckHook™ w/lifeline to desired point on the structure.



2.
Secure the BuckHook™ onto structure.



3.
Attach MFA to lifeline, and the lifeline to sternal harness attachment and you are ready to climb 100% fall protected!



**Tower Arm Fall Protection Kit
KIT57-40**

The Tower Arm Fall Protection Kit includes everything to keep you safe while traversing to the end of an arm, down a ladder and back to the structure. Simply attach the lifeline to a suitable anchor point on the structure, attach a redirect sling and carabiner behind your MFA every 6' as you work your way out to the end of the arm. The mobile fall arrestor allows the user to easily move horizontally or vertically. The lightweight BuckSorber™ 2 energy absorbing pack reduces force on the system in the event of a fall.

Includes:

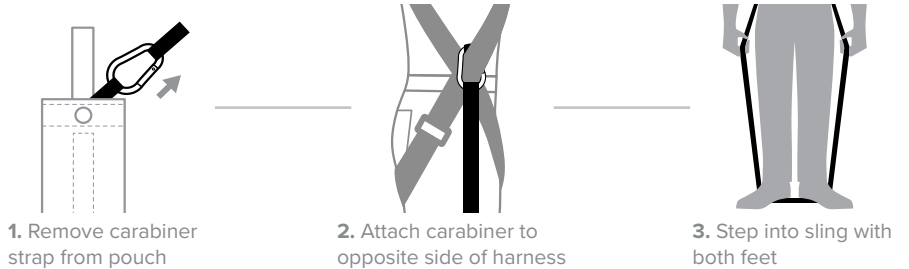
- One **5004L3** mobile fall arrestor with triple action carabiner.
- One **400000X12** BuckSorber™ 2
- Four **3905E-24** 2' redirect slings.
- Four **5005T** double action steel carabiners.
- One **39S2Q2-40** 40' Lifeline.
- One **5005** Triple action steel carabiner.
- One **3902-6** 6' anchor sling.
- One **5555S3** Triple action aluminum carabiner.
- One **4560** storage bag.



**BuckStep™ 2.0
105RSDK1**

The Patent Pending BuckStep™ 2.0 is a two-part BuckStep™ suspension trauma relief system.

- Two-part design allows for a more compact design and provides easier length adjustments compared to the one-part BuckStep™ system.
- New Adjustment buckles located at harness for easier length adjustments and added strength.
- Girth hitches to the harness for easy attachment.
- The ring and connector design aids in connection of the two trauma straps.
- Small/compact pouches, just 4 1/2" x 2" in size.
- Lightweight 3.4 oz (each), 6.8 oz (pair).
- An Arc tested system that meets ASTM F887 product specifications.
- Meets ANSI Z359 & OSHA 1926.954(b)(1)(ii).



**Rescue Blocks w/Progress Capture
3816L**

This improved lightweight rescue system features a lightweight 3/8" line and a specially designed prusik that automatically locks when the line is released. The 4 to 1 mechanical advantage allows a victim to be easily raised or lowered in the event of an injury. System includes an anchor sling and micro grab that can be attached to a lifeline. 10' Lifting Height. Weighs 3.75 lbs.

■ Ideal for rescue when you don't have a knife to cut rope.



1. Set up Rescue Blocks.



2. Raise victim with Rescue Blocks and progress capture.



3. Rescue, lowering with the OX BLOCK™. See page 30 for OX BLOCK™ & accessories.



**Confined Space
Rescue Kit
105Q2-30**

This specially developed system allows for a rescue to be performed without having to send additional personnel into danger or an extremely small space. Entrant suited with a full body harness (No. 603S8Q211) enters the confined space without being tethered. For rescue the attendant/rescuer uses the rescue line system (39SAM13Q9-30). The rescue line equipped with a carabiner is attached to a 16' telescopic pole via the telescopic pole adapter (Model 40). The adapter releases the carabiner

See the video: BuckinghamMFG.com/videos

once the rescuer locates one of four reflective rescue loops and "hooks" into a loop and pulls back on the pole. The rescue line is then tied on to the winch and the rescuer then proceeds to raise the victim. Rescue Kit includes: manhole guard, winch, 39SAM13Q9-30 Rescue Line Kit and 16' telescopic fiberglass pole [not pictured]. Model 39SAM13Q9-30 Rescue Line Kit includes two 30' rescue lines, Model 40 telescopic pole adapter and rope bag.



INCLUDES:

- One manhole guard.
- One winch.
- One 16' telescopic fiberglass pole.
- One **39SAM13Q9-30** Rescue Line Kit.
- Two 30' rescue lines.
- One model **40** telescopic pole adapter.
- One storage bag.



Full Body Harness:
603S8Q211

Reflective strips on webbing help you locate a victim in the dark by shining a light on them.



Full Body Harness:
603A8Q12

Reflective strips on webbing help you locate a victim in the dark by shining a light on them.





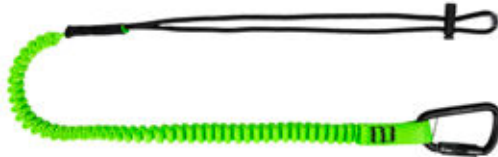
07 BUCKET TRUCK

TOOL TETHERS

Dropping tools at height is serious, save yourself the worry of dropping a tool with the Buck Tool Tether lanyard that keeps your tools secured and close to you. Expands smoothly with the user's reach to reduce fatigue and contracts easily to the original length when not in use. Helps workers prevent injury, damage, and lost productivity from dropped tools.



- Stretch cord surrounded by tubular nylon webbing with lock stitching at both ends for extra security.
- Twist locking aluminum carabiner (5005P).
- Adjustable tool loop.
- Conforms to ANSI/ISEA 121-2018
- NOT for fall arrest.



**Buck Tool Tether
600071**

- Maximum safe working capacity: 15 lbs.
- Length: 38 in – 51 in.



**15 lb. Twin Leg Tool Tether
600073**

- Maximum safe working capacity: 15 lbs. per leg.
- Length: 33 in – 51 in.



**35 lb. Single Leg Tool Tether
600072**

- Maximum safe working capacity: 35 lbs.
- Length: 33 in – 51 in.

BUCKET HOOK W/TETHER HOLE

The newly designed bucket hook can fit up to a 2 1/2" bucket lip and now features a tool tether connection eye. The tether connection eye allows for the Buck Tool Tether **600071** to be attached for extra tool fall protection.

Features:

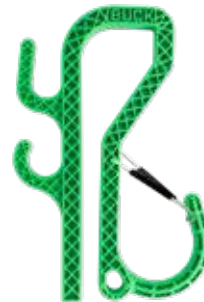
- An outside hook with a 2 1/2" hook opening.
- 40 lb. WLL (3:1 safety factor).
- 2 inside accessory hooks w/30 lb. WLL.
- 3/4" inside opening.



**Bucket Hook
w/Tether Hole
2410**



**Bucket Hook w/Tether
Hole & Tool Tether
2410T**



**Bucket Hook
w/Tether Hole & Gate
2410G**



**Bucket Hook w/Tether
Hole, Gate & Tool Tether
2410GT**



**Self Rescue System
301SRK**

Different lengths available (add "-length of rope" to part number; example: 301SR-50 for 50' length rope).

The 301SRK self-rescue system is lightweight and compact with a bag manufactured out of arc flash rated material.

Features:

- Descender made of light-weight aircraft grade aluminum features an anti-panic release brake, which will stop the descender if the user releases or compresses the descender all the way, making this the go-to product for all of your self-rescue situations.
- The TVAC descent line is compact measuring only 6.8mm and stands up to heat on long descents.
- System packed in a weather-resistant bag that will stand up to an electric arc flash.
- Two rappelling straps to be used with 'H' Style Harness Single Man Rated to 310lbs.
- For a two man system, order **301SRKQ2**, which includes two descenders for a two-man bucket.



**High Elevation
Self Rescue System
101SR**

Different lengths available (add "-length of rope" to part number; example: 101SR-50 for 50' length rope).

The Buckingham High Elevation Self Rescue System provides all the components required to self-rescue or if the need arises to rescue a fellow employee. The 101SR descender will automatically lock until the user compresses the handle allowing a smooth controlled descent. An additional built in (anti-panic) safety feature stops descent if the user

compresses the handle too hard. This unit will allow the rescuer the advantage of lowering a hurt person with ease as well. The 101SR kit comes with retrofit rappelling straps that can be added to an existing harness for self-rescue. Rated to 310 lbs.

Tested to requirements of ANSI Z359.4.

Replacement bag available: **4563**

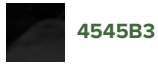


**Boom Ratchet Strap
3809R**

Designed to be used when your aerial boom truck has no anchor point, or your anchor point is in an inconvenient location. Standard length is 50". Rated to 5,000 lbs.

AERIAL BASKET COVER

Also Available:



**Aerial Basket Cover
Safety Green
4545G9**

Vinyl coated nylon cover wraps snugly around standard one-man buckets with a heavy duty sewn in bungee cord and snap to secure itself to the bucket. Includes one grommet hole to secure cover to bucket. Fits up to a 29" square bucket. Also available with a rigid fiberglass insert, which is perfect for days with heavy snow or heavy rain. Order PN **4545G9**. For a two man bucket cover, order PN **4548G9**

BUCKET HOOKS



**Bucket Hook w/Tether Hole
2410**



**Bucket Hook w/Tether Hole & Tool Tether
2410T**



**Bucket Hook w/Tether Hole & Gate
2410G**



**Bucket Hook w/ Tether Hole, Gate & Tool Tether
2410GT**



**Bucket Hook
2401-3**

Size: 1 1/16"
Material: Polymer
Fits Bucket Size: 3" lip
Breaking Strength: 150 lbs.



**Bucket Hook
2401**

Size: 1 1/16"
Material: Polymer
Fits Bucket Size: 2 1/4" lip
Breaking Strength: 100 lbs.
Sold in pairs.



**Bucket Hook
5358**

Size: 5/8"
Material: PVC
Fits Bucket Size: 3" lip
Breaking Strength: 100 lbs.
*Model **5058** available for standard lip baskets*



**Bucket Hook
2403**

Size: 5/8"
Material: Nylon
Fits Bucket Size: 3" lip
Breaking Strength: 150 lbs.
Sold in Pairs. *Now carries a 5 year warranty w/proof of purchase.*



**Bucket Hook
5334**

Size: 3/4"
Material: PVC
Fits Bucket Size: 3" lip
Breaking Strength: 150 lbs.

AERIAL BASKET TOOL APRONS

Features a magnetic strip on top of apron for loose hardware



**13 Pocket Hi-Vis Tool Apron w/Magnet
4500YG9M2**

Sewn-in pockets through two layers of vinyl coated nylon and one layer of heavy canvas. Two large 3/4" grommets reinforced with PVC rods suspend apron from the bucket using PVC or polymer hooks. Features a magnetic strip for loose hardware. Hooks are not included.

Also available in black, order model **4500YB3M2**



**13 Pocket Hi-Vis Tool Apron
4500YG9**

Sewn-in pockets through two layers of vinyl coated nylon and one layer of heavy canvas. Sewn-in stiffener and 2 pocket holsters, a hammer loop and a PVC cap bottom. Hooks are not included.

Also available in black, order model **4500YB3**



**18 Pocket Hi-Vis Tool Apron
4045G9**

Heavy vinyl coated nylon aerial basket tool apron with sewn-in pockets. Two large 3/4" grommet holes reinforced with PVC rods suspend the apron from the bucket using PVC or polymer hooks. Hooks are not included.

Also available in black, order model **4045B3**





Oval Bucket
12167H1

A popular oval bucket with a canvas exterior and a plastic liner. 6 inside pockets.
Measures 14" L x 7 1/2" W x 19" H. One pair of **5334** bucket hooks included (see previous page for specs).



Tool Tray
4510

The 4510 fiberglass storage tray can be used to conveniently store cabling and other miscellaneous equipment giving you easy access to your hardware. Can be hung on the inside or the outside of an aerial bucket. Measures 18 1/2" L x 10" W x 11 1/2" H. One pair of **5334** bucket hooks included (see previous page for specs). Order **4510M2** for tray w/magnetic strip for loose hardware.



Tool Tray
4509

The 4509 fiberglass tool tray is designed to hang off the lip of an aerial bucket that features a built in bumper that will keep the tray level. Built on hanger fits a 2 5/8" basket lip with a reinforced lip around tray. Measures 19" L x 8" W x 8" D.
For a tool tray insert that will provide various options for tool storage order PN **4509D**.



Wheel Chocks
4559 - Ribbed
4558 - Smooth

Buckingham wheel chocks grip the surface of the ground and truck tires for a secure lock. The interior of the wheel chocks have a void in the center to allow easy handling. Weight: 8.5 lbs. Solid rubber chocks also available; order model **4557**.

- **4559** ribbed chocks measures 10" L x 8" W x 6" H.
- **4558** smooth chocks measures 10" L x 8" W x 5 1/2" H.
- **4557** solid chocks measures 10" L x 8" W x 5 1/2" H.



08 OX BLOCK™ & ACCESSORIES

OX BLOCK™

"I never go anywhere in a substation without my OX BLOCK™ and OX Horn!"

The **OX BLOCK™** (*patent pending*) is a rope snatch block that features an integrated friction bar that can be used for hurt man rescue, lowering loads, snubbing loads, and raising heavy loads. It allows the rigging professional to handle loads

with greater control. When lowering loads force is transferred from the worker to the **OX BLOCK™**. The **OX BLOCK™**, with greater working load limits, is designed to replace standard handline blocks, parted blocks and various snatch blocks.



OX BLOCK™
W/SWIVEL EYE
50061



OX BLOCK™
W/CLEVIS TOP
50062



OX BLOCK™
W/CLEVIS TOP
& OX HORN™
50062D

THE OX BLOCK™ IN ACTION

RAISE IT



RAISE IT



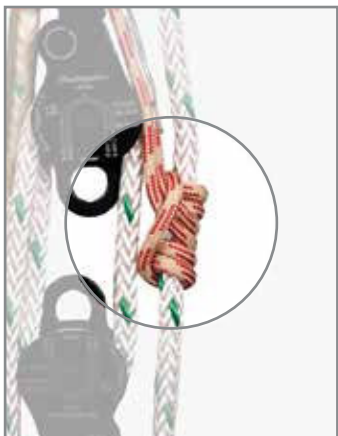
LOWER IT



SNUB IT



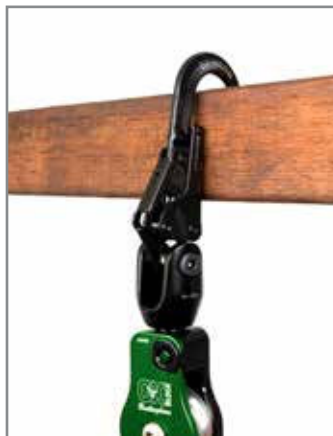
LOCK IT



SLIDE IT



HOOK IT



RESCUE IT



For more OX BLOCK™ products and accessories,
visit buckinghammfg.com.

USING THE OX BLOCK™ IN A SUBSTATION



OX BLOCK™

HANDLINE ASSEMBLIES

OX LINE™/
OX HOOK™ KIT



MODEL NO.	ADJUSTABLE SLING	CARABINER (5005S3)	HANDLINE ASSEMBLY LENGTH
50061K15-4/80	4'	X	80'
50061K15-4/100	4'	X	100'
50061K15-7/100	7'	X	100'

2406S handline hook is for human support or material handling.

OX LINE™/
OX HOOK™ KIT



MODEL NO.	ADJUSTABLE SLING	CLEVIS TOP & HOOK	HANDLINE ASSEMBLY LENGTH
50062K14-4/80	4'	X	80'
50062K14-4/100	4'	X	100'

2406S handline hook is for human support or material handling.

For more OX BLOCK™ products and accessories,
visit buckinghammfg.com.

BUCK BLOCKS & ACCESSORIES



**Buck Rigger™
Single Sheave
5007R1**

Single sheave pulley with a swivel side plate and swivel eye. 1/2" rope capacity.

WLL: 1800lbf



**Buck Rigger™
Double Sheave
5007R2**

Double sheave pulley with a swivel side plates and swivel eye. 1/2" rope capacity.

WLL: 1800lbf



**Buck Side Swivel™
Single Sheave
50071B1**

Heavy duty aluminum pulley with a single side swivel plate and swivel eye. Side plates are ideal for use with progress capture Prusik. 5/8" rope capacity.

WLL: 2500lbf



**Buck Side Swivel™
Double Sheave
50071B2**

Heavy duty aluminum pulley with double side swivel plates and swivel eye. Side plates are ideal for use with progress capture Prusik. 5/8" rope capacity.

WLL: 2500lbf



**Clevis Side Swivel™
Single Sheave
50072B1**

Same features as the regular Buck Side Swivel™ with the added benefit of the clevis top for additional attachment options and easier change out of accessories.

WLL: 2500lbf



**Clevis Side Swivel™
Double Sheave
50072B2**

Same features as the Clevis Side Swivel™ single sheave in a double sheave design.

WLL: 2500lbf



**Steel Double Action
Rigging Carabiner
5005S5**

Steel double-action carabiner w/MBS rating of 12,000 lbs. (55kN) and WLL of 2,500 lbf. (11kN). Rated to meet ANSI Z359 standards & ANSI A10-48.



**Buck Pin
223892R**

A SLIC Pin specifically customized to fit the OX clevis top. The Buck Pin allows the user to add or remove accessories more quickly and easily than the shoulder bolt does.



**10 MM
Capture Prusik
705A1-36**

10mm Prusik with an aluminum ring. Ideal for a progress capture when using Buck Side Swivels™ as mechanical advantage.



**OX TAIL™
39078TAG1-4
39078TAG1-7**

4' x 5/8" adjustable sling.
7' x 5/8" adjustable sling.
WLL:
Straight 3200 lbf.
Choker 2560 lbf.
Basket 6400 lbf.



**30" 8MM Progress
Capture Prusik
P9J8V-10-30S**

A 30" eye to eye Prusik made of 8mm Dyneema rope.



**BuckLink™ Sling
3903S-6**

The BuckLink™ is made of lightweight Spectra material. Each loop is rated to 5,000 lbs. With 16 loops, users can adjust the sling to form a rated anchor of any size.



**OX HORN
31291B**

2" gate opening. Replaces a non-rated "meat hook". WLL of 2500 lbs. w/gate closed. 1000 lbs. WLL w/gate open. For use on the Ox Block™ w/ clevis top.



**OX HOOK™
2406S**

Features a 3600lbf rated locking gate making rescue situations more efficient. WLL of 2500lbs with gate closed. 1000 lbs. WLL with gate open.



**Rigging Hook
223814R**

A hook latch meant strictly for attachment purposes, not to carry a load. Has a working load limit of 1 ton.

ULTIMATE OX KIT

50061K21

FULLY
CUSTOMIZABLE

The Ultimate Ox Kit is a complete rigging system that puts numerous rigging options at the user's fingertips. For example, the user can create a 4-to-1 mechanical advantage on up to a 50' working height. Similarly, the user can create a 5-to-1 mechanical advantage on up to a 35' working height. The Ultimate Ox Kit fits in a small, self-contained bag and can be stored in the back of a truck with ease.

As with most of Buckingham Manufacturing's products, the Ultimate Ox Kit is completely customizable. Call customer service to customize or email sales@buckinghammfg.com.



OX BLOCK™ Swivel Eye & Carabiner w/4' Sling
50061A-4
Qty: 1



OX BLOCK™ Swivel Eye
50061
Qty: 1



Buck Side Swivel Single Sheath
50071B1
Qty: 1



Rope Bag
4374
Qty: 1



250' Rope
39SAM27Q2-250
Qty: 1



Steel Double Action Rigging Carabiner
5005S5
Qty: 4



BuckLink™ Sling
3903S-6
Qty: 1
Used for anchorage



Prusik Loop w/Aluminum Ring
P9J8V+M-34
Qty: 2
Used for progress capture



Buck Side Swivel Double Sheath
50071B2
Qty: 2



BUCK BIG MOUTH BAG™

The Buck Big Mouth Bag™ is a new and improved equipment bag with an extended wide mouth (15 ½" x 22") to make it easier and faster for workers to store all of their PPE, gear, tools, and other items in their bag with ease. No more struggling to get your equipment into your bag and no more fighting to get it closed.

No more struggling to fit your gear into your equipment bag!



Buck Big Mouth Bag

Standard Bag



Buck Big Mouth Bag™
(Safety Green)
47333G9R5S



Buck Big Mouth Bag™
(Black)
47333B3R5S



15" (bottom), 18" (top)

Shown on cover

BuckPack™ Equipment Backpack 4470G9

The BuckPack™ is loaded with storage for all your equipment and tools. The BuckPack™ is large enough to fit all of your equipment and tools that you would put in a standard bag, but now has the added convenience of carrying on your back, which makes it perfect for remote locations. Measures 22" H x 15" W at bottom and tapers to 18" W at the top for a large opening and a 8" x 15" hard plastic bottom. All pockets have hook and loop closures. Features cushion

padded shoulder straps with adjustable chest strap. Zipper rain flap is designed to keep water out and equipment dry. Carry handles at top of bag.

Black also available; use **4470B3** when ordering.

Available with wheels; use **4470G9W1** when ordering.



Rope Bag
4569G4-150

Heavy duty water resistant rope bag with large handles, a drawstring closure, stiffened sides and small outside pockets for things like carabiners or tools. Holds up to 150' of ½" rope. Measures 12" D X 15" H.



Buck Haul Bag
4370B14

The Buck Haul Bag is constructed of heavy vinyl with 4300 cubic inches of internal storage built to withstand the most abusive environments and treatment. The ergonomic back pad is removable for travel and storage purposes and provides added comfort for those that pack it to the brim. The climbing spec webbing reinforces seams and wear points. Metal buckles and snaps far outlast plastic components. Built with 2 large grommets on underside for drain holes, or to run rope out of bottom. Fits 200' of ½" rope. Measures 13" D x 27" H.



Small Buck Haul Bag
4371G9

The Small Buck Haul Bag is the same as the Haul Bag on the previous page but 9" smaller in height. It features the same heavy duty vinyl that is built to withstand the most abusive environments and treatment. The ergonomic back pad is removable for travel and storage purposes and provides added comfort for those that pack it to the brim. Climbing spec webbing reinforces seams and wear points. Metal buckles and snaps far outlast plastic components. Built with (2) large grommets on underside for drain holes, or to run rope out of bottom. Measures 14" D x 18 ¾" H.



Equipment Bag with
Rain Flap
45331G9R5

This safety green heavy duty vinyl coated nylon equipment bag is a new and improved version of a fan favorite Buckingham equipment bag. Features include a 2" molded rubber lip that prevents water from seeping into the bottom for extended durability in all-weather conditions, a rain-flap to prevent

water getting in from the top of the bag, a large separate inside pocket, top grain reinforced leather straps that are double riveted, and heavy duty nylon web handles sewn around the bag for accessible carrying. Measures 24" L x 11" W x 19" H.



**12" Canvas Bucket
1215G9**

Durable Nylon Coated Vinyl with a solid continuous PVC ring around the top and a molded rubber bottom to keep form and consistency. Features an 8" x 8" inside pocket and measures 12" D x 15" H.



**Vinyl Nut & Bolt Bag
4570G9**

Vinyl, lightweight, and easy to attach/detach from belts with a snap and D-ring connection. No bottom corners to trap small parts. Add 'M2' for magnetic strip for loose hardware. Measures 9" W x 10" H.



**Mini Bucket
1231G4**

Perfect for loose tools, connectors, nuts and other small parts and hardware. Another popular use is for a mini trash can in your truck or on your desk. Measures 5" D x 7" H.



**Nut & Bolt Bag
4570G4**

Top quality cordura nylon with reinforced top, drain holes and attachment straps. No bottom corners to trap small parts. Add 'M2' for magnetic strip for loose hardware. Measures 9" W x 10" H.



**Oval Bucket
121615CH1L**

Hard canvas body with molded top rings and nylon web handles. Has 14 outside tool pockets and 15 inside pockets. Bucket hooks not included (see pg. 28 for bucket hook options). Measures 14" L x 6 1/2" W x 10" H



**Canvas Bolt Bag w/Magnetic Strip
4570B2M2**

Same features as the green 4570G4 above but with an added magnetic strip to store loose hardware and easily access it when required. Measures 9" W x 10" H.



**Heavy Duty Canvas Nut & Bolt Bag
4577**

A heavy duty canvas nut & bolt bag with a nylon reinforced top to keep the opening of the bag rigid. Includes slots to stow spud wrenches. Connects to your belt or harness via tunnel loop. Measures 10 1/2" W x 10" H.



**Double Back Holster
42266-BL**

5 pockets and a two way knife snap. Rigid leather construction to prevent tight fitting tools from bending, buckling and wearing through the back of pouch. Measures 10 3/4" H X 8" W.



**Double Back Holster
42266S-BL**

A short back version of the 42266-BL. Features 5 pockets and a two way knife snap. Keeps tools more accessible when using Mobility Belts. Measures 9 1/4" H X 8" W. For left handed model, order 42266LS.



**Spud Wrench Holder
52871**

A bull pin/spud wrench holder made from heavy duty side leather. Measures 8 1/2" H x 7" W

10 TOOLS/HARDWARE/ACCESSORIES

All gates rated to 3,600 lbs/ Meets ANSI Z359.12 Requirements

DOUBLE ACTION GATES



Steel Locking Snap Hook 1706
 Gate Opening: 1 $\frac{5}{16}$ " (25mm)
 Eye Opening: 1" (25mm)
 Length: 5.8" (147mm)
 Breaking Strength: 5,000 lbf.



Steel Carabiner 5005L1
 Length: 7.6" (193.5mm),
 Opening: 2.04" (52mm),
 Breaking Strength: 9,000 lbs. (40kN)

THE 5005T IS NOW SUPPLIED WITH PRE-DRILLED CAPTIVE PIN HOLES!



Captive Eye Pin 5005TC
 A pin designed to be installed in the **5005T** carabiner(s) to create an eye that will ensure the device attached remains in place.



Steel Carabiner 5005T
 Length: 4.37" (111mm),
 Opening: .94" (24mm),
 Breaking Strength: 9,216 lbs. (41kN)



Aluminum Carabiner 5555S2
 Length: 4.8" (122mm),
 Opening: .78" (20mm),
 Breaking Strength: 6,744 lbs. (30kN)

TRIPLE ACTION GATES



Aluminum Carabiner 5555S3
 Length: 7" (177.8mm),
 Opening: $\frac{3}{4}$ " (19.05mm),
 Breaking Strength: 6,744 lbs. (30kN)



Steel Carabiner 5005
 Length: 4.8" (124mm),
 Opening: .95" (24mm),
 Breaking Strength: 9,217 lbs. (41kN)



Aluminum Carabiner w/Eye 5005SAE
 Length: 5.3" (135.5mm),
 Opening: .78" (20mm),
 Breaking Strength: 5,732 lbs. (25.5kN)



Big BuckSnap™ Locking Snap Hook
30342

Gate Opening: 4" (85mm)
Eye Opening (ID): 1⁵/₁₆" (24mm)
Length: 13" (330mm)
Rated to 5,000 lbs.
Gate rated to 3,600 lbs.



Locking Ladder Snap
30351

Gate Opening: 2 1/2" (64mm)
Eye Opening (ID): 1" (25mm)
Length: 9 1/2" (241mm)
Weight: 1 lb. 7oz.
Rated to 5,000 lbs.
Gate rated to 3,600 lbs.



Aluminum Locking Ladder Snap
1720

Gate Opening: 2" (63.5mm)
Eye Opening (ID): 1 3/16" (30mm)
Length: 10" (254mm)
Rated to 5,000 lbs.
Gate rated to 3,600 lbs.



Temporary Anchor
3902-3

Small Dee to pass through a larger Dee making a secure anchor. Available in any length; (e.g. for 4' use model number **3902-4**). Rated to 5,000 lbs.



Anchor Sling w/ Wear Guard
3904J12-3

Features a wear guard protector to wrap around sharp objects. 2 steel rings on either side of the sling allows for any type of connector to be hooked onto it. 3' overall length. Rated to 5,000 lbs.



BuckLink™ Sling
3903S-6

Daisy chain style anchor sling made of lightweight Spectra material. Each loop is rated to 5,000 lbs. Users can adjust the 16 loop sling to form a rated anchor of any size. 6' overall length. Rated to 5,000 lbs.



Lightweight Suspension Sling
39021J12-2

Designed to be used as a personal anchor for human support. Can be choked or basket hitched. Flexible for easy handling and installation. Steel rings allow any type of connector. Comes with a wear protector. Rated to 5,000 lbf.



Sling/ Hardware Magnet
M3

Designed to keep your sling eye securely in place while attaching the other end to the transformer lifting ear. Magnet attaches around sling hook and loop closure for easy use. Can also be used to hold various nuts and bolts on a line belt or aerial basket.

NEW

BUCKBOLTS & FLANGES



BuckBolts meet new OSHA standards as of January 17, 2017.



MODEL	BOLT HOLE
3058	5/8"
3075	3/4"



MODEL	BOLT HOLE
30R-F1	5/8"
30R-F2	7/8"
30R-F3	3/4"
30R-F4	1"



MODEL	BOLT HOLE
30L-F1	5/8"
30L-F2	7/8"
30L-F3	3/4"
30L-F4	1"

Hot dip galvanized to add a zinc coating that protects against corrosion in the field. Designed with a large head at the end of the step bolt to prevent foot slippage, which meets or exceeds OSHA standard 1910.24(a)(2). Has a 5" clear width, which exceeds OSHA standard 1910.24(a)(7). Rated at 5,000 lbs.

**Heavy Duty
Gated Handline Carrier
2402GH**

Designed to breakaway when approximately 33 lbs. of pressure is applied. The gate closed breakaway strength increases by 10 lbs.



**Gated Handline Carrier
2402G**

Gate keeps handline or tools securely stored while climbing or working. Straightens when approx. 25 lbs. pressure applied, allowing the handline to pull free.



**BUCK HIGH
VISIBILITY
ERGOBLADE™**

*Ergonomic round handle
makes for easy handling.*

This safety green ErgoBlade™ has a rubber handle that was ergonomically designed to fit comfortably in your gloved hand. The ergonomic handle also helps create the perfect cutting angle without the hassle of constantly and repetitively rotating the wrist. Specifically designed to eliminate the high force needed to skin cable. Available in black by ordering model **7091**.



**Buck High Visibility
Ergoblade™
7091G**

**KNIFE W/
ERGONOMIC
HANDLE**

An ergonomic handled knife that measures 9 7/8" length with an accessory ring.



**Knife w/Ergonomic
Handle
7090**

**SKINNING KNIFE
W/YELLOW
HANDLE**

A molded plastic handled knife that measures 8" length with an accessory ring.



**Skinning Knife w/Yellow
Handle
7086**

**SKINNING
KNIFE W/RED
HANDLE**

A molded plastic handled knife that measures 8 1/2" length with an accessory ring.



**Skinning Knife w/Red
Handle
7089**



BUCKINGHAM
BUCK
1896

buckinghammfg.com