

# BUCKINGHAM BUCK 1896





# BUCKINGHAM BUCK 1896

**BUCKINGHAM MFG** has proudly served industries with workers who climb wood poles, trees, towers and structures that support electricity, cable and telecommunications equipment for over 120 years. Whether for work above or below ground in these industries, we produce personal protection equipment and specialty tools for work positioning, retrieval, fall restraint, fall arrest and suspension work applications. Most people do not think about the importance of work performed by those in this industry every day until the power goes out, the tv and computer stop working or a tree falls on a house or power line. Our customers maintain and restore services in all types of weather. This catalog is a tribute to these highly trained workers performing dangerous jobs with little recognition.

*Cover photo credit:*

*Peter Hirsch, Kevin Beavers, Micah Clifton, Travis Lightener, Dmfr Rossi, Chris Martinez, Jared Katynski, Robert Moore*

---

Buckingham MFG  
1-11 Travis Avenue  
Binghamton, NY 13904, USA

+1 800 937 2825

[buckinghammfg.com](http://buckinghammfg.com)

[sales@buckinghammfg.com](mailto:sales@buckinghammfg.com)

[facebook.com/buckinghammfg](https://facebook.com/buckinghammfg)  
[instagram.com/buckingham\\_mfg](https://instagram.com/buckingham_mfg)  
[twitter.com/buckingham\\_mfg](https://twitter.com/buckingham_mfg)  
[youtube.com/buckmfg](https://youtube.com/buckmfg)  
[google.com/+buckinghammfg](https://google.com/+buckinghammfg)



---

# CONTENTS

*This mini catalog is a sampling of the thousands of products we manufacture.  
For our full line, please visit [BuckinghamMFG.com](http://BuckinghamMFG.com)*

- 04** NEW PRODUCTS
- 07** CLIMBERS / PADS / ACCESSORIES
- 11** WOOD POLE FALL PROTECTION
- 15** BODY BELTS
- 17** OX BLOCK™ & RIGGING
- 19** BUCKETS / BAGS / POUCHES / ACCESSORIES



# 01 NEW PRODUCTS



## ComfortLite™ Pole Climber Kit A94K9V-BL

The ComfortLite™ Pole Climber Kit is our lightest and most comfortable climber kit to date! Weighing just 5 lbs. per pair, making it nearly 1 lb. lighter than any existing Buckingham Climber Kits. Ergonomically designed to relieve pressure points and direct pressure to non-sensitive areas of the leg while climbing. This was accomplished using both a dual layer of compression padding and a lightweight plastic cuff that achieve the ultimate fit for comfort.

### Features & Benefits:

- More than 4 lbs. lighter than the closest competition!
- The ComfortLite™ cuff is a one-piece design removing the need for additional components traditionally seen on our kits.
- New weighted web-end designed to create grip, rigidity, and add weight to the end of cinch strap making it easier and faster to cinch and uncinch pad.
- 4" wide upper strap with a cinch loop ensures a secure and snug fit.
- Patented GRiP™ (Gaff Ridge Position) technology keeps gaff pointed toward the heart of the pole, promoting ease of climbing and a more natural upright position.
- Hook and Loop cinch Foot Straps (21401C-BL).
- BuckViz™ Green Magnetic Gaff Guards (6909M2).
- Gaff length: 1 ¾"
- 350 lb. user weight capacity. Meets ASTM F887 standard.

### HOW DOES IT COMPARE TO OTHER CLIMBER KITS?

**COMFORTLITE™**  
5 LBS.

**BUCKALLOY™ BLACK CLIMBER KIT**  
6.6 LBS.

**CLOSEST COMPETITOR**  
9 LBS.



## Bucksqueeze™ Lite 486DK4MA

Buckingham's lightest WPFR device to date! Just 3.5 lbs. Our closest competitor weighs nearly double the weight.

### Features:

- Nose D-ring:
  - Constructed of a large d-ring section for connection purposes that features a slotted "nose" section to capture the rotosnap to create a rigid connection, which makes ascending and descending the pole easier and more efficient.
  - The large d-ring section creates ease of reconnecting while transitioning, allowing for more efficient transfers. Great for rodeos!
- An Ergonomic aluminum / steel handle that provides maximum control of the device and comfort during long days on the pole.
- An aluminum WebGrab™ that features an extended eye cam efficiently positions the inner strap that creates zero binding and allows for easier replacement of the inner strap.





**6-D Adjustable Body Belt  
20122CM1**

The revolutionary patented multi-hole D-ring provides numerous points of connection for both your primary (WPFR) and secondary lanyard (s). The numerous points of connection allow the user to climb, work, and transition in several different configurations. 2 1/2" offset connection points prevent the WPFR device and secondary lanyard from binding on each other.

**Features:**

- Offers an adjustable man-rated belt strap and an adjustable work positioning D-piece that allows the user to customize the size and feel of the belt.
- Low profile construction of a 2-D Body Belt, with the functionality of a 4-D stacked Body Belt, reducing surface area and weight overall.

Also available with a Quick Connect Belt Strap!  
Model **20122CKM1**



**Adjustable TriFit™ Short Back Belt  
20192C3M**

- A truly one-of-a-kind and fully adjustable belt, now equipped with 3 forms of adjustment. The patent pending Adjustable TriFit™ Short Back Belt allows the user to easily adjust both the upper and lower sets of D-rings AND offers an adjustable man-rated upper belt strap.
- Larger Aluminum upper D-rings reduce the overall weight of the belt and make it easier to connect a secondary lanyard for transitioning.
- This belt is perfect for those who work in areas of the country where there are large temperature swings – when one part of day or season you could be wearing only FR pants and shirt, then next you could be wearing heavy-duty Carhartt's. Having an adjustable belt allows the user to adjust for comfort and practicality.



**OUR LIGHTEST HARNESS EVER MADE!**



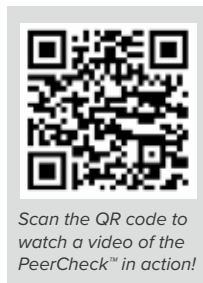
**Featherweight Harness w/Dielectric Buckles  
68L98Q1**

- Buckingham's ACT (Anti Chafe Technology) Collar™ features folded, stitched, and leather lined shoulder straps to reduce neck chafing while working overhead, creating a much more comfortable day on the job.
- Lightweight – just 3.1 lbs.
- Torso adjustment features no cumbersome web tails.



**Featherweight Harness  
6398JQ1**

- Buckingham's ACT (Anti Chafe Technology) Collar™ features folded, stitched, and leather lined shoulder straps to reduce neck chafing while working overhead, creating a much more comfortable day on the job.
- Lightweight – just 2.8 lbs.
- Features a hook and loop chest strap and aluminum quick connect leg strap buckles for quicker and easier donning.
- Torso adjustment features no cumbersome web tails.



**PeerCheck™  
PEERCHECK**

- Buckingham PeerCheck™ is a simple, inexpensive and portable alarm system that notifies the worker and crew if a lanyard connection to the bucket truck anchor point has been inadvertently forgotten.
- PeerCheck™ is the equivalent to your seat belt alarm in your car.
- While there are other options currently available, PeerCheck™ is inexpensive, simple to use, and portable.



**The BuckPack™ Pro  
4378**

- Constructed from heavy-duty waterproof vinyl and cordura material.
- 12 separate rows of Molle loops throughout the bag.
- Removable gear garage for all your hardware and devices.
- Numerous storage and access options that will not be found on any other gear bag.

Also available without the Gear Garage™  
**4377**





**BuckAlloy™ American Climber Kit  
A94K7F1G2-FL**

- The BuckAlloy™ American Climber Kit features a pair of hydro-dipped aluminum climbers with a cushion wrap pad, fast strap quick-connect foot straps and a leather gaff guard for added protection.
- GRiP™ (Gaff Ridge Position) Technology keeps gaff pointed towards the heart of the pole greatly reducing cutouts.
- *\*The American Flag Hydro-Dip Finish has the potential to wear quickly if being used in the field.*

Canadian Climber Kit also available  
**A94K7F1G2-FL1**



**Quick Connect Climber Pads  
35021K1**

The quick connect buckle will shave time off your speed climb in a rodeo or simply allow you to step into your gear quicker on the jobsite. Either way this is a major time saver!

**Features:**

- A 4" angled design.
- Metal insert designed to keep the climber shank stationary to reduce chafing to the leg.
- ¾" cushion padding for comfort.
- Quick connect buckle for a simple, easy, and secure attachment.
- Compatible with Buckingham BuckAlloy™ Climbers.



**2-D TrueFit™ Belt**

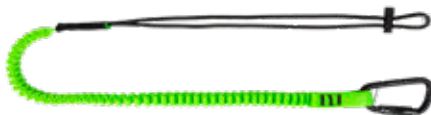
- A patent-pending, fully adjustable, 2-D TrueFit™ belt that allows your dee size to be adjusted between sizes 20-30. This adjustable 2-D belt offers an adjustable dee piece/gut strap that allows the user to customize the size of the belt at any given moment.
- Interlocking (1998C) or Quick Connect Buckles (1998CQ2) that allow the user to retrofit the belt to a harness.
- Lightweight, just 2.5 lbs.!



w/ Interlocking Buckles  
**1998C**



w/ Quick Connect Buckles  
**1998CQ2**



**Buck Tool Tether  
600071**

- Keeps your tools secured and close to you preventing injury, damage, and lost productivity from dropped tools.
- Max. safe working capacity: 15lbs.
- Length: 38" - 51".
- Not for fall arrest.



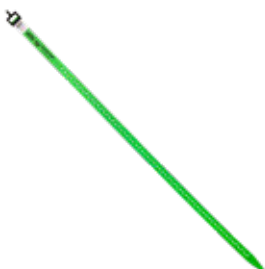
**35 lb. Single Leg Tool Tether  
600072**

- Keeps your tools secured and close to you preventing injury, damage, and lost productivity from dropped tools.
- Max. safe working capacity: 35lbs.
- Length: 33" - 51".
- Not for fall arrest.



**15 lb. Twin Leg Tool Tether  
600073**

- Keeps your tools secured and close to you preventing injury, damage, and lost productivity from dropped tools.
- Max. safe working capacity: 15lbs. per leg.
- Length: 33" - 51".
- Not for fall arrest.



**Buck Strap™  
2508**

- Non-conductive tie-down strap to secure insulated blankets to energized conductors, poles, etc.
- Non-absorbent polyurethane eliminates stored energy related injuries involving bungee cords that may become disconnected and contact the worker.
- Eliminates knife injuries/cuts to insulated goods/residue left by electrical tape.



**Magnet Pouch  
M4**

- Wrap onto 1 ¾" harness webbing or the belt strap on a body belt to allow the user to add on a magnet to store nuts and washers while working.
- Arc Flash Tested materials that meet the requirements of ASTM F887.
- Use as a lanyard parking attachment point for a lanyard hardware when not in use.



# 02 CLIMBERS/PADS/ACCESSORIES



### ComfortLite™ Pole Climber Kit A94K9V-BL

The ComfortLite™ Pole Climber Kit is our lightest and most comfortable climber kit to date! Weighing just 5 lbs. per pair, making it nearly 1 lb. lighter than any existing Buckingham Climber Kits. Ergonomically designed to relieve pressure points and direct pressure to non-sensitive areas of the leg while climbing. This was accomplished using both a dual layer of compression padding and a lightweight plastic cuff that achieve the ultimate fit for comfort.

#### Features & Benefits:

- More than 4 lbs. lighter than the closest competition!
- The ComfortLite™ cuff is a one-piece design removing the need for additional components traditionally seen on our kits.
- New weighted web-end designed to create grip, rigidity, and add weight to the end of cinch strap making it easier and faster to cinch and uncinch pad.
- 4" wide upper strap with a cinch loop ensures a secure and snug fit.
- Patented GRiP™ (Gaff Ridge Position) technology keeps gaff pointed toward the heart of the pole, promoting ease of climbing and a more natural upright position.
- Hook & Loop Foot Straps (21401C-BL).
- BuckViz™ Green Magnetic Gaff Guards (6909M2).
- Gaff length: 1 ¾"
- 350 lb. user weight capacity. Meets ASTM F887 standard.

### HOW DOES IT COMPARE TO OTHER CLIMBER KITS?

**COMFORTLITE™**  
5 LBS.

**BUCKALLOY™ BLACK CLIMBER KIT**  
6.6 LBS.

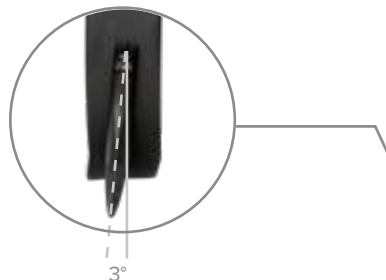
**CLOSEST COMPETITOR**  
9 LBS.



## GRiP TECHNOLOGY™

- Keeps the gaff pointed toward the heart of the pole.
- Aids in preventing cutouts, allowing for better, more comfortable setting of the user's foot and arch.
- Also allows optimum gaff placement on the pole and promotes ease of climbing.

**Buckingham's Patented GRiP (Gaff Ridge Position) Technology™** allows linemen to "climb like the old timers but feel comfy like the new guys," says one Journeyman Linemen who has worn the BuckAlloy™ Climbers with GRiP Technology™.





**BuckAlloy™ American Climber Kit  
A94K7F1G2-FL**

What's more American than being a Lineman? Nothing! So, we wanted to create a climber kit dedicated to the men and women that are the backbone of our nation's infrastructure. We took our classic BuckAlloy™ Aluminum climbers and gave it a complete makeover with the old red, white, and blue by applying an American Flag Hydro-Dip for the ultimate American look!

**Features:**

- Hydro-dipped aluminum climbers with a cushion wrap pad (with or without a cinch loop), fast strap quick-connect foot straps or hook and loop foot straps, and a leather gaff guard for added protection.
- GRiP™ (Gaff Ridge Position) Technology keeps gaff pointed towards the heart of the pole greatly reducing cutouts.

*Canadian Climber Kit also available  
A94K7F1G2-FL1*



**BUCK  
FASTSTRAP™  
CLIMBER KITS  
W/BIG BUCK  
WRAP PADS**

These climber kits with the Buck FastStrap™ features Buckingham's FastStrap™ Quick Connect Foot Straps, BuckGuard™ Retractable Gaff Guards and our Big Buck™ Wrap Pads making this kit ideal for anyone who wants convenience, durability, and comfort all in a lightweight climber kit.



**BuckAlloy™ Climber Kit w/  
FastStrap™ &  
Retractable Gaff  
Guard  
A94K2FG-BL**



**BuckLite™ Titanium  
Climber Kit w/  
FastStrap™ &  
Retractable Gaff  
Guard  
TBG94K2FG-BL**



**Steel Pole Grip™  
Climber Kit W/Big  
Buck™ Wrap Pads  
SBG94K2V-BL**



**BuckAlloy™ Black  
Climber Kit  
A94K1V-BL**

The BuckAlloy™ Black climbers are the most durable aluminum climber in the industry and the most cost-effective lightweight climbers. These climbers provide strong, lightweight comfort for total confidence while climbing. Kit comes with our line of blacked out gear, featuring a hint of BuckViz™ green.

**Kit Includes:**

- BuckAlloy™ Black Climbers.
- Black Cushion Wrap Pads.
- Black Hook & Loop Foot Straps.
- BuckViz™ green magnetic gaff guards.





**BuckLite™ Titanium Black Climber Kit**  
**TBG94K1V-BL**

Weighing in at only 17 ounces, Buckingham's BuckLite™ Titanium Climbers with Patented GRiP Technology™ bring the best of strength, lightweight functionality, and comfort together in a climber that cannot be found elsewhere on the market. BuckLite™ Titanium Pole Climbers were already one of the most popular climbers out, now we have brought the fan-favorite & patented GRiP (Gaff Ridge Position) Technology™ to these climbers!

**Kit Includes:**

- BuckLite™ Titanium Pole Climbers with Grip Technology™
- Black Cushion Wrap Pads w/Cinch Loop.
- Black Hook & Loop Climber Straps.
- BuckViz™ green magnetic gaff guards.



**Steel Pole Climber Kit w/GRiP™**  
**SBG94K1V-BL**

A popular choice steel pole climber that has a contoured shank and an offset stirrup. Features Buckingham's patented GRiP™ technology that keeps the gaff pointed toward the heart of the pole, which reduces cutouts and maximizes comfort. This climber kit comes with our line of blacked out gear, featuring a hint of BuckViz™ green.

**Kit Includes:**

- Steel Pole Climbers w/GRiP™ Technology
- Black Cushion Wrap Pads w/Cinch Loop.
- Black Hook & Loop Climber Straps.
- BuckViz™ green magnetic gaff guards.

COMFORTLITE™  
WRAP PAD

The ComfortLite™ Wrap Pad is a state of the art, lightweight climber pad constructed from a dual layer of compression padding, and a lightweight cuff to accomplish the ultimate fit. Our lightest and most comfortable pad yet!

**Features:**

- 4" wide upper strap features a weighted web-end that creates grip, rigidity, and adds weight to the end of cinch strap making it easier and faster to cinch and uncinch the pad, ensuring a snug fit.
- The dual layer of compression padding, and lightweight cuff were ergonomically shaped to relieve pressure points and direct pressure to non-sensitive areas of leg.
- A ¼" thicker than existing Buckingham Climber Pads.
- The ComfortLite™ cuff is a one-piece design removing the need for additional components traditionally used in current Buckingham Climber Pads.
- No insert necessary.
- Compatible with all BuckAlloy™ Aluminum Climbers.



**ComfortLite™ Wrap Pad**  
**36021C**

BIG BUCK™  
WRAP PAD

The Big Buck™ Wrap Pad is a combination of your two favorite climber pads. We have taken the adjustability of the hook and loop cinch wrap pad, the increased surface area of the Big Buck™ pad and added a moisture wicking Dri-lex lining. Increased surface area to distribute pressure. Thick comfortable pad and moisture wicking Dri-lex lining. Features the adjustability of Hook and Loop Wrap Steel "C-Pad" insert for proper climber shank position. Cinch loop to provide an extra tight fit. Rolled edge to prevent chafing.



**Big Buck™**  
**Wrap Pad**

**BuckAlloy™:**  
**32021C**  
**Steel & Titanium:**  
**3202C**



*Also Available in*  
*Heritage Leather*  
**32021C-BH / 3202C-BH**





**Cushion Wrap Pad w/Cinch  
3502C**

**BuckAlloy™: 35021C**

A hook and loop pad that combined with an angled metal insert designed to keep the climber shank stationary to reduce chafing to the leg. Measures 4" W with ¾" padding



Available in Heritage Leather  
**3502C-BH / 35021C-BH**



**Cushion Wrap Pad w/Cinch  
3500C**

A hook and loop pad that features a cinch loop. No metal insert and measures 4" W with ¾" padding.



**Cushion Wrap Pad  
3500**

A hook and loop pad that features continuous wrap. Comes without a metal insert and without cinch. Measures 4" W with ¾" padding.



**Cushion Wrap Pad w/Insert  
3502**

4" angled design, continuous wrap (ideal for rodeos). Metal insert keeps shank stationary to reduce chafing to the leg. ¾" cushion padding. Maximum adjustability. Rolled edge prevents chafing.



Available in Heritage Leather  
**3502-BH**



**Quick Connect Climber Pad  
35021K1**

4" angled design with metal insert to keep climber shank stationary to reduce chafing to the leg. ¾" cushion padding. Quick connect buckle for a simple, easy, and secure attachment. Compatible with Buckingham BuckAlloy™ Climbers.



**BuckGuard™ 2.0 Retractable  
Gaff Guard  
6911**

Thicker, stronger construction increases size of lip of gaff guard by 2x. Leather protective case reduces risk of breakage or damage to the retractor. Max Retractable length of 22".



**Magnetic Gaff Guard  
6909M2**

Our new magnetic gaff guard features a strong magnet that keeps it securely attached to all manufacturers pole and tree gaffs. Easier to find in the field.



**Snap On Gaff Guard  
6909A**

Easy Snap On Gaff Guard fits all Buckingham replaceable pole gaffs with a 16° angle.



**Universal Gaff Guard  
6909U**

Universal coated wire pole gaff guard made to fit all Buckingham, Bashlin, Klein and Stringer Brooks pole climbers.



**Hook and Loop Climber  
Foot Straps  
21401C**

Soft 1 ¾" nylon, offers increased surface area for added comfort to top and back of foot. Hook and loop cinch provides easy attachment and an extra tight fit. Overall length: 29". *Patented.* Also available w/BuckViz™ Green stitching, model **21401C-BL**.



**Buck Heel Guards  
10C**

The Buck Heel Guards help to prevent gaff wounds in the ankle area when climbing. Manufactured from 2 ply coated PVC belting for durability. NOT compatible with the Fast Strap quick connect buckle foot straps. Measures: 7" L x 5.5" W.

**Large Buck Heel Guards  
10CQ2**

The Buck Heel Guards help to prevent gaff wounds in the ankle area when climbing. Manufactured from 2 ply coated PVC belting for durability. NOT compatible with the Fast Strap quick connect buckle foot straps. Measures: 8" L x 6.5" W.



**Gaff Maintenance Kit  
6025**

Includes smooth single cut file (6058), a new and improved pole gaff gauge (6303) that also gauges CCA gaffs, and finishing hone (6501).



**Climber Footplate for BuckAlloy™ Climbers  
350331**

Compatible w/BuckAlloy™ climbers. Added comfort when standing on a pole. Two plates, one with a rubber sole that faces down, fasten together on the climber stirrup with two screws. Not for use with Steel and Titanium climbers.



**Climber Footplate for Steel/Titanium Climbers  
350333**

Compatible with any steel or titanium climber. Added comfort when standing on a pole. Two plates, one with a rubber sole that faces down, fasten together on the climber stirrup with two screws. Not for use with aluminum climbers.





# 03 WOOD POLE FALL PROTECTION



**Bucksqueeze™ Lite  
486DK4MA**

Buckingham's lightest WPFR device to date! Just 3.5 lbs. Our closest competitor weighs nearly double the weight.

**Features:**

- Nose D-ring:
  - Constructed of a large d-ring section for connection purposes that features a slotted "nose" section to capture the rotosnap to create a rigid connection, which makes ascending and descending the pole easier and more efficient.
  - The large d-ring section creates ease of reconnecting while transitioning, allowing for more efficient transfers. Great for rodeos!
- An Ergonomic aluminum / steel handle that provides maximum control of the device and comfort during long days on the pole.
- An aluminum WebGrab™ that features an extended eye cam efficiently positions the inner strap that creates zero binding and allows for easier replacement of the inner strap.

**EZ Squeeze™  
w/LeverGrab™  
490K3**

**The most advanced WPFR on the market today!**



Buckingham's most advanced EZ Squeeze™ yet now features the all new Buck LeverGrab™ (LAD). The LeverGrab™ was specifically designed to allow users to lengthen without removing weight from the inner rope of the EZ Squeeze™. The new LAD easily adjusts with one hand and is fully adjustable while under load, making length adjustments much easier. This version also comes with Buckingham's new wear-resistant Tough Rope that is constructed with an energy absorbing nylon core, red braided polyester inner core cover (red wear indicator) and an abrasion and heat resistant Technora outer jacket that eliminates the need for a wear guard.

No more jamming of your wear guard! The New Lightweight Design EZ Squeeze™ offers superb Wood Pole Fall Restriction capabilities and allows for the easiest and most functional inner and outer length adjustments in the industry!

Available with an all black Tough Rope; order model **490K5**





**EZ Squeeze™ w/Tough Rope  
490K**

The New Lightweight Design EZ Squeeze™ with Tough Rope offers superb Wood Pole Fall Restriction capabilities and easy one handed outer strap adjustment through use of Buckingham's patent pending WebGrab™ with the New BuckHorn Adjustment Lever. This new component allows EZ™ length adjustment of the outer strap, without the need for the user to remove their weight from the device. With just a flick of the wrist users can adjust the strap in and just tapping the BuckHorn™ to adjust out. Distribution 50" pole circumference. For transmission (90" pole circumference) order model **490KT**.

Available with an all black Tough Rope; order model **490K4**



**EZ SQUEEZE™**

The EZ Squeeze™ offers superb Wood Pole Fall Restriction capabilities and easy one handed outer strap adjustment through the use of Buckingham's patent pending WebGrab™ with the New BuckHorn™ Adjustment Lever. This new component allows EZ length adjustment of the outer strap, without the need for the user to remove their weight from the device. With just a flick of the wrist, users can adjust the strap by simply tapping the BuckHorn™.

**WATCH THE VIDEO:**

See all the features and benefits in action at [BuckinghamMFG.com](http://BuckinghamMFG.com)



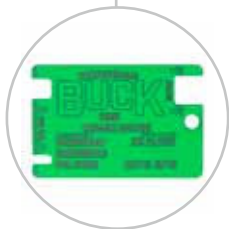
**EZ Squeeze™  
Rope  
490R**

**NOW WITH  
3600 LB  
GATE RATING**



**EZ Squeeze™  
Web  
490DWMS**

Great with:



**BuckGrab™, WebGrab™ & OX Block™  
Friction Bar Gauge  
6308**

This gauge allows you to inspect your BuckGrab™, WebGrab™, and OX Block™ all with a device the size of a business card.

**EZ SQUEEZE™  
MODELS**

MODEL NO.	DISTRIBUTION	TRANSMISSION	CARABINER/ WEB	CARABINER/ ROPE	SNAP/WEB	SNAP/ROPE
490W2	✓		✓			
490RT		✓		✓		
490DRDS	✓					✓



**Buck LeverJust™  
9M8-8**



The Buck LeverJust™ is a lightweight, all aluminum adjustable positioning lanyard. Featuring Buckingham's new LeverGrab™, a one-handed length adjusting hardware device for easy adjustments under load, when climbing or working. Ideal for Ladder work, secondary use on a pole, substation work, or anything involving steel structures. Key features include:

- ½" Kernmantle rope with red warning center to alert user of excessive wear.
- Stitched eye allows user to stow excess tail on a BuckTender or handline hook.
- Easily used with your left or right hand.
- Adjustable when under load—great for rescue and makes length adjustments easier than ever.
- The Buck LeverGrab™ works with ⅞" Kernmantle rope, ⅞" TrebleKern Tough Rope.
- Aluminum snap hook and carabiner reduce overall weight and meet ANSI requirements for 3600 lb. gates.
- Meets all applicable ANSI, OSHA and ASTM standards.

Available sizes: 6', 7', 8', 9', and 10'. Please contact Buckingham for additional sizes or styles. Upgrade to TrebleKern Tough Rope, which is nearly indestructible by ordering part number **92CM8-8**.

**Buck LeverJust™ w/Tough Rope  
92CM8-8**

**TOUGH ROPE eliminates the need for a wear guard!**



Same as our Buck LeverJust™ 9M8-8 except with ⅞" TrebleKern rope. Buckingham's new wear-resistant Tough Rope is constructed with an energy absorbing nylon core, red braided polyester inner core cover (red wear indicator) and an abrasion and heat resistant Technora outer jacket that eliminates the need for a wear guard. No more jamming of your wear guard! Meets all applicable ANSI, OSHA, and ASTM standards.

Available with an all black Tough Rope; order model **92EM8-8**



**BUCKADJUSTER™  
SECONDARIES**



**BuckAdjuster™ w/All Aluminum  
Components & Superfabric  
8' : 9A4+R-8  
6' : 9A4+R-6**

Aluminum snap hook and carabiner meet ANSI requirements for 3600 lb. gates. Twisted eye length adjusting device for proper orientation on the user's body belt. **Don't want a wear guard? Tough Rope option available: model 92C+R-8.** Meets applicable ANSI, OSHA and ASTM standards.

**With a Super Fabric sleeve for protection from excessive wear. Helps rope slide easier on pole or ladder.**



**BuckAdjuster™ w/Steel Hardware and  
Clear Rubber Tube  
8' : 9-8  
7' : 9-7  
6' : 9-6**

A fully adjustable positioning lanyard (APL) that features the BuckGrab™ and a 90 degree twist in the eye of the cam for use with a line workers body belt. The BuckAdjuster™ has a full red core wear indicator. Other features include: user friendly patented Buckingham double locking rope snap, clear protective tube to help provide maximum rope life, and a stitched eye that allows user to minimize length for easy storage.

**Clear plastic tube protects rope when in use.**

**BuckTender  
Single Leg  
2404**



Also Available in  
Heritage Leather  
**2404-BH**

**BuckTender  
Dual Leg  
2404D**



Also Available in  
Heritage Leather  
**2404D-BH**

The BuckTender is a lightweight, compact retractable designed to keep excess slack from the tail of the BuckAdjuster™ secondary lanyard or wood pole fall restriction device out of the way while climbing and working. It also allows the user to make length adjustments without having to remove the tail from a hand line hook or ditty bag. The BuckTender is available with a single leg or dual leg (if user has the tails of both the secondary lanyard and wood pole fall restriction device on one side). The BuckTender will break away when approximately 50 lbs. of force is applied.

See the video: [BuckinghamMFG.com/videos](http://BuckinghamMFG.com/videos)



## SUPERSQUEEZE™

The SuperSqueeze™ provides superb Wood Pole Fall Restriction. With Buckingham's patent pending WebGrab™ the SuperSqueeze™ can be adjusted with just a flick of the wrist. The SuperSqueeze™ can be configured to fit many climbing styles and needs, and it's modular design makes it easy to change out damaged components or straps in the field. Rated to 350 lbs. All straps & rope have red warning center to alert the user of excessive wear. 3600 lb. Gate Rated Hardware. CSA AB Certified.



**SuperSqueeze™  
488DWMS**

## OTHER SUPERSQUEEZE™ FEATURES

Other features include:

- Buck WebGrab™ provides easy one handed adjustment of the brown strap & green strap
- Can be configured for right handed or left handed individuals
- One disconnect to climb over an obstruction
- Lightweight design: Rope model = 4.5 lbs. & Web model = 4.85 lbs.
- Meets ASTM F887-13 including dry pole, wet pole, conduit & iced pole
- Modular design for easy strap change out can easily change out worn or damaged components or straps in the field
- Can easily be configured for rope or web strap



**SuperSqueeze™  
488W2**

Carabiners allow inner web strap to be removed for easy field replacement or to move the web grab from left hand to right hand.



**SuperSqueeze™  
488DRDS**

Snap hooks on rope inner not removable so they won't get misplaced or lost.



**SuperSqueeze™  
488R**

Rope inner allows for easier movement of SuperSqueeze™ up and down the pole. Superfabric wear guard on rope decreases wear and moves against the pole easier. Rope has red wear center for easier inspection.



**SuperSqueeze™  
488W2Q3**

Web inner strap is abrasion resistant and moves easily across the pole and through the hardware. Has red wear center for easier inspection.

## SUPERSQUEEZE™ MODELS

MODEL NO.	DISTRIBUTION	CARABINER/ WEB	CARABINER/ ROPE	SNAP/WEB	SNAP/ROPE
488W2	✓	✓			
488W2Q3	✓			✓	
488R	✓		✓		
488DRDS	✓				✓

Build your own EZ Squeeze™ or SuperSqueeze™ at [BuckinghamMFG.com](http://BuckinghamMFG.com)



# 04 BODY BELTS

(All Buckingham 4-D Body Belts are Patented)



## ADJUSTABLE 4-D BODY BELTS

Watch the video on how to adjust by scanning this code



The revolutionary Patent Pending Adjustable 4 D-Ring Body Belt™ offers an adjustable man rated upper belt strap and an adjustable lower work positioning D-piece that allows the user to customize the size of the body belt at any given moment. Users will now have a belt that can adjust three to four D sizes. The Adjustable Body Belt™ takes all of the features of our popular Short Back Mobility Belt™ and builds them into this new game-changing belt. This belt is perfect for those who work in areas of the country where there are large temperature swings – when one part of the day or season you could be wearing only FR pants and shirt, then next you could be wearing heavy duty Carhartts. Having an adjustable belt allows the user to adjust for comfort and practicality. This belt is also great for those entering the trade who may either lose weight during line school or gain weight throughout their career. *All Buckingham 4 D Body Belts are patented.*

### ADJUSTABLE BODY BELT SIZING CHART

Belt Size	S	M	L	X
D-Size	20, 21, 22, 23	23, 24, 25, 26	26, 27, 28, 29	29, 30, 31, 32, 33



#### Adjustable Short Back Belt™ 20192CM-SIZE

- 4 stacked & fully floating D-Rings.
- The 4 D-Rings support and make the use of wood pole fall restriction devices extremely simple. We recommend the EZ Squeeze™.
- Fully padded 7" short back makes long days more comfortable. High-quality and ultra-soft leather makes for that instant "broke-in" feel.
- Features four sizes – small, medium, large, X-Large.

Also Available in Heritage Leather  
**20192CM-SIZEBH**



**6-D Adjustable Body Belt  
20122CM1**

The revolutionary patented multi-hole D-ring provides numerous points of connection for both your primary (WPFR) and secondary lanyard (s). The numerous points of connection allow the user to climb, work, and transition in several different configurations. 2 ½" offset connection points prevent the WPFR device and secondary lanyard from binding on each other.

**Features:**

- Offers an adjustable man-rated belt strap and an adjustable work positioning D-piece that allows the user to customize the size and feel of the belt.
- Low profile construction of a 2-D Body Belt, with the functionality of a 4-D stacked Body Belt, reducing surface area and weight overall.

Also available with a Quick Connect Belt Strap!  
Model **20122CKM1**



**Adjustable TriFit™ Short Back Belt  
20192C3M**

A truly one-of-a-kind and fully adjustable belt, now equipped with 3 forms of adjustment. The patent pending Adjustable TriFit™ Short Back Belt allows the user to easily adjust both the upper and lower sets of D-rings AND offers an adjustable man-rated upper belt strap.

**Features:**

- Larger Aluminum upper D-rings reduce the overall weight of the belt and make it easier to connect a secondary lanyard for transitioning.
- Perfect for those who work in areas of the country where there are large temperature swings – when one part of day or season you could be wearing only FR pants and shirt, then next you could be wearing heavy-duty Carhartt's. Having an adjustable belt allows the user to adjust for comfort and practicality.



**Adjustable Mobility Belt™  
20182CM-SIZE**

- The 4 D-Rings supports the use of wood pole fall restriction devices, like the New Buckingham EZ Squeeze™.
- 4 stacked & fully floating D-Rings.
- Fully padded 9" high back wrapped in high-quality ultra-soft leather for that instant "broke-in" feel.
- The Buck Mobility™ offers a man-rated upper belt strap that is bound to the lower work positions strap by 1 ¾" web.
- Features four sizes – small, medium, large, x-large



**2-D TrueFit™ Belt  
1998C**

A **Patent-Pending**, fully adjustable, 2-D TrueFit™ belt that allows your dee size to be adjusted between sizes 20-30. This belt can be retrofitted directly to any 'H' or 'X' style full-body harness. We suggest pairing this TrueFit™ Belt with one of our popular TrueFit™ harnesses, to create a fully adjustable body belt/harness combo!

**Other features:**

- Quick connect belt strap buckle for quick and easier donning.
- Interlocking buckles that allow the user to retrofit the belt to a harness.
- Steel d-rings.
- Lightweight, just 2.5 lbs.!
- Narrow back pad measuring 4 ¼" wide features 2 layers of FR material constructed with hook and loop connecting material that aids in the dee size adjustment.



Also available with quick connect buckles to retrofit belt to harness, order model **1998CQ2**

**Applications:**

- Transmission tower
- Lattice tower
- Ladder
- Bucket truck (when retrofitted to harness)





# 05 OX BLOCK™ & RIGGING



## OX BLOCK™

The **OX BLOCK™** (*patented*) is a rope snatch block that features an integrated friction bar that can be used for hurtman rescue, lowering loads, snubbing loads, and raising heavy loads. It allows the rigging professional to handle loads with greater control. When lowering loads force is transferred from the worker to the **OX BLOCK™**. The **OX BLOCK™**, with greater working load limits, is designed to replace standard handline blocks, parted blocks and various snatch blocks.



**OX BLOCK™  
W/SWIVEL EYE  
50061**



**OX BLOCK™  
W/CLEVIS TOP  
& HOOK  
50062C**



**OX BLOCK™  
W/CLEVIS TOP  
& OX HORN™  
50062D**



**OX BLOCK™  
W/BUCK PIN  
50063**  
Allows user to easily  
change attachments!



# OX ACCESSORIES



**Buck Side Swivel™  
Single Sheave  
50071B1**

Heavy duty aluminum pulley with a single side swivel plate and swivel eye. Side plates are ideal for use with progress capture Prusik. 5/8" rope capacity.  
**WLL: 2500lbf**



**Buck Rigger™  
Double Sheave  
5007R2**

Double sheave pulley with a swivel side plates and swivel eye. 1/2" rope capacity.  
**WLL: 1800lbf**



**Buck Rigger™  
Single Sheave  
5007R1**

Single sheave pulley with a swivel side plate and swivel eye. 1/2" rope capacity.  
**WLL: 1800lbf**



**Buck Side Swivel™  
Double Sheave  
50071B2**

Heavy duty aluminum pulley with double side swivel plates and swivel eye. Side plates are ideal for use with progress capture Prusik. 5/8" rope capacity.  
**WLL: 2500lbf**



**Clevis Side Swivel™  
Single Sheave  
50072B1**

Same features as the regular Buck Side Swivel™ with the added benefit of the clevis top for use with progress attachment options and easier change out of accessories.  
**WLL: 2500lbf**



**Clevis Side Swivel™  
Double Sheave  
50072B2**

Same features as the Clevis Side Swivel™ single sheave in a double sheave design.  
**WLL: 2500lbf**



**Steel Double Action  
Rigging Carabiner  
5005S5**

Steel double-action carabiner w/MBS rating of 12,000 lbs. (55kN) and WLL of 2,500 lbf. (11kN). Rated to meet ANSI Z359 standards & ANSI A10-48.



**Buck Pin  
223892R**

A SLIC Pin specifically customized to fit the OX clevis top. The Buck Pin allows the user to add or remove accessories more quickly and easily than the shoulder bolt does.



**10 MM  
Capture Prusik  
705A1-36**

10mm Prusik with an aluminum ring. Ideal for a progress capture when using Buck Side Swivels™ as mechanical advantage.



**OX TAIL™  
39078TAG1-4  
4' x 5/8" adjustable sling.  
39078TAG1-7  
7' x 5/8" adjustable sling.**

**WLL:  
Straight 3200 lbf.  
Choker 2560 lbf.  
Basket 6400 lbf.**



**30" 8MM Progress  
Capture Prusik  
P9J8V-10-30S**

A 30" eye to eye Prusik made of 8mm Dyneema rope.



**BuckLink™ Sling  
3903S-6**

The BuckLink™ is made of lightweight Spectra material. Each loop is rated to 5,000 lbs. With 16 loops, users can adjust the sling to form a rated anchor of any size.



**OX HORN  
31291B**

2" gate opening. Replaces a non-rated "meat hook". WLL of 2500 lbs. w/gate closed. 1000 lbs. WLL w/gate open. For use on the Ox Block™ w/ clevis top.



**OX HOOK™  
2406S**

Features a 3600lbf rated locking gate making rescue situations more efficient. WLL of 2500lbs with gate closed. 1000 lbs. WLL with gate open.



**Rigging Hook  
223814R**

A hook latch meant strictly for attachment purposes, not to carry a load. Has a working load limit of 1 ton.



# 06

## BUCKETS / BAGS / POUCHES & ACCESSORIES



### THE BUCKPACK PRO™

#### The BuckPack™ Pro 4378

After years of development, we are proud to introduce a truly one of a kind gear bag that has been designed from the ground up to be the most versatile and feature packed gear bag available on the market!

#### Features:

- Constructed from heavy-duty waterproof vinyl and cordura material.
- High-grade zippers.
- 12 separates rows of Molle loops throughout the bag.
- Removable gear garage for all your hardware & devices.
- Numerous storage & access options that will not be found on any other gear bag including:
  - Massive front pocket to easily access gear.
  - Large upper pocket for helmet, gloves, and other gear you may want to easily access.
  - Rope access pocket allows you to access your rope without having to empty the bag of it contents. Great for access in the rain!
  - Pockets for climbers to save space & prevent accidental puncture of bag or gear.
  - Top access pocket w/drawstring closure to store/separate gear in top portion of bag.
  - Shoulder strap storage pocket.
  - Large back pocket for laptops or documents.



## BUCK BIG MOUTH™ BAG

The Buck Big Mouth Bag is a new and improved equipment bag with an extended wide mouth (15 ½" x 22") to make it easier and faster for workers to store all of their PPE, gear, tools, and other items in their bag with ease. No more struggling to get your essentials into your bag and no more fighting to get it closed. To order with wheels, add **W1** to P/N.



**Buck Big Mouth™ Bag**  
15 ½" Opening

**Standard Bag**  
10" Opening

**Measures:**  
22"L x 15.5"W x 19"H



**Buck Big Mouth Bag  
(Safety Green)**  
47333G9R5S



**Buck Big Mouth Bag  
(Black)**  
47333B3R5S

Lockable option w/two lock holes at left and right of bag closure for pad lock or cable lock available.  
*\*\*Pad lock shackle must have height greater than 1 ¼". Pad lock / cable lock not included.*

**Lockable Big Mouth  
Bag (Safety Green)**  
47333G9L3R5S



For a Lockable Big Mouth Bag in black, use PN **47333B3L3R5S**

## BUCKPACK™ EQUIPMENT BACKPACK

The BuckPack™ Equipment Backpack is large enough to carry all the equipment of a traditional tool bag. With a hard plastic bottom. All pockets have hook and loop closures. Features padded shoulder straps with adjustable chest strap. Zipped raw flap is designed to keep water out of bag. Carry handles at top of bag.



**Available with  
Wheels and Pull Handle!**  
4470G9W1

### SMALL



**Front Pocket  
Measures::**  
12"L x 12"W

**Side Pocket  
Measures::**  
10"L x 6"W



**BuckPack™  
Equipment Backpack  
4470G9**

**ORANGE:**  
4470O1

**BLACK:**  
4470B3

### LARGE



**Front Pocket  
Measures::**  
14"L x 15.5"W

**Side Pocket  
Measures::**  
20"L x 7"W



**BIG BuckPack™  
Equipment Backpack  
4471B3**

**ORANGE:**  
4471O1

**SAFETY GREEN:**  
4471G9





**Double Back Holster  
42266-BL**

Remains rigid & prevents tight fitting tools from bending and buckling the back of pouch when removing tools. Features 5 pockets and a 2-way knife snap. Measures: 10.75" L x 8" W



Also Available in  
Heritage Leather  
**42266-BH**



**Short Back Double Back Holster  
42266S-BL**

This model features a short back, 5 pockets, and a 2-way knife snap. Measures: 9.25" L x 8" W



Also Available in  
Heritage Leather  
**42266S-BH**



**Double Back Holster  
42666-BL**

This model features 5 pockets, 2 way knife snap and a 6" knife sheath attachment.

Measures: 10.75" L x 8" W



Also Available in  
Heritage Leather  
**42666-BH**

VINYL NUT &  
BOLT BAG

Vinyl, lightweight, easy to attach/detach from body belts with our snap and D-Ring connection.



**Vinyl Nut & Bolt Bag  
4570G9**

CANVAS NUT &  
BOLT BAG

Canvas, lightweight, easy to attach/detach from body belts with our snap and D-Ring connection. Reinforced top, drain holes and attachment straps. No bottom corners to trap small parts. Measures 10" D x 9" W.



**BuckViz™ Canvas  
Nut & Bolt Bag  
4570G4**



**Plain Canvas Nut &  
Bolt Bag  
4570**



**Black Canvas Nut &  
Bolt Bag  
4570B2**



**Black Nut & Bolt Bag  
w/Magnet  
4570B2M2**




## MINI BUCKETS

Buckingham's new mini bucket now features a high-vis green color. Perfect for loose tools, connectors, nuts and other small parts and hardware. Another popular use is for a mini trash can in your truck or on your desk. Great for safety awards.

 Plain Canvas  
1231

 Black  
1231B4

 Camo:  
1231C6

 Digital Camo  
1231C9



Mini Bucket  
1231G4



Replacement Handle: 1233

Rodeo  
Mini Bucket  
1231G4Q30



14" X 6.5" Canvas Bucket  
12169H1K

A heavy duty bucket with a PVC bumper to keep the bucket from tilting and a molded rubber bottom. Has 12 inside pockets and measures 14" L x 6 1/2" W x 10" H. For bucket without bucket hooks, order model **12169H1KL**.



Canvas Bucket  
1215G9

A vinyl coated nylon bucket with a solid continuous PVC ring in the top and a molded rubber bottom. Bottom is made from high impact thermoplastic rubber for long lasting durability under the toughest working conditions. Polyester rope and swivel snap allows the tool bucket to be suspended.



BUCKET HOOKS

For more info on our assortment of bucket hooks please visit: [Buckinghammfg.com/bucket-hooks](http://Buckinghammfg.com/bucket-hooks).

PRODUCT #	SIZE	MATERIAL	FITS BUCKET SIZE	WORKING LOAD LIMIT
2410 	3/4"	Nylon	2.5" Bucket Lip	40 lbs.
2410G 	3/4"	Nylon	2.5" Bucket Lip	40 lbs.
2401 	11/16"	Polymer	2.25" Bucket Lip	100 lbs.
2401-3 	11/16"	Yellow Polymer	3" Bucket Lip	150 lbs.
2403 	5/8"	White Nylon	3" Bucket Lip	150 lbs.
2405 	1/2"	Polymer	3" Bucket Lip	100 lbs.
5034 	3/4"	PVC	3" Bucket Lip	150 lbs.
5058 	5/8"	PVC	Standard Lip Baskets	100 lbs.
5134 	3/4"	PVC	-	200 lbs.
5334 	3/4"	PVC	3" Bucket Lip	150 lbs.
5358 	5/8"	PVC	3" Bucket Lip	100 lbs.
5434 	3/4"	PVC	4.5" Bucket Lip	150 lbs.

## BUCK SKINNING KNIVES

Buckingham's wide selection of skinning knives are well known for their strong, durable and long-lasting blades. The blade stays sharp, and when sharpening is needed the honing stone can put a sharp edge on the edge of the blade with ease.



**Skinning Knife w/Red Handle  
7089**  
Overall Length: 8.5"



**Knife w/Ergonomic Handle  
7090**  
Overall Length: 8.25"

## BUCKINGHAM ERGOBLADE™

The Buckingham ErgoBlade™ Lineman's Skinning Knife. Has a 1 ¼" diameter black or high-vis green rubber handle that fits comfortably in a gloved hand.

### Features:

- Round handle allows the user to create the proper cutting angle by rotating the knife within the hand instead of constantly, and repetitively, turning the wrist.
- The 5 ¾" long handle extends beyond the palm of the hand reducing the force needed to secure the knife while skinning cable.
- Textured rubber handle allows for an increased grip while working in inclement weather.
- Overall Length: 10"



**ErgoBlade™ w/Black Handle  
7091**



**ErgoBlade™ w/High-Vis Handle  
7091G**



**Goat Wrench  
7071**

Made from alloy steel to withstand hard usage. The jaws are designed so that a nut, bolt or pipe is drawn further into the throat as pressure is applied.



### BUCKLUBE™ BUCKLUBE

Specially formulated for cleaning, lubricating and maintaining hardware & rubber goods.

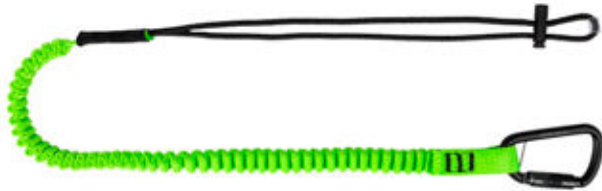
### Uses & Features:

- Tested and approved to ASTM F711 for cleaning fiberglass pruning poles and hot sticks.
- Cleaning solvent & lubricant for metals, plastics & rubber.
- Protects against oxidation & corrosion caused by moisture & UV rays.
- Non-flammable formula.
- High dielectric strength (22kv).
- Leaves a thin coat of silicone lubricant (will NOT harm EPDM rubber).
- Removes bloom from rubber goods.





# TOOL TETHERS



## Buck Tool Tether 600071

- Stretch cord surrounded by tubular nylon webbing with lock stitching at both ends for extra security.
- Twist locking aluminum carabiner (5005P) on one end.
- Adjustable tool loop on the other end.
- Maximum safe working capacity: 15 lbs.
- Length: 38 in – 51 in.
- Helps prevent injuries to workers below due to dropped tools.
- Conforms to ANSI/ISEA 121-2018
- NOT for fall arrest.



## 35 lb. Single Leg Tool Tether 600072

- Stretch cord surrounded by tubular nylon webbing with lock stitching at both ends for extra security.
- Twist locking aluminum carabiner (5005P) on one end.
- Adjustable tool loop on the other end.
- Maximum safe working capacity: 35 lbs.
- Length: 33 in – 51 in.
- Helps prevent injuries to workers below due to dropped tools.
- Conforms to ANSI/ISEA 121-2018
- NOT for fall arrest.



## 15 lb. Twin Leg Tool Tether 600073

- Stretch cord surrounded by tubular nylon webbing with lock stitching at both ends for extra security.
- Twist locking aluminum carabiner (5005P).
- Adjustable tool loop on each leg end.
- Maximum safe working capacity: 15 lbs. for each leg.
- Length: 33 in – 51 in.
- Helps prevent injuries to workers below due to dropped tools.
- Conforms to ANSI/ISEA 121-2018
- NOT for fall arrest.



## Tool Holder Strap 600081

A tool holder strap that is designed to be girth hitched or cinched (using the safety green surgical tube slide) to the handle of a battery-operated tool to allow the tool to be stored on an accessory / bucket hook or used as a wristlet.



## Arc Rated Tool Holder Strap 600081K

An arc rated tool holder strap that is designed to be girth hitched or cinched (using the pre-tied knot) to the handle of a battery-operated tool to allow the tool to be stored on a bucket hook or used as a wristlet.



**Chainsaw Lanyard w/Steel Ring Attachment  
25G12A**

Features a 1 3/4" ring for suspension when not in use, an elastic bungee designed for safety and convenience that measures 48" and a tear away safety pack that activates when 200 lbs. of force is applied. 1 1/8" steel ring saddle end attachment.

**Chainsaw Lanyard  
w/Bronze Snap Attachment  
25G13A**

Features a 1 3/4" ring for suspension when not in use, an elastic bungee designed for safety and convenience that measures 48" and a tear away safety pack that activates when 200 lbs. of force is applied. 1 1/8" bronze snap saddle end attachment.



**Chainsaw Lanyard  
w/Carabiner Loop Attachment  
25G14A**

Features a 1 3/4" ring for suspension when not in use, an elastic bungee designed for safety and convenience that measures 48" and a tear away safety pack that activates when 200 lbs. of force is applied. 3/4" carabiner loop saddle end attachment.



**Gated Handline Carrier  
2402G**

Buckingham's Gated Handline Carrier © takes our previous handline carrier (2402) and improved upon it in several ways. The carrier is made of Polymer and includes a hole to easily secure it to the body belt with a bolt or zip tie (zip tie included). The carrier will straighten when approximately 25 lbs. of pressure is applied and up to 35 lbs. when the handline gate is closed, allowing the handline to pull free.



**Heavy-Duty Gated Handline Carrier  
2402GH**

The Heavy-Duty Gated Handline Carrier is a rigid handline carrier designed to breakaway when approximately 33 lbs. of pressure is applied. With the gate locked, the breakaway strength increases by 10 lbs. Ideal for transmission linemen or when using the OX BLOCK™ and related accessories.



**BuckCarrier™ Chainsaw Carrier  
2402B**

The BuckCarrier™ is a lightweight (2.4oz) aluminum carrier designed to store your chainsaw on your saddle. It is the lowest profile chainsaw hook on the market and its compact design makes it nearly impossible to get caught on limbs and branches like other chainsaw carriers on the market. Can be used to carry practically anything!



# OFFICIAL TRAINING PARTNERS

Buckingham Manufacturing is proud to work with the following training partners to provide training on products and systems that we offer.



**SAFETY ONE**  
TRAINING

## SAFETY ONE TRAINING INC.

Safety One Training was founded with the vision to bring safety and rescue training services to snowcat operators. Since then, the company has grown, and the training programs have expanded into other areas such as utility, telecommunications, governments and military industries, as well as independent contractors. Safety One Training has become a leader in fall protection.

[www.safetyoneinc.com](http://www.safetyoneinc.com)



**ArborMaster**<sup>®</sup>

See You At The Top!<sup>®</sup>

## ARBORMASTER

ArborMaster Training has been the leader and premier provider of private in-house hands-on customized training programs and regional open-enrollment courses through their innovative Safety, Skill and Productivity education and training for people and organizations who work with, in, and around trees.

[www.arbormaster.com](http://www.arbormaster.com)



**NORTH AMERICAN**  
TRAINING SOLUTIONS

## NATS

NATS mission is to empower people to live and work safely, creating a positive impact, and to be the best version of themselves by inspiring a culture of safety through leadership, sustainability, and integrity. They offer training and educational programs, share knowledge, resources, and tools to increase safety and efficiency in the workplace.

[www.northamericantrainingsolutions.com](http://www.northamericantrainingsolutions.com)



## TOWER SAFETY

Tower Safety and Rescue provide courses with instructors who provide extensive knowledge in rigging, climbing, rescue, and installation. They have SPRAT Level 3 trainers and offer the best of all the rope access industries. Tower Safety is a Cell Tower, SPRAT, and Confine Space and Rescue Safety Training Company providing excellent training in safety and rescue learn, lead and live.

[www.towersafety.com](http://www.towersafety.com)



BUCKINGHAM  
**BUCK**  
1896