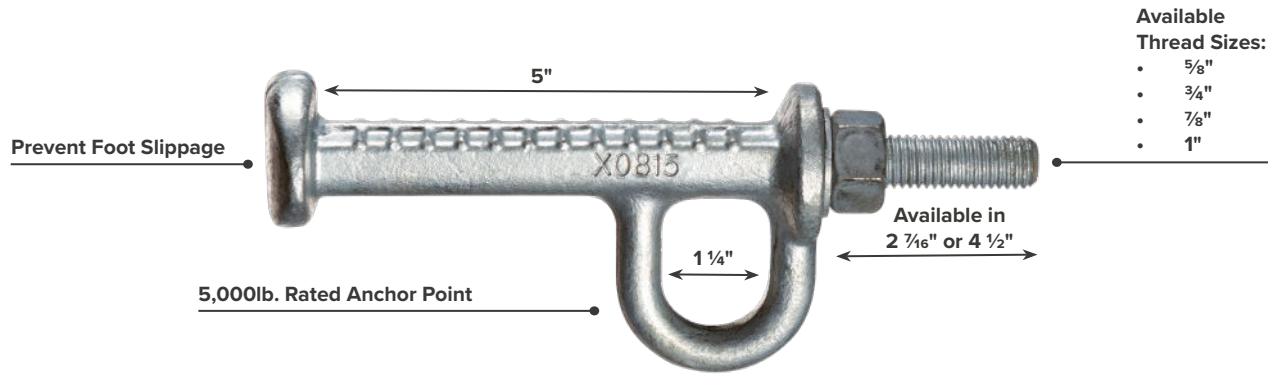


BUCKBOLTS

CLIMB TOWERS SAFELY AND EFFICIENTLY



Available Thread Sizes:

- 5/8"
- 3/4"
- 7/8"
- 1"

BuckBolts & Flanges

Buckingham offers a wide variety of step bolts and flanges designed to replace/retrofit existing step bolts with a 5,000lb. rated anchor point. BuckBolts are hot dip galvanized to add a zinc coating that protects against corrosion in the field. Also designed with a large head at the end of the step bolt to prevent foot slippage. Step area is 5", and the anchor eye diameter is 1 1/4" .

Benefits:

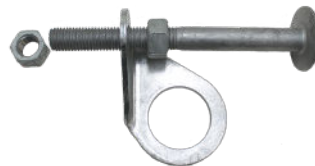
- Safety - safest method to climb a tower, particularly for the first man up.
- Efficiency – On certain structures, angle iron can be very far apart, making it difficult to reach. Often times, one must climb up to connect then climb back down to disconnect the other leg of the lanyard. This takes twice the amount of climbing which is time consuming, tiring, difficult to do, and can lead to preventable injuries. With BuckBolts, the user cuts their work in half.
- OSHA Compliance – Compliant with the new OSHA requirement 1910.24(a) (7) that states each step bolt installed on or after 1/17/2017 must be capable of supporting at least four times its maximum intended load. Anchorage points on BuckBolts and Flanges are rated to 5,000lbs.

BUCKBOLT W/ANCHOR



MODEL	THREAD DIAMETER	THREAD LENGTH
3058	5/8"	2 7/16"
3075	3/4"	2 7/16"
3010Q	1"	2 7/16"
3010Q-4.5	1"	4 1/2"
3058Q3-4.5	5/8"	4 1/2"
3075Q5-4.5	3/4"	4 1/2"
3078Q	7/8"	2 7/16"
3078Q-4.5	7/8"	4 1/2"

RIGHT FLANGES



MODEL	BOLT HOLE
30R-F1	5/8"
30R-F2	7/8"
30R-F3	3/4"
30R-F4	1"

LEFT FLANGES



MODEL	BOLT HOLE
30L-F1	5/8"
30L-F2	7/8"
30L-F3	3/4"
30L-F4	1"



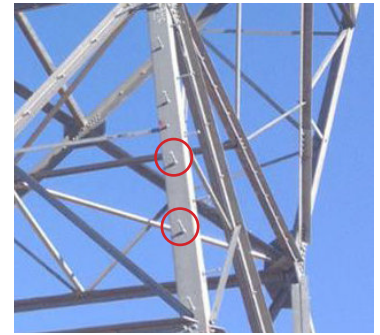
Towers can be difficult to climb, particularly for the first man up, for several reasons:



1. On certain structures, angle iron can be very far apart, making it difficult to reach. Often times, one must climb up to connect then climb back down to disconnect the other leg of the lanyard. This takes twice the amount of climbing which is time consuming, tiring, difficult to do, and can lead to preventable injuries. With BuckBolts, the user cuts their work in half.



2. Many pieces of angle iron are not rated to use as fall protection anchorages.



3. Standard, non-BuckBolts are not engineered to use as fall protection anchorages.



4. You can still fall more than 2 feet if rigged incorrectly using a work positioning lanyard on a vertical leg.



5. On some towers, the angle iron is too large for even the Big Buck Snap to fit around.

These design issues make it very difficult and dangerous for workers to climb, even before they get to their work position to do the work.

BuckBolts Make Climbing Easier:

- There is an engineered, fall protection rated anchorage point at each step along the climbing route allowing for quick, easy connection.
- The connection is eye level while climbing allowing for easy connection and inspection of the anchorage.
- The anchorage points allow for easy access for a rescue anchorage point.
- The worker can access the work position without being fatigued.
- Cost-effective

