



TOOLS FOR UNDERGROUND & CONFINED SPACE FALL PROTECTION & RESCUE



BUCKINGHAM BUCK 1896

For over 120 years, Buckingham Manufacturing has been the world's leading and most trusted manufacturer of equipment and tools for major electric utilities, telecommunications companies, wireless and cable providers, and arborists. Our customers work both above and below ground and we pride ourselves in manufacturing the highest quality and most innovative products on the market, right here in America.

Buckingham MFG
1-11 Travis Avenue
Binghamton, NY 13904-1690, USA

+1 800 937 2825

BuckinghamMFG.com

Sales@buckinghammfg.com

facebook.com/buckinghammfg
instagram.com/buckingham_mfg
twitter.com/buckingham_mfg
youtube.com/buckmfg
google.com/+buckinghammfg

CONTENTS

*This mini catalog is a sampling of the thousands of products we manufacture.
For our full line, please visit BuckinghamMFG.com*

- 04** HARNESSES
- 06** LIFELINES
- 08** OX & ACCESSORIES
- 10** EQUIPMENT BAGS, BUCKET & STORAGE
- 15** TOOLS & HARDWARE

Buckingham's special niche is to develop products to fit our customers' exact needs. Our real specialty is listening to the exact wants and needs of those industries we support, helping them find a solution to their problem, and then building a high-quality and reliable product with ZERO defects. If you have an interest in customizing any product you see in this catalog or building something to meet your exact specifications, please call 1-800-YES-BUCK and we can take you through that process. Customization is something we thrive on and is the exact reason why we are the world's leading manufacturer of fall protection equipment.



All harnesses on the following pages are accompanied by a symbol that indicates whether it meets the ASTM F887 Arc Flash Requirements, has a sternal attachment point and whether it is intended for fall restraint, fall arrest, retrieval or work positioning.



FALL
RESTRAINT



FALL
ARREST



WORK
POSITIONING



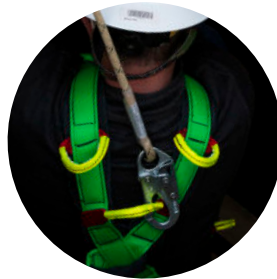
RETRIEVAL
SYSTEM



STERNAL
ATTACHMENT



MEETS ASTM F887
REQUIREMENTS



**BuckOhm™ Confined
Space Harness
68M9EQ2**



ASTM
F887



RETRIEVAL
SYSTEM



STERNAL
ATTACH.



FALL
ARREST



FALL
RESTRAINT

**The BuckOhm™ Bucktriever™
603A8Q12**



ASTM
F887



RETRIEVAL
SYSTEM



STERNAL
ATTACH.



FALL
ARREST



FALL
RESTRAINT

Features Include:

- 9KV rated Dielectric hardware (Chest D-Ring rated at 3KV).
- Lightweight, comfortable, breathable, and most importantly, functional back pad.
- Web loops at the dorsal location.
- Lanyard parking loop.
- Quick connect leg straps for easy donning.
- 5 reflective retrieval loops aiding rescue in dark spaces. Shine light on reflective loops to find a place to attach a rescue line.
- Back/shoulder pads provides comfort and ease when donning.

Features Include:

- 9KV rated Dielectric hardware.
- Lightweight, comfortable, breathable, and most importantly, functional back pad.
- Web loops at dorsal and sternal locations.
- Lanyard parking loop.
- Quick connect leg straps for easy donning.
- 3 reflective retrieval loops located across the back.
- 2 additional reflective loops located on the hips to maneuver the injured worker into a better position for rescue.
- Back/shoulder pads provides comfort and ease when donning.





The Economy 'X' Style BuckTrievers™ 603S8Q211



Features Include:

- Web loop at sternum.
- Web loop dorsal attachment.
- Quick Connect legs straps for easy donning.
- 3 reflective retrieval loops located across the back.
- 2 additional reflective loops located on the hips to maneuver the injured worker into a better position for rescue.
- Padded leg and shoulder straps.
- Use in conjunction with Buck's Manhole rescue lifeline kits and Confined space retrieval systems.



The Economy 'H' Style BuckTrievers™ 63936Q



Features Include:

- Hook & loop chest strap.
- Pigtail dorsal attachment.
- Quick Connect legs straps for easy donning.
- 4 reflective retrieval loops located across the back.
- 2 additional reflective loops located on the hips to maneuver the injured worker into a better position for rescue.
- Use in conjunction with Buck's Manhole rescue lifeline kits and Confined space retrieval systems.
- Lanyard parking attachment.



Confined Space Rescue Strap 82

Features Include:

- Keeps the victim in an upright position.
- Easily donned by the rescuer or victim to facilitate rescue.
- Three different loops for half hitching strap around the victim.
- Straps that go around the victim's legs to prevent slip through.
- Two loops at each end of the strap used for raising the victim.

NEW



Permanently attached BuckSteps™ are available on almost all Buckingham harnesses. Please contact our customer service team at 1-800-YES-BUCK or sales@buckinghammfg.com.

BuckStep™ 2.0 105RSDK1

Features Include:

- Two-part design allows for a more compact design and provides easier length adjustments compared to the one-part BuckStep™ system.
- New adjustment buckles located at harness for easier length adjustments and added strength.
- Girth hitches to the harness for easy attachment.
- The ring and connector design aids in connection of the two trauma straps.
- Small/compact pouches, just 4 1/2" x 2" in size.
- Lightweight - 3.4 oz. (each), 6.8 oz. (pair).
- Meets ASTM F887.

NEW

BUCKLUBE

KEEP OUT OF REACH
OF CHILDREN.

If inhaled or ingested,
please call
1-800-255-3924



BUCKLUBE BUCKLUBE

New BUCKLUBE specially formulated for cleaning, lubricating and maintaining hardware and rubber goods. Buckingham products should be lubricated weekly or as often as required to maintain smooth operation. Liberally spray surface to be cleaned and wipe with a clean, dry cloth.

Features Include:

- Cleaning solvent and lubricant for metals, plastics and rubber.
- Protects against oxidation and corrosion caused by moisture and UV rays.
- Non-flammable formula/high dielectric strength (22kV).
- Leaves a thin coat of silicone lubricant (will NOT harm EPDM rubber).
- Removes bloom from rubber goods.



Made in the USA



WARNING: Cancer and Reproductive Harm For All Products on Page – www.P65Warnings.ca.gov



02 LIFELINES/ACCESSORIES/ WINCHES

CONFINED SPACE RESCUE KIT

See the video:
[BuckinghamMFG.com/
videos](http://BuckinghamMFG.com/videos)

This unique systems allows for a rescue to be accomplished without having to send additional personnel into the hazardous area. Entrant suited with a full body harness (model **603S8Q211**) enters the confined space with or without being tethered.

For non tethered rescue, the attendant/rescuer uses the rescue line system (**39SAM13Q9-30**). The rescue line equipped with a carabiner is attached to a 16' telescopic pole via the telescopic pole adapter (model **40**). The adapter releases the carabiner once the rescuer locates one of four reflective rescue loops, "hooks" into a loop and pulls back on the pole. The rescue line is then tied on

to the winch and the rescuer then proceeds to raise the victim.

For a tethered rescue, the attendant/rescuer uses the rescue line system (**39SAM13Q3-30**). Entrant enters the confined space with a lifeline (**39SAM13Q1**) attached. The lifeline is attached to the manhole guard/rescue winch with a specially designed breakaway assembly. This device will release upon impact such as that of a vehicle which has entered the work zone and strikes the manhole guard. For rescue, the attendant/rescuer attaches the ascender to the winch line and proceeds to raise the victim. *Systems ideal for use with the BuckTrievers™*



**Non-Tethered Confined
Space Rescue Kit
105Q2-30**

INCLUDES:

- One manhole guard.
- One winch.
- One 16' telescopic fiberglass pole.
- One **39SAM13Q9-30** Rescue Line Kit (Two 30' lifelines, model **40** telescopic pole adapter & rope bag).



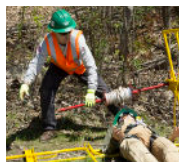
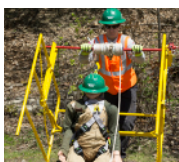
**Tethered Confined
Space Rescue Kit
105Q1-30**

INCLUDES:

- One manhole guard.
- One winch.
- One **39SAM13Q3-30** Rescue Line Kit (One 30' lifeline with ascender, breakaway assembly & rope bag).

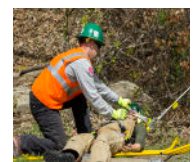
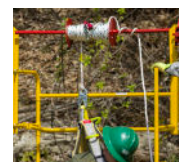
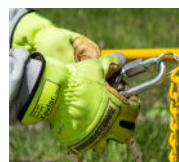
NON TETHERED RESCUE

**Non-Tethered Confined Space Rescue Kit
105Q2-30**



TETHERED RESCUE

**Tethered Confined Space Rescue Kit
105Q1-30**



WINCHES



**Personnel Winch
5000-50**

A 3 way winch with arresting, retrieval and lowering capabilities. Order model **5000K-50** for kevlar rope. **Available Lengths: 50' and 65'.**



**Personnel Winch
5010**

Personnel winch with retrieval and lowering capabilities. **Available Lengths: 50' and 65'.**



**Work Winch
5002**

A work winch with retrieval and lowering capabilities for materials only. Add K for a kevlar rope. **Available Lengths: 50', 65', and 100'.**

LIFELINE ACCESSORIES



**Leg Extension Levelers
84640LE12**

A set of 4 leg extension levelers that each measure a foot in length. The extension legs will allow the user to level the gate if working on uneven ground. The legs also feature 4 adjustment holes for height management. These leg extension levelers are for use with our **105Q1, 105Q2 and 105Q3** Confined Space Rescue Kits.



**Tripod Bag
50037BY**

A tripod bag made of heavy duty yellow coated nylon. Strong nylon handles surround the bag for added carrying strength and snap closures along the entire length. Fits a 7' tripod. Available in orange coated nylon, **50037O1**. Measures 56" L x 22" W.



**Tripod for
Confined
Space
Retrieval
System
5003**

When entering a confined space, a worker must be attached to an independent lifeline for adequate fall protection and retrieval. Buckingham's retrieval systems exceed all

A COMPLETE RETRIEVAL SYSTEM SHOULD INCLUDE:

- A man rated winch to be attached to personnel at all times during the descent and work below grade
- Tripod (**5003**)
- **5007B1** for use with Kevlar winch
- **5007** for use with galvanized winch

current OSHA and ANSI requirements. Read and follow the users manual enclosed with every system.

- Full Body Harnesses (See Harness Section)
- Work Winch to raise and lower materials only (**5000**) (**5010**)
-

Tripod, man rated winch and work winch are purchased separately



Made in the USA



WARNING: Cancer and Reproductive Harm For All Products on Page – www.P65Warnings.ca.gov

03 OX & ACCESSORIES



OX BLOCK™ w/Swivel Eye
(patented)

50061
50061Q1 (CSA)



OX BLOCK™ w/Clevis Top
(patented)

50062
50062Q1 (CSA)



OX BLOCK™ Clevis Top
w/Buck Pin

*Removable pin for easy
configuration change-outs!*
50063



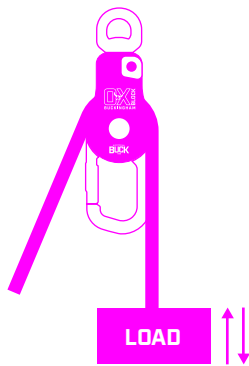
CONFIGURATIONS

FOR THE OX BLOCK™

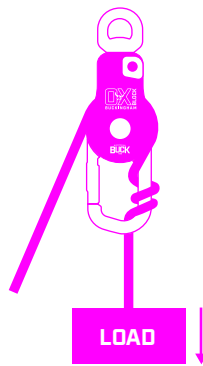
When configured with optional pulleys, the patented OX BLOCK™ can be used to create a 2:1, 4:1 or 6:1 mechanical advantage reducing the amount of force needed to lift heavy loads. The benefit of the pulleys is that the swivel side plate allows for quick and easy rope installation without removing the pulley from the connecting device.

OX BLOCK™ Configurations

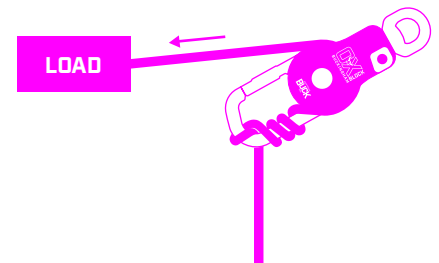
1. COMMON CONFIGURATION



2. HURTMAN RESCUE & LOWERING LOAD W/ FRICTION

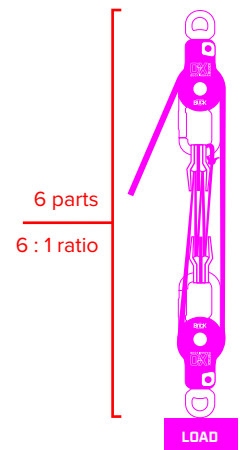
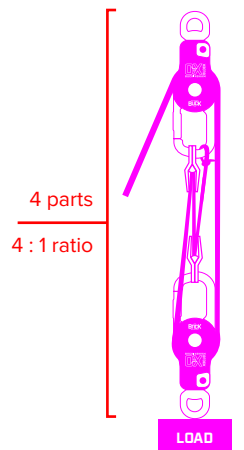
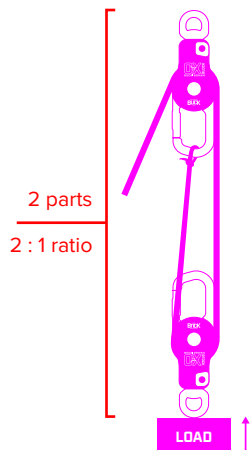


3. SNUBBING LOAD



3 wraps, 1 half hitch minimum

4. RAISING LOAD



WATCH THE VIDEO:

Watch the video at
[BuckinghamMFG.com/
videos](http://BuckinghamMFG.com/videos)



Made in the USA



WARNING: Cancer and Reproductive Harm For All Products on Page – www.P65Warnings.ca.gov

04 EQUIPMENT BAGS/BUCKETS/ STORAGE

BUCK BIG MOUTH BAG

NEW



Buck Big Mouth Bag
15½" Opening

Standard Bag
10" Opening

The Buck Big Mouth Bag is a new and improved equipment bag with an extended wide mouth to make it easier and faster for workers to store all of their PPE, gear, tools, and other items in their bag with ease. *No more struggling to get your essentials into your bag and no more fighting to get it closed.*



**Buck Big Mouth Bag
(Safety Green)**
47333G9R5S



**Buck Big Mouth Bag
(Black)**
47333B3R5S

Measures:
22"L x 15.5"W x 19"H



**Buck Big Mouth Bag
w/Wheels (BuckViz™ Green)**
47333G9R5SW3

**Buck Big Mouth Bag
w/Wheels**
47333B3R5SW3

The same extended wide mouth as our regular Buck Big Mouth™ Bag but with the added features of Buckingham's new wheel design, which adds an additional two wheels and places the wheels farther apart. This product improvement was based on feedback from the field and makes the bag more stable and gives it a smoother ride when using the wheel function. This Buck equipment bag also features:

- A heavy vinyl coated nylon construction.
- 2" molded rubber lip that prevents water from seeping into the bottom of the bag.
- Durable for all types of weather conditions.
- Adjustable shoulder strap with pad for comfort.
- Two side pockets with one featuring elastic tool holders for organization.
- Top grain reinforced leather straps that are double riveted.
- Industrial weight nickel plated snaps on pockets.
- Heavy duty nylon web handles sewn around the bag for accessible carrying.
- Measures 24" L x 19" H.



BUCKPACK™ EQUIPMENT BACKPACK

The BuckPack™ Equipment Backpack is large enough to carry all the equipment of a traditional tool bag. With a hard plastic bottom. All pockets have hook and loop closures. Features padded shoulder straps with adjustable chest strap. Zipped raw flap is designed to keep water out of bag. Carry handles at top of bag.



Available with Wheels
and Pull Handle Model
4470G9W1



**Small BuckPack™
Equipment Backpack**
4470G9

**Front Pocket
Measures:**
12"L x 12"W

**Side Pocket
Measures:**
10"L x 6"W

 **ORANGE:**
4470O1

 **BLACK:**
4470B3



**BIG BuckPack™
Equipment Backpack**
4471B3

**Front Pocket
Measures:**
14"L x 15.5"W

**Side Pocket
Measures:**
20"L x 7"W

 **ORANGE:**
4471O1

 **SAFETY GREEN:**
4471G9

BUCK HAUL BAG

The Buck Haul Bag is constructed of 44 oz. Vinyl and is designed for the Arborist, Tower Worker, or Rope Technician. Made of MOLLE webbing on the exterior and interior of the bag provides organization. Features metal buckles and snaps that will far out last plastic components and an ergonomic back pad that is easily removed for travel or storage. Climbing spec webbing used to reinforce all seams and wear points with an inside mesh pocket for extra storage. Large drawstring opening/closing system for optimal fit of stored gear.



Buck XL Haul Bag
4370B14

Fits 200' of 1/2" rope.

Measures: 13" Dia. x 27" H



Buck Haul Bag

 **BuckViz™ Green**
4371G9

 **Black**
4371B14

ROPEPRO™ DELUXE BAG

**Large RopePro™
Deluxe**
4374

Holds up to 250' of
1/2" rope.

**XL RopePro™
Deluxe**
4374

Holds up to 500' of
1/2" rope.



The RopePro™ Deluxe Bag by Buckingham International is water resistant that helps keep equipment dry with a rope access port located in the lid with a cap to keep dirt and water out. Ventilation panels provide air circulation and quick glance identification of material.

- Webbing gaps/molly loops for tool holsters; web loops for extra carabiners.
- 7 exterior pockets.
- Great for helmet and saddle storage as well.
- Optional shoulder and chest strap attachments made specifically for the RopePro™ are also available by using PN 4375.



Made in the USA



WARNING: Cancer and Reproductive Harm For All Products on Page – www.P65Warnings.ca.gov


BAGS WITH
WHEELS



BIG BuckPack™
Equipment Backpack w/Wheels

Features Buckingham's new wheel design, which adds an additional two wheels and places the wheels farther apart. This product improvement was based on feedback from the field and makes the bag more stable and gives it a smoother ride when using the wheel function. Bag features:

- A durable molded plastic bottom.
- Constructed with heavy duty vinyl coated nylon for long lasting durability.
- A hook and loop closure secures contents inside while a zippered rain flap keeps water out of the bag.
- Padded shoulder straps provide comfort.
- Comes with a padded adjustable chest strap.
- Heavy duty wheels and a pull handle to use as a drag bag.
- Can also be carried by the handles at the top of the bag.
- Measures:: 24"H x 22"W


 **Black**
4471B3W1

 **BuckViz™ Green**
4471G9W1

 **Orange:**
4471O1W1

Available in Smaller Size
(22"H x 15"W):

 **BuckViz™ Green:**
4470G9W1

 **Black**
4470B3W1



Equipment Bag
4533G4R5SW1

Features Buckingham's new wheel design, which adds an additional two wheels and places the wheels farther apart. This product improvement was based on feedback from the field and makes the bag more stable and gives it a smoother ride when using the wheel function. This Buck equipment bag also features:

- New nylon side handle
- Constructed of a durable Cordura nylon.
- 1/4" double tempered Masonite bottom for durability in all weather conditions.
- 2" molded rubber lip that prevents water from seeping into the bottom of the bag.
- Durable for all types of weather conditions.
- Adjustable shoulder strap with pad for comfort.
- Two large side pockets.
- Top grain reinforced leather straps that are double riveted.
- Industrial weight nickel plated snaps on pockets.
- Heavy duty nylon web handles sewn around the bag.

 **Black**
4533B4R5SW1

CANVAS
CAMO BAGS
W/WHEELS

Measures::
24"L X 11"W X 19"H

Features 6" heavy duty rubber wheels and retractable handle. Ideal for transporting equipment in rough terrain. New nylon side handle. Constructed of a durable Cordura nylon. 1/4" double tempered Masonite bottom for durability in all weather conditions. 2" molded rubber lip that prevents water from seeping into the bottom of the bag. New heavy duty wheels make this ideal for toting in rough terrain.



Digital Camo Canvas Bag
41333C7R5W3



Camo Canvas Bag
41333C9R5W3





**Equipment Bag
w/Rain Flap
45331G9R5**

Measures: 15"H x 7" W x 24" L

New features include a molded rubber lip that prevents water from getting in the bottom, rubber bottom also gives you extended durability in all-weather condition, and a rain-flap to prevent water from seeping in through the top.

- Constructed of heavy duty vinyl coated nylon.
- 1/4" double tempered Masonite bottom for durability in all weather conditions.
- 2" molded rubber lip that prevents water from seeping in through the top.
- A large separate inside pocket.
- Top grain reinforced leather straps that are double riveted.
- Industrial weight nickel plated snaps on pockets.
- Heavy duty nylon web handles sewn around the bag for accessible carrying.



**Utility Bag
45400G4-18**

An 18" utility bag made from water resistant nylon that fits all the necessities in one space when in the field. Features a nylon zipper closure that won't corrode or bind and large zipper opening that allows easy access and stowage of larger tools/equipment.



**Tool Bag
45300C**

A heavy duty canvas tool bag with one inside pocket for small parts. Leather handles and straps. Measures: 15" H x 7" W x 20" L. For large 24" (Measures: 15"H x 7" W x 24" L) version order model **45300C-24**.



**Utility Bag
45521**

A utility bag that features web handles with 1 outside and inside pocket. Leather strap closure on bag and pockets for shoulder strap add suffix S. Measures 13" H x 11" W x 22" L.



**Salvage Bag
45299**

A heavy canvas utility bag with a reinforced bottom for wear ability and double carry handles for added strength. Measures 17" L x 15" H x 8" W.



**Buck Fall Protection
Storage Bag
45600**

This heavy-duty canvas bag was designed to store your full body harness and energy absorbing lanyard. The bag also features an area to write your name for easy identification along with the text "Fall Protection Equipment." Measures 8" L x 5" W x 20" H



**Buck Mini
Equipment Bag
506G4P7-14**

Buck's mini equipment/tool bags now featured in high-vis and digital camo colors fit all your smaller equipment and tools with ease.

- Constructed of a heavy Cordura nylon for maximum durability
- Heavy duty zipper closure
- Strong 1" nylon web carry handles
- 2 outside pockets for extra storage with heavy duty closure snaps



**Buck Mini
Equipment Bag
(Digital Camo)
506C9P7-14**



Made in the USA



WARNING: Cancer and Reproductive Harm For All Products on Page – www.P65Warnings.ca.gov

CANVAS
BUCKET**NEW**

Want to add
your company
logo to a bucket?
Contact Sales@
BuckinghamMFG.
com to learn
more.

**Canvas Bucket
1215G9**

A vinyl coated nylon bucket with a solid continuous PVC ring in the top and a molded rubber bottom. Bottom is made from high impact thermoplastic rubber for long lasting durability under the toughest working conditions. Polyester rope and swivel snap allows the tool bucket to be suspended.

**Bucket w/Drawstring Top
1215T3**

A canvas bucket made with heavy canvas construction and a molded rubber bottom with a solid continuous PVC ring in top and a polypropylene rope with 4958 brass swivel snap. Features an 8" x 8" inside pocket. Measures: 12" Dia. x 15" H.

**Heavy Duty Canvas
Recycling Bucket
1215Q22**

This bucket model is intended for recycling purposes! A canvas bucket made with heavy canvas construction with a solid continuous PVC ring on top and has a molded rubber bottom. A polypropylene rope with 4958 brass swivel snap for attachment purposes. It does not have an inside pocket. Measures: 15"H x 12.5"W x 14.5"Dia.

- Will not rot use in the sun and rain.
- Spliced for added durability.
- Top ring is continuous solid PVC material, stronger than typical PVC rod.
- The bottom of bucket is made from high impact thermoplastic rubber for long-lasting durability under the toughest working conditions.
- Reinforced rope support holes to prevent wear on canvas.
- Heavy-duty Nylon thread that will not rot or fall apart.
- Unique heavy canvas construction that is folded over outside stitches to protect the thread from abrasion.

OVAL
BUCKET

All of Buckingham's Oval tool Buckets are made from high impact thermoplastic rubber with drain holes. Features molded top rings. Heavy durable thread that will not rot. Heavy Canvas Construction that is folded over outside stitches to protect thread from abrasion and then stitched again on outside for added strength. *For even more accessibility add Buckingham's retro kit M2-3 or M2-8 magnet strips for easy access to things like nuts and bolts.*

MAGNETIC STRIP**Oval Bucket
121615CH1L**

The **121615CH1L** canvas bucket made of heavy canvas with a hard exterior canvas body that has molded top rings and nylon web handles. Features 14 outside tool pockets and 15 inside pockets. Bucket hooks are not included.

**Oval Bucket
12162**

The 12162 heavy canvas bucket features 15 inside tool pockets and 2 polypropylene ropes connected to a heavy snap for suspension.

**Oval Bucket
1216241**

A heavy duty canvas bucket with a molded top ring and manila suspension rope with brass swivel snap and a molded bottom with drain holes. Features 26 inside and 15 outside pockets. Measures 13"L x 6 1/2"W x 10"H.

**Oval Bucket
121656L**

A heavy duty canvas bucket with 15 outside tool pockets and a molded bottom with drain holes. Features a large grommet hole and a molded top ring and 2 PVC hooks. Measures 14"L x 6 1/2"W x 10"H.



06 TOOLS/ HARDWARE

All gates rated to 3600 lbs/Meets ANSI Z359.12 Requirements

DOUBLE ACTION GATES



**Steel Carabiner
5005T**
Length: 4.38" (111.3mm),
Opening: .94 (24mm),
Breaking Strength:
9,218 lbs. (41kN)



**Steel Carabiner
5005L1**
Length: 7 5/8" (193.68mm),
Opening: 2 1/8" (53.98mm),
Breaking Strength:
8,992 lbs. (40kN)



**Aluminum Carabiner
5555S2**
Length: 4.80" (122mm),
Opening: .78" (20mm),
Breaking Strength:
6,744 lbs. (30kN)

TRIPLE ACTION GATES



**Aluminum Carabiner
5555S3**
Length: 4 7/8" (123.83mm),
Opening: 3/4" (19.05mm),
Breaking Strength:
6,744 lbs. (30kN)



**Aluminum Carabiner
5555S4**
Gate Opening: .63" (16mm)
Length: 5 5/8" (142.87mm)
Breaking Strength:
6,744 lbs. (30kN)



**Steel Carabiner
5005I**
Length: 4.88" (124mm),
Opening: .94" (24mm),
Breaking Strength:
9,218 lbs. (41kN)



**Steel Carabiner
5005S3**
Length: 4.68" (119mm),
Opening: .94" (24mm),
Breaking Strength:
11,240 lbs (50kN)



**Aluminum Carabiner w/Eye
5005SAE**
Length: 5 1/4" (133mm),
Opening: .71" (18mm),
Breaking Strength:
5,732 lbs. (25.5kN)



**Big BuckSnap™ Locking
Snap Hook
30342**
Gate Opening: 4" (85mm)
Eye Opening (ID): 1 5/16" (24mm)
Length: 13" (330mm)
Rated to 5,000 lbs.
Gate rated to 3,600 lbs.



**Locking Ladder
Snap
30351**
Gate Opening: 2 1/2" (64mm)
Eye Opening (ID): 1" (25mm)
Length: 9 1/2" (241mm)
Rated to 5,000 lbs.
Gate rated to 3,600 lbs.



**Aluminum Locking
Ladder Snap
1720**
Gate Opening: 2 1/2" (64mm)
Eye Opening (ID): 1 3/16" (30mm)
Length: 10" (254mm)
Rated to 5,000 lbs.
Gate rated to 3,600 lbs.



**Large Locking
Ladder Snap
31301**
Gate Opening: 2 1/2" (64mm)
Eye Opening (ID): 1.06" (27mm)
Length: 9.6" (244mm)
Rated to 5,000 lbs.
Gate rated to 3,600 lbs.



**Steel Alloy
Roto Snap
1711**
Gate Opening: .80" (20.03mm)
Eye Opening (ID): .87" (22.2mm)
Length: 5.19" (131.8mm)
Rated to 10,000 lbs.
Gate rated to 5,000 lbs.



**Steel Locking
Snap Hook
1706**
Gate Opening: 1 5/16"
Eye Opening: 1" (25mm)
Length: 6" (152mm)
Breaking Strength: 5,000 lbf.
Gate rated to 3,600 lbs.



Made in the USA



BUCKINGHAM SKINNING KNIVES

Buckingham's wide selection of skinning knives are well known for their strong, durable and long lasting blades. The blade stay sharp, and when sharpening is needed the honing stone can put a sharp edge on the blades edge with ease.



Buckingham BuckViz™ ErgoBlade™ Skinning Knife 7091G

The round handle allows the user to create the proper cutting angle by rotating the knife within the hand instead of constantly and repetitively turning the wrist. OAL: 9 5/8".

For version with notch in blade, order model **70913G**



Buckingham ErgoBlade™ Skinning Knife 7091

The round handle allows the user to create the proper cutting angle by rotating the knife within the hand instead of constantly and repetitively turning the wrist. OAL: 9 5/8".

For version with notch in blade, order model **70913**



Buckingham Cushioned Handle Skinning Knife 7090

Hand formed designed handle fits comfortably in the users hand. OAL: 9 1/2".

For version with notch in blade, order model **70903**



Buckingham Rubber Grip Knife 7088

Hand formed designed handle fits comfortably in the users hand. OAL: 6"

GOAT WRENCH

Made from alloy steel to withstand hard usage. The jaws are designed so that a nut, bolt or pipe is drawn further into the throat as pressure is applied.



Goat Wrench 7071

Specifications Include:

- Handle Length: 8 1/2"
- Overall Length: 11 3/4"



BUCKSKINNER™



BuckSkinner™
7095

The BuckSkinner™ is an ergonomically designed dual handle skinning knife constructed to quickly, easily, and safely strip wire with less fatigue. *Available with an accessory ring, PN 7095R*

Features Include:

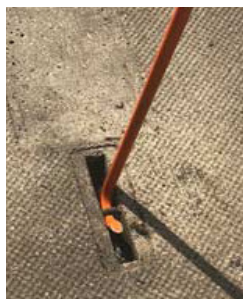
- Ideal for stripping cable/wire in any position.
- Ability to strip outer jackets on overhead or underground cables with up to 2" diameter.
- Comfortable finger grips.
- Convex edge cuts the jacket not the conductor.
- User can flip over the BuckSkinner™ and use it with one hand like a regular hook knife to do end connections.
- Finger guards prevents user lacerations.
- Sharpen it the same way you would with any other edge.



Also available is the BuckSkinner™ Guard, a leather guard with a hook and loop strap for attachment, order PN 70951.

CABLE RISER BOX HOOK

This new general purpose lifting hook is ideal for removing covers from riser boxes or underground vaults. Unlike other cable box hooks on the market with extreme bend radius, Buckingham Cable Box Hook bend radius is much less and far easier to get into cover slots.



**Cable Riser
Box Hook**
6144



Features Include:

- Constructed from 3/8" alloy steel for years of service.
- 1" diameter rubber coated handle provides the user a secure grip.
- Overall length: 30"
- Weight rating of 3,000 lbs.

MANHOLE COVER HOOK

Forged and heat-treated hook and bent at just the right angle for easy lifting of vault and manhole cover. Measures 26" and weighs 2 lbs 4 oz.



**Manhole
Cover Hook**
6142



Made in the USA



