

# BUCKINGHAM MFG.

## LOCKING SNAPHOOK INSPECTION PROCEDURE

- THOROUGHLY INSPECT EACH SNAPHOOK BEFORE EACH USE TO ENSURE:
  - > Rivets have an adequate head, are properly rolled and are not loose such that function is compromised.
  - > Snaphook is not cracked, corroded or distorted, ensure the gate (keeper) does not bind and properly seats in the bill.
  - > Keeper is not bent or distorted, ensure it properly seats in the bill.
  - > Keeper and lock mechanism are free of burrs.
  - > Keeper and lock mechanism and rivet attachment points are properly lubricated.
  - > Keeper extends into the bill, 3/16" min. (Fig. 1)
  - > Keeper and lock mechanism springs are properly seated and aligned.
  - > Roller turns freely and is not distorted.
- LUBRICATE lock mechanism and keeper on both sides AT LEAST WEEKLY or AS OFTEN AS REQUIRED to maintain smooth operation (no binding) with light weight lubricant such as BuckLube, WD-40®, Etc.

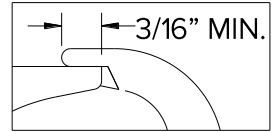


Fig. 1

- LOCKING SNAPHOOKS FEATURE A SELF-CLOSING, SELF-LOCKING MECHANISM WHICH REMAINS CLOSED UNTIL UNLOCKED AND PRESSED OPEN FOR CONNECTION OR DISCONNECTION.
  - > When the lock mechanism is not activated, the keeper should remain securely locked when depressed.
  - > Depress the lock mechanism. It should move downward easily and spring back to its original position without binding or sticking (Fig. 2).

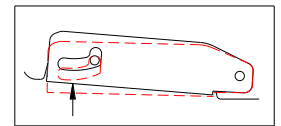


Fig. 2

- > Depress the keeper and lock mechanism simultaneously, (Fig. 3), checking for:
  - >> ease of movement — no binding
  - >> keeper unlocks completely
  - >> keeper opens completely, moves through its full range of motion smoothly, and returns to its original position within the bill.

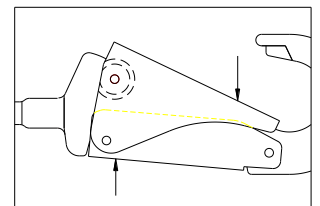


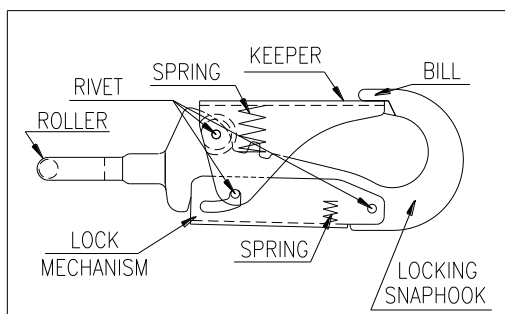
Fig. 3

- > Move the keeper side to side to check for excessive side movement (Fig. 4). Side movement is excessive if the keeper hangs up on the tab of the split bill (Fig. 5)

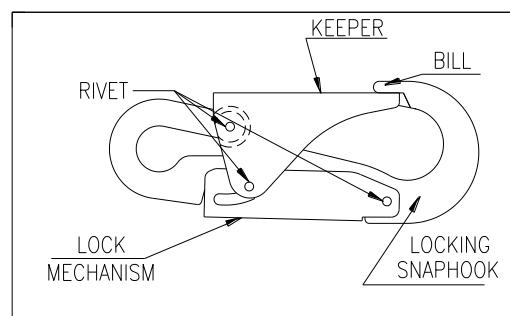


Excessive keeper side movement.  
Keeper hangs up on tab of the split bill

- **NOTE:** MISUSE / ABUSE OF THIS PRODUCT COULD LEAD TO IMPROPER FUNCTIONING WITH RISK OF INJURY!!! NEVER ATTEMPT TO ALTER OR MODIFY A SNAPHOOK TO BYPASS THE LOCK MECHANISM!!!



LOCKING POSITIONING STRAP SNAPHOOK



LOCKING SNAPHOOK (LINKLESS CONNECTION)

## STATEMENT of OBSOLESCENCE:

Precise “useful life expectancy” or “shelf life” for this product is not specified, as the degree of use, conditions of use, and the degree of care and storage determines useful life. All users maintain responsibility to select proper equipment for the job, be properly trained in its use, and ensure all personnel support equipment passes inspection before each use. Upon evidence of defects, damage or deterioration, all equipment shall be removed from service immediately and tagged or marked as unusable or destroyed. Additionally, all equipment shall be inspected on a regular basis not to exceed one year by a Competent Person, as defined by OSHA/ANSI, to verify that the equipment is safe for use. In the event of any question or concern regarding the condition of such equipment, users shall remove the equipment from service for further inspection. All users must comply with OSHA/ANSI/ASTM standards prior to and in using such equipment. For more information regarding safe and appropriate use of equipment, please contact Buckingham Manufacturing at 1-800-937-2825.

## INTERNATIONAL USERS:

Notwithstanding the above, please know that certain international jurisdictions require manufacturers of equipment to provide customers with a maximum useful lifespan (sometimes referred to as a “Statement of Obsolescence”). To the extent required, Buckingham personal protective equipment manufactured from synthetic fiber materials including but not limited to items such as webbing and/or rope are subject to a maximum useful lifespan of ten (10) years from the date of manufacture. As stated above proper usage, storage, maintenance, and care impacts the useful lifespan of equipment. Extreme circumstances may require that product must be retired after only one use. This statement is made in conformance and compliance with BS EN 365:2004. International users must ensure that product inspections are completed by Competent Persons as defined by international standards including but not limited to British Standard (“BS”). If equipment fails any inspections, it must be immediately withdrawn from service and destroyed. For more information regarding safe and appropriate use of equipment, please contact Buckingham Manufacturing at 1-800-937-2825.

## OUR GUARANTEE:

We guarantee the equipment we manufacture to be free from defects in material and workmanship. We will repair any equipment deemed to be defective which is returned to us by the original purchaser. However, this guarantee is void if any product is changed or altered in any way, or if the product is used in a manner other than for which it is intended. This express guarantee supersedes all other expressed or implied guarantees, obligations or liabilities. THERE ARE NO IMPLIED WARRANTIES OF MERCHANTABILITY OR FITNESS FOR A PARTICULAR PURPOSE AND AS SUCH, ALL IMPLIED WARRANTIES ARE SPECIFICALLY DISCLAIMED.

## LIMITATION ON LIABILITY:

IN NO EVENT WILL BUCKINGHAM OR BUYER BE LIABLE TO THE OTHER FOR LOST REVENUES, LOST PROFITS OR ANY OTHER INDIRECT, CONSEQUENTIAL, SPECIAL OR PUNITIVE LOSSES OR DAMAGES, HOWEVER CAUSED, WHETHER IN ACTION FOR BREACH OF CONTRACT, STRICT LIABILITY, TORT, OR OTHERWISE, EVEN IF ADVISED OF THE POSSIBILITY OF SUCH LOSSES OR DAMAGES. IN NO EVENT WILL BUCKINGHAM'S LIABILITY EXCEED THE TOTAL AMOUNT PAID BY BUYER TO BUCKINGHAM FOR THE PRODUCT OR EQUIPMENT GIVING RISE TO SUCH CLAIM(S).

PLEASE SEE OTHER TERMS AND CONDITIONS RELATING TO THIS PRODUCT AT <https://buckinghammfg.com/terms-conditions/>

## REGISTRATION:

Before use of the product, ensure to register and confirm the product at [www.buckinghammfg.com/register](http://www.buckinghammfg.com/register).

**BUCKINGHAM MFG.**  
BINGHAMTON, NY  
1-800-937-2825