

MODEL 68K966K6 BUCKTECH™ TOWER HARNESS SIZING PROCEDURE

Height	Chest Size					
	34 - 36	38 - 40	42 - 44	46 - 48	50 - 54	56 - 60
5'4" - 5'7"	S	S	M	L	X	XX
5'8" - 5'11"	S	M	L	X	XX	XXX
6'0" - 6'3"	M	M	L	X	XX	XXX
6'3" +	L	L	X	X	XX	XXX

1S = Extra Small
S = Small
M = Medium
L = Large
X = Extra Large
2X = XX Large
3X = XXX Large

A. Using a seamstress tape or tape measure, measure users height and chest size. Chest size is measured around chest and back directly under the armpits across the breast.

B. Using the Body Belt Sizing chart on the right, determine the correct D-size for the user.

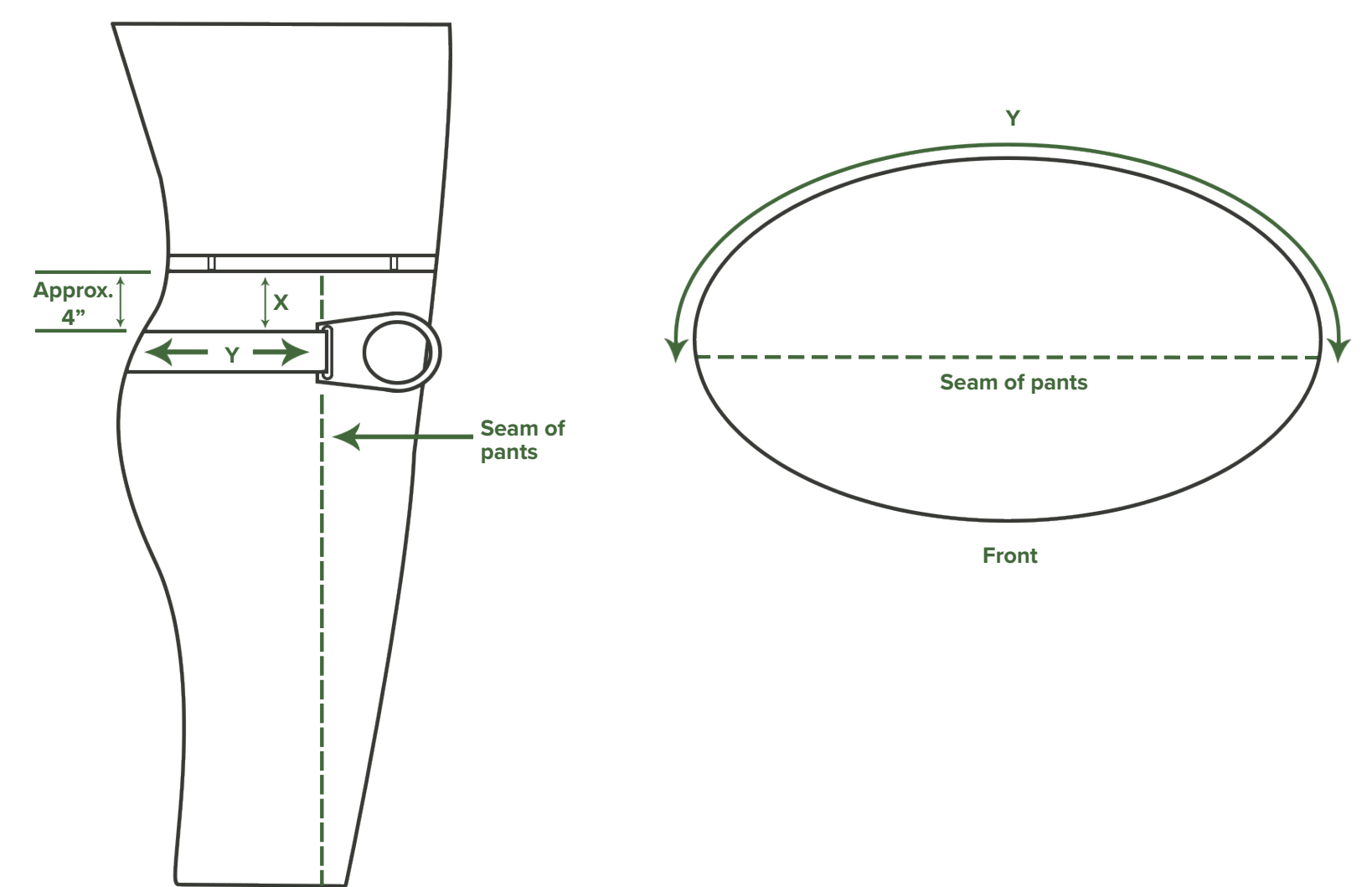
- Determine your 'Y' measurement (see method and diagram on the right).
- Find your 'Y' measurement, then move across the row to the column that has your waist size. (ex.: Your 'Y' measurement is 24" and you want a medium Tower Harness Body Belt).

C. Record desired part number & size based on information obtained above. Example; user is 5'10" with a 40" chest and a 24" D-Ring size, they would order 68K966K6-M.

Tape Measurement / Sizing Belt Measurement	Y Measurement	D-Ring Size	Waist Size
	17	19	1S
	18	20	1S
	19	21	1S
	19	21	S
	20	22	S
	21	23	S
	21	23	M
	22	24	M
	23	25	M
	23	25	L
	24	26	L
	25	27	L
	25	27	X
	26	27	X
27	29	X	
27	29	2X	
28	30	2X	
29	31	2X	
29	31	3X	
30	32	3X	
31	33	3X	

Green Numbers = Standard Sizes
Red Numbers = Non Standard Sizes

X - Distance from waist to top of hip bone where body belt is typically worn.
Y - Measurement is from front of hip bone, around the back and to the front of the other hip bone (Typically from seam to seam of pants).

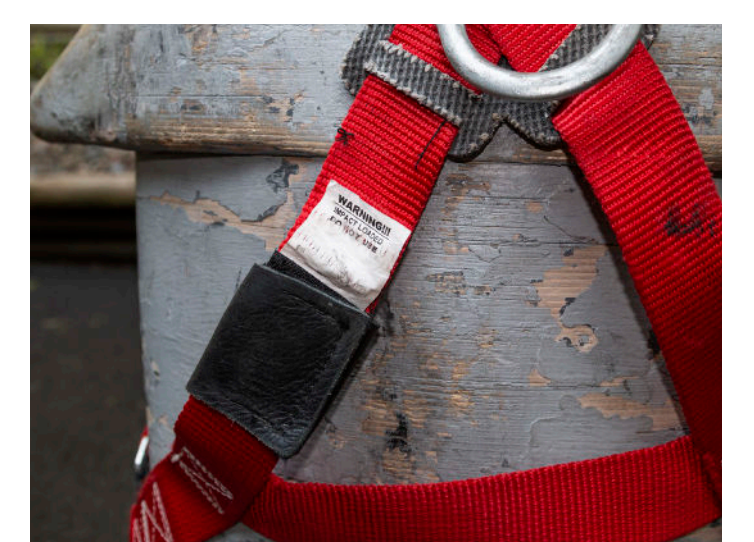


Note: To ensure proper body belt sizing, always take your Dee (Y) measurement using a tape or sizing belt. Never rely on you current body belt Dee size.

FULL BODY HARNESS INSPECTION
BEFORE EACH USE, IT IS IMPORTANT TO CHECK FOR THE FOLLOWING:

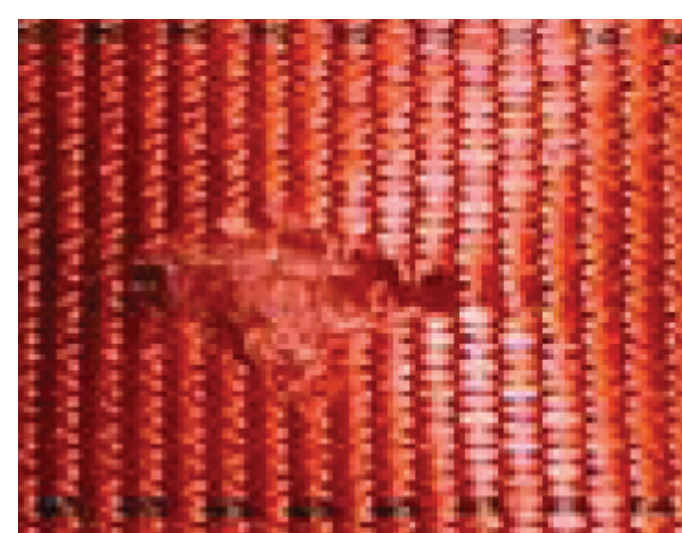
WEBBING

- Cuts
- Burns or charring
- Cracks
- Evidence of shock load to harness
- Kinks
- Broken fibers
- Excessive wear
- Abrasions
- Swelling
- Discoloration
- Chemical/Physical exposure
- Loose, cut or missing stitching
- Chest strap Hook & Loop have sufficient adhesion
- UV degradation

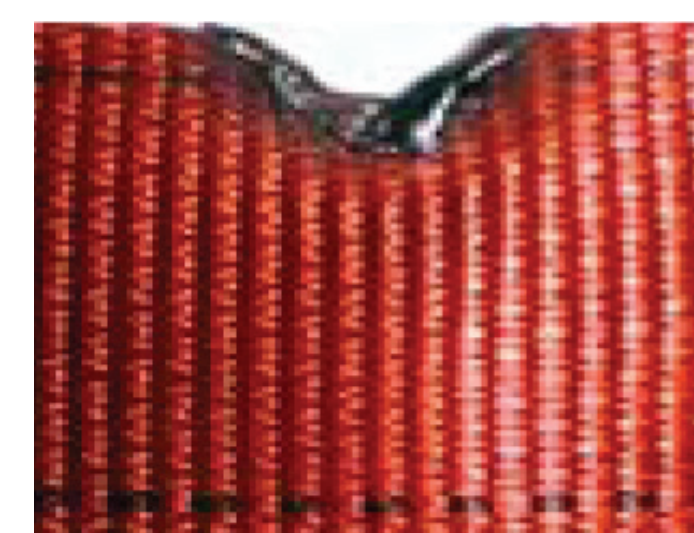


HARDWARE

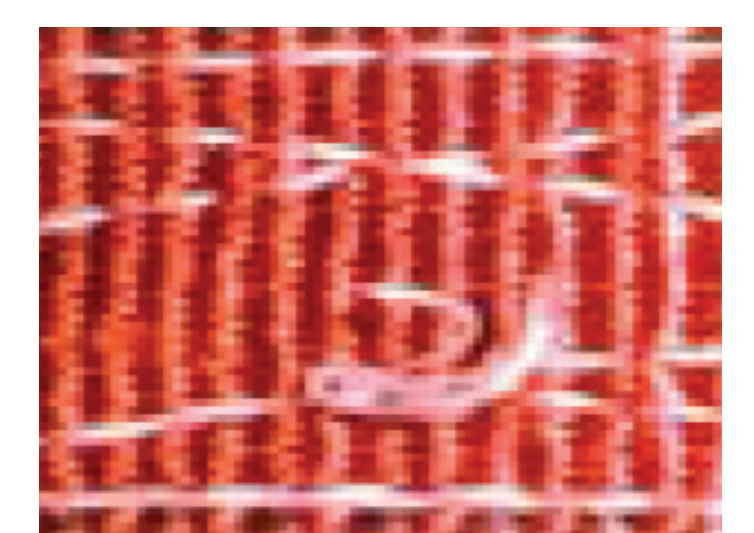
- Cracks or nicks
- Quick connect buckles operate properly
- Distorted/Bent
- Moderate to server rust or corrosion



Cuts



Burns



Stitching



Chemical



Broken



Severe Rust/Corrosion

IF ANY OF THESE CONDITIONS EXIST CEASE USE IMMEDIATELY!