

<b>Universe</b>	Professional
<b>Type</b>	Verticality
<b>Category</b>	Connectors
<b>Subcategory</b>	High strength carabiners

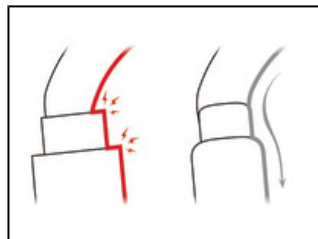


## Bm'D

The Bm'D lightweight asymmetrical carabiner is made of aluminum. It has a D shape particularly suited for connection to diverse equipment such as descenders or positioning lanyards. Its fluid interior design and Keylock system facilitate handling. The Bm'D carabiner has the TRIACT-LOCK automatic locking system. The sleeve is reinforced for greater front and lateral gate strength. Bm'D may be used with a CAPTIV positioning bar to favor loading of the carabiner along the major axis, to limit the risk of it flipping and to keep it integrated with the device.



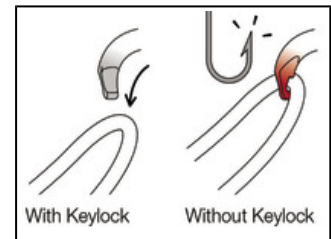
The sleeve is reinforced for greater front and lateral gate strength.



Fluid interior design of Bm'D carabiners limits the risk of having a catch point and facilitates rotation of the carabiner.



The Bm'D has an H-shaped cross-section that ensures an optimal strength/weight ratio and protects the markings from abrasion.



To ensure optimal efficiency, Bm'D carabiners use the Keylock system: the body/gate interface does not have a hook that could snag on anchors, ropes, harness equipment loops...

---

**Short Description** Lightweight asymmetrical high-strength carabiner

---

**Selling Points**

- D shape is particularly suited for connection to equipment such as descenders or positioning lanyards
- Aluminum carabiner is light, reducing the weight of equipment the worker at height needs to carry
- Sleeve is reinforced for greater front and lateral gate strength
- May be used with a CAPTIV positioning bar to favor loading of the carabiner along the major axis, to limit the risk of it flipping and to keep it integrated with the device
- Easier handling:
  - fluid interior design limits the risk of having a catch point and facilitates rotation of the carabiner
  - Keylock system to avoid any involuntary snagging of the carabiner
- H-shaped cross-section:
  - ensures an improved strength-to-weight ratio
  - protects markings from abrasion
- TRIACT-LOCK automatic locking system with triple-action gate opening
- Also available in black

---

**Specification**

- Material(s): aluminum
  - Certification(s): CE EN 362, EAC, ANSI Z359.12, NFPA 1983 Technical Use, CSA Z259.12
-

**Specifications by reference**

Reference(s)	M032AA00	M032AA01
		
Weight	105 g	105 g
Locking system	TRIACT-LOCK	TRIACT-LOCK
Color(s)	gray	black
Major axis strength	32 kN	32 kN
Minor axis strength	16 kN	16 kN
Open gate strength	10 kN	10 kN
Gate opening	18 mm	18 mm
Made in	IT	IT
Guarantee	3 years	3 years
Packing	1	1
Case quantity	25	25
EAN	3342540827189	3342540827165

---

**Accessory(ies)**      CAPTIV

---

**Related product(s)**      I'D S  
I'D L  
RIG  
GRILLON