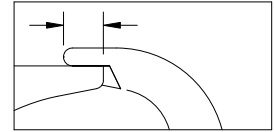


# LOCKING SNAPHOOK INSPECTION PROCEDURE

- THOROUGHLY INSPECT EACH SNAPHOOK BEFORE EACH USE TO ENSURE:
  - > Rivets have an adequate head, are properly rolled and are not loose such that function is compromised.
  - > Snaphook is not cracked, corroded or distorted, ensure the gate (keeper) does not bind and properly seats in the bill.
  - > Keeper is not bent or distorted, ensure it properly seats in the bill.
  - > Keeper and lock mechanism are free of burrs.
  - > Keeper and lock mechanism and rivet attachment points are properly lubricated.
  - > Keeper extends into the bill, 3/16" min. (Fig. 1)
  - > Keeper and lock mechanism springs are properly seated and aligned.
  - > Roller turns freely and is not distorted.

3/16" MIN.



- LUBRICATE lock mechanism and keeper on both sides AT LEAST WEEKLY or AS OFTEN AS REQUIRED to maintain smooth operation (no binding) with light weight lubricant such as WD-40®.

- LOCKING SNAPHOOKS FEATURE A SELF-CLOSING, SELF-LOCKING MECHANISM WHICH REMAINS CLOSED UNTIL UNLOCKED AND PRESSED OPEN FOR CONNECTION OR DISCONNECTION.

> When the lock mechanism is not activated, the keeper should remain securely locked when depressed.

> Depress the lock mechanism. It should move downward easily and spring back to its original position without binding or sticking (Fig. 2).

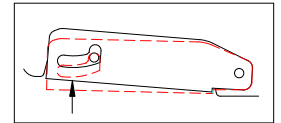


Fig. 2

> Depress the keeper and lock mechanism simultaneously, (Fig. 3), checking for:

- >> ease of movement — no binding
- >> keeper unlocks completely
- >> keeper opens completely, moves through its full range of motion smoothly, and returns to its original position within the bill.

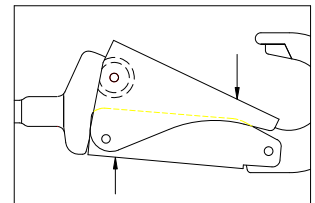
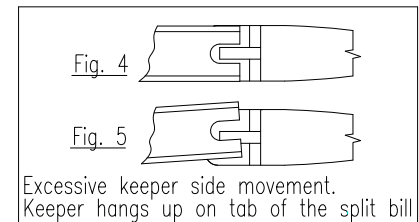


Fig. 3

> Move the keeper side to side to check for excessive side movement (Fig. 4). Side movement is excessive if the keeper hangs up on the tab of the split bill (Fig. 5)

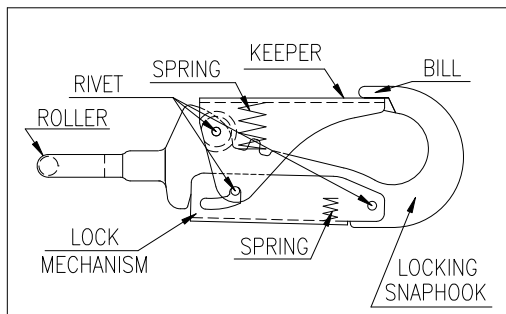
Fig. 4

Fig. 5

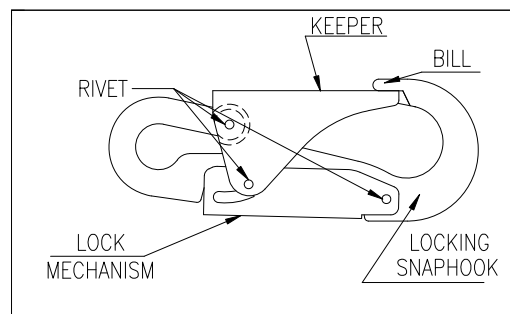


Excessive keeper side movement. Keeper hangs up on tab of the split bill

- **NOTE:** MISUSE / ABUSE OF THIS PRODUCT COULD LEAD TO IMPROPER FUNCTIONING WITH RISK OF INJURY !!! NEVER ATTEMPT TO ALTER OR MODIFY A SNAPHOOK TO BYPASS THE LOCK MECHANISM !!!



**LOCKING POSITIONING STRAP SNAPHOOK (PATENTED)**



**LOCKING SNAPHOOK (LINKLESS CONNECTION)**

BUCKINGHAM MFG. CO.  
BINGHAMTON, NY  
1-800-937-2825

Information contained in these written instructions supersedes all other information (written, audio, video etc.) produced by Buckingham Mfg. prior to the revision date of this document.